

# DP-P1

USER GUIDE



**beyonwiz**  
Invent Your Future

# Welcome Message

Thank you for choosing a beyonwiz DP-P1, the epicentre of your home entertainment network.

The DP-P1 supports all the features of a conventional digital broadcasting receiver or STB (Set-Top Box) and PVR (Personal Video Recorder). As well as the dual DVB-T digital tuners, the DP-P1 also enables you to listen to or watch multimedia content from:

- Storage devices attached to the integrated USB (Universal Serial Bus) connectors
- The integrated CF card slot
- The integrated SD/MMC/Memory Stick port
- Network devices from your PC, home network and/or the Internet

You can play almost any multimedia content from any connected storage device. With a DP-P1, you don't have to bring your PC to your living room to enjoy your PC or Internet based content on the big screen. You can be free to share your valuable time and experience with your family.

To enjoy the newest features available on your DP-P1, make sure that the latest firmware is installed. Note that with new firmware some features, which are not described in this manual, may be added and some features described in this manual may be altered or removed. These changes are usually made to give you the best performance and user experience.

Visit our website, <http://www.beyonwiz.com.au/>, to get updated information about firmware and features.

# Precaution

Read this manual carefully before using this product. The cautions described below contain important information about safety, and are categorized into: Danger, Warning and Notice. beyonwiz will not be responsible for accidents or damage resulting from careless handling by the user.



**If the user mishandles the product, there is a risk of loss of life or critical injury.**

- Connect the power cord only to A/C outlets as specified by the user manual or product specification. If the power cord is connected to a non-specified A/C outlet, it can result in fire or electric shock.
- The product must not be immersed in water or liquid of any kind. The product must not be exposed to drips or splashes. Doing so can result in a fire or electric shock.
- Do not place heavy objects, including the product itself, on top of the power cord. If the cord is damaged, it can result in fire or electric shock.
- Do not place metal objects on top of the product. If metal objects fall into the product, it could result in a fire or electric shock.
- Do not repair, disassemble or modify this product yourself. Doing so can cause a fire or electric shock. If internal checking or maintenance is needed, please contact your local beyonwiz service centre or agency.
- Do not block or cover any ventilation holes or openings. A fire can result from overheating.
- Turn off and unplug the power cord as quickly as possible during electric storms. Failure to do so can result in a fire or electric shock.
- Remove the antenna cable from the outlet as quickly as possible during electric storms. Failure to do so can result in a fire or electric shock.
- Do not drop the product (for example by putting it in a place where it may fall) or subject it to impact as the product may be damaged. If the product is damaged, turn off the power and remove the plug from the power outlet, as a fire or electric shock may occur.
- Never touch the power cord with wet hands. It can result in an electric shock.

**⚠ WARNING**

**If the product is mishandled, the user might receive a serious or minor injury. Damage or loss to the user's property may also occur.**

- The product must not be exposed to water or liquid. If the product is exposed to drips or splashes, it might cause a problem that may not be repairable.
- Do not repair, disassemble or modify this product yourself. It can be seriously damaged, possibly beyond repair.
- Turn off the power and unplug the power cord as quickly as possible during electric storms. The product may be damaged.
- Remove the antenna cable from the outlet as quickly as possible during electric storms; otherwise the product might be damaged.
- Data recorded in the HDD may be lost due to a shock, lightning or electricity failure. The user must back up his or her own data, and the company does not take any responsibility for failure to do so.

**⚠ NOTICE**

**If the product is mishandled, it might cause minor damage.**

- If the product becomes marked, clean it gently with a soft cloth or towel. Never use chemical solvents such as benzene, thinner, acetone or other solvents. The surface of the product might become discoloured and the paint might peel.
- Do not place or keep the product in the following locations. Doing so might cause problems.
  - Where it is too hot or cold.
  - Where there is high humidity.
  - Where there are excessive temperatures, for example in front of air-conditioners or heating vents.
  - Where there is dust or soot.
  - In confined areas where heat build-up cannot be dissipated.
  - Where it is exposed to direct sunlight.
- Turn the product off and unplug the power cord and remove the batteries from the remote control if the unit is to be unused for a long period of time.
- Do not place heavy objects on top of this product. It might cause a malfunction or damage.
- If the product is so seriously damaged that it cannot be repaired, or has stopped working altogether, dispose of it properly in accordance with the local laws or regulations in your area.



This symbol is intended to alert the user to the presence of un-insulated “dangerous voltage” within the product’s enclosure that may be of sufficient magnitude to constitute a risk of electric shock to persons.



This symbol is intended to alert the user to the presence of important operating and maintenance (servicing) instructions in the literature accompanying the product.

### About the internal hard disk drive

The internal hard disk drive (HDD) is a fragile piece of equipment. Please use the product within the guidelines below to protect against possible HDD failure or to protect against accidental data loss.

- Do not move the product whilst it is on.
- Install and use the product on a stable, level surface.
- Do not block the top ventilation holes.
- Do not use the product in excessively hot or humid places, or in places that may be subject to sudden changes in temperature. Sudden changes in temperature can cause condensation to form inside the product. This can be a cause of HDD failure.
- Whilst the product is switched on, do not unplug it from the wall socket or switch the electricity off at the wall switch or the circuit breaker.
- Do not move the product immediately after switching it off.
- If there is a power failure whilst the product is on, some data on the HDD might be lost.
- The HDD is very delicate. If used improperly or in an unsuitable environment, the HDD may fail after a few years of use. Signs of problems include playback unexpectedly freezing and noticeable block noise (mosaic) in the picture. Sometimes there will be no warning signs of HDD failure. If the HDD fails, no playback of recorded material will be possible. In this case the HDD needs to be replaced by a qualified technician.

***Copyright***

This manual is protected by copyright laws.

Copy, use, reproduction of this manual in part or whole without beyonwiz's prior written permission is prohibited.

***Disclaimer***

The manufacturers, distributors and agents are not liable for any kind of damage caused by the use of the information contained in this manual.

The instruction and descriptions which this manual contains are based on the time of this manual's production.

The manufacturer constantly updates it with new functions and technology.

All the specifications are subject to change without prior notice.

***Trademarks***

HDMI, the HDMI logo and High-Definition Multimedia Interface are trademarks or registered trademarks of HDMI Licensing LLC.

Manufactured under the license from Dolby Laboratories.

"Dolby" and the "double-D" symbol are trademarks of Dolby Laboratories.

The USB-IF Logos are trademarks of Universal Serial Bus Implementers Forum, Inc.

# Contents

<b>Welcome Message</b>	<b>i</b>	<b>4. Quick Setup</b>	<b>19</b>
<b>Precaution</b>	<b>ii</b>	1. Start Quick Setup	19
<b>1. Package Contents</b>	<b>3</b>	1-1. Quick Setup of Video Output Format	20
<b>2. Introduction</b>	<b>5</b>	1-2. Basic Operation	21
1. DP-P1 Highlights	5	2. Configuration	24
2. Front Panel	6	2-1. Time Setting	24
2-1. Buttons	6	2-2. A/V Output Setting	25
2-2. Slot Door	6	2-3. Service Scan	27
2-3. Front Display Window	6	2-4. LiDiC (Line-in Digital Converter – available separately)	29
3. Rear Panel	7	3. Network	30
4. Remote Control	8	3-1. Enable Ethernet	30
4-1. Operating DP-P1	8	3-2. Ethernet Setting	31
4-2. Operating TV set	9	3-3. Ice Guide	33
4-3. Remote Control HEXA Code	11	3-4. WizPNP	34
<b>3. How to Connect</b>	<b>13</b>	3-5. Windows Sharing	36
1. A/V Connection	13	<b>5. STB &amp; PVR Function</b>	<b>37</b>
1-1. Video Connection	13	1. Basic STB Function	37
1-2. Audio Connection	14	1-1. Service Change	37
2. Antenna Connection	14	1-2. Information Box	40
3. Ethernet Connection	15	1-3. Volume Level Adjust	41
3-1. Wired Connection Using a Network Router (LAN)	15	1-4. Soundtrack Change	41
3-2. Direct Connection to a PC	16	1-5. Subtitle and Teletext Service	42
3-3. Direct Connection to Internet	17	1-6. Sleep Timer	43
		2. Service Edit	44
		2-1. Service List Edit	44
		2-2. Favorite Group	45

3. PVR Functions	47
3-1. Time-shifting	47
3-2. Instant Recording	48
3-3. Timer	50
3-4. Trick Mode Operation	55
3-5. Recording Control	56
3-6. Timer Conflict	58
4. EPG (Electronic Program Guide)	60
4-1. EPG with Multiple Services	60
4-2. EPG with Single Service	61
4-3. Service Change and Recording	62
<b>6. File Playback</b>	<b>64</b>
1. Exploring Contents	64
2. Contents Playback	69
2-1. Movie Playback	69
2-2. Music Playback	74
2-3. Photo Playback	74
2-4. Playlist	75
<b>7. File Management</b>	<b>78</b>
1. Add Folder	78
2. Delete	79
3. Auto Delete	80
4. Rename	80
5. Copy / Move	81
6. Edit Recording File	84

<b>8. Internet Service</b>	<b>85</b>
<b>9. Advanced Setup</b>	<b>87</b>
1. Miscellaneous	87
1-1. Favorite	87
1-2. OSD	89
1-3. Access Control	90
1-4. PVR	92
1-5. File Player	96
1-6. Preference	97
2. Management	98
2-1. Firmware	98
2-2. HDD	100
2-3. Initialize	103
<b>10. Troubleshooting Guide</b>	<b>105</b>
<b>Specification</b>	<b>a</b>
<b>Warranty Conditions</b>	<b>b</b>
<b>WEEE Information</b>	<b>c</b>
<b>Contact beyonwiz</b>	<b>d</b>



This page intentionally left as blank.

# 1. Package Contents

The following items are included in the box.

Please check all package contents before using your product.

- DP-P1



- Remote Control



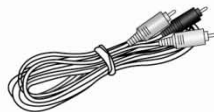
- Batteries  
(AAA size x2)



- User Manual



- RCA Audio/Video Cable



- Component (Y/Pb/Pr) Video Cable



- Ethernet Cable



This page intentionally left as blank.

## 2. Introduction

### 1. DP-P1 Highlights

As a HD (High Definition) multimedia epicentre, the DP-P1 supports various ways of connecting to HD TVs and audio systems; HDMI port combining with HD video decoders, which support MPEG-2, MPEG-4, H.264 and WMV9, give you the true HD digital A/V experience. Moreover, by supporting USB host ports and networking, the most frequently used ways of sharing contents, the DP-P1 gives unlimited flexibility to access and play multimedia content.

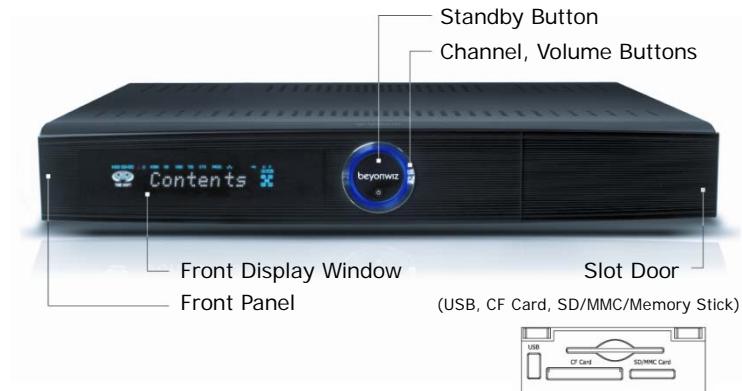
Dual Tuner	DVB-T Compliant with Internal Loop through
Video Output	Composite, S-Video, Component (Y, Pb, Pr), HDMI
Audio Output	5.1ch RCA for analog audio output Dolby Digital stereo decoding Coaxial and Optical S/PDIF Output, HDMI
Interface	10/100 Ethernet Port 2 USB Host Ports (USB 2.0 Compliant) Memory Card Slots: SD, CF, MMC and Memory Stick
Multimedia Playback	Movie: mkv, wmv, avi, mpg, vob, mp4, asf, tp, trp, ts Music: mp3, wma, aac, ac3 Photo: bmp, jpeg, png

## 2. Front Panel

### 2-1. Buttons

Five buttons are placed on the front panel.

- STANDBY Button: it switches the DP-P1 between the operation and standby modes.
- CHANNEL Buttons: the top and bottom parts of the circular button work as the channel-up and channel-down buttons.
- VOLUME Buttons: the left and right parts of the circular button work as the volume-down and volume-up buttons.



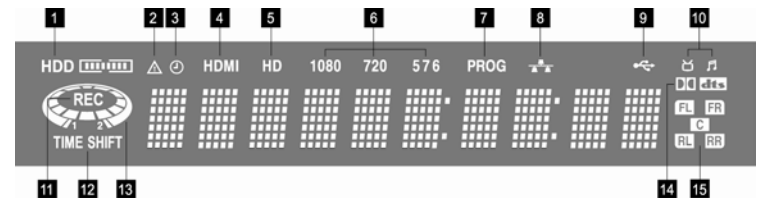
### 2-2. Slot Door

A slot door is placed on the right side of the front panel. If you open the door, you will find the following ports:

- USB: you can connect a USB storage device which is compatible with the USB standard specification.
- CF Card: you can connect a CF-type memory card.
- SD/MMC/Memory Stick: you can connect either SD-type or MMC-type memory card. You can also connect a Memory Stick.

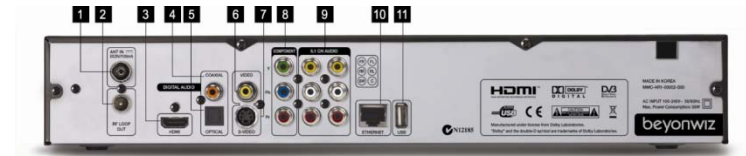
### 2-3. Front Display Window

The front display gives you an easy way to check the status of your DP-P1.



### 3. Rear Panel

1	<b>HDD</b>	Indicates hard disk space used.
2		Lights when there is no space left on the HDD. Lights when there is no time information.
3		Lights when a timer recording is programmed in standby mode.
4	<b>HDMI</b>	Lights when the signal is being output via HDMI.
5	<b>HD</b>	Lights when the signal is High Definition (will be implemented).
6	<b>1080 720 576</b>	Indicates the resolution of video output.
7	<b>PROG</b>	Lights when the video output is in Progressive Scan mode.
8		Lights when Ethernet connection is set up and enabled.
9		Lights when USB devices or memory cards are connected.
10		Indicates operation mode (TV or Radio).
11		Indicates the current recording status.
12	<b>TIME SHIFT</b>	Lights when Time Shift is enabled.
13		Indicates playback of content with light on the outer circle and revolving on the inner circle.
14	<b>DD dtc</b>	Indicates the audio format of content.
15		Lights on FR and FL when the audio output is set to stereo. Lights on all indicators when the audio output is 5.1CH. No light when the audio output is Pass-through.



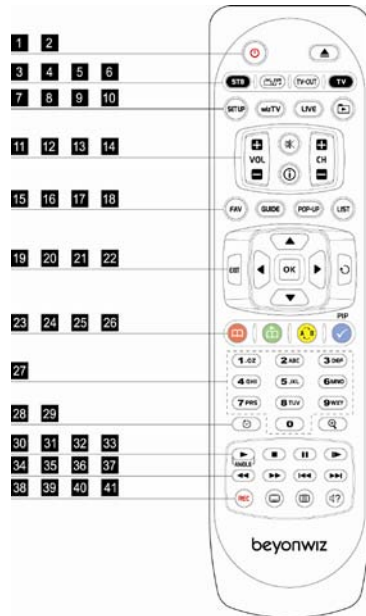
- |                  |                        |                 |
|------------------|------------------------|-----------------|
| 1. RF ANTENNA IN | 5. OPTICAL AUDIO       | 9. 5.1 CH AUDIO |
| 2. RF LOOP OUT   | 6. COMPOSITE VIDEO     | 10. ETHERNET    |
| 3. HDMI          | 7. S-VIDEO             | 11. USB         |
| 4. COXIAL AUDIO  | 8. COMPONENT (Y/Pb/Pr) |                 |

## 4. Remote Control

### 4-1. Operating DP-P1

In order to operate the DP-P1 with the enclosed remote control, please select **STB** mode by pressing the **STB** button. The red backlight beneath the **STB** button lights when you press a button in this mode.

The picture below and table on the right show the function of each button on the remote control.



1	STANDBY	Switch the DP-P1 between Operation and Standby mode.
2	N/A	Left for later use.
3	STB	Change to STB mode.
4	TV/RADIO	Select either TV or Radio while in STB mode.
5	TV-OUT	Change Video Output. (Refer to page 17 for more information)
6	TV	Control standard TVs with this remote control.
7	SETUP	Go to SETUP Menu.
8	WizTV	Go to Internet Service.
9	LIVE	Go to Live TV.
10	File PLAY	Go to File Player.
11	VOL +/-	Adjust the volume. (Increase/Decrease)
12	CH +/-	Change TV or Radio Service. (Up/down)
13	MUTE	Enable or disable the Audio output.
14	INFO	Show service information.
15	FAV	Show Favorite Service List.
16	GUIDE	Show EPG (Electronic Program Guide).
17	POP-UP	Show advanced menus of the current mode.
18	LIST	Show Service List.
19	EXIT	Return to the previous menu or Cancel.
20	UP/DOWN/LEFT/ RIGHT	Move the indicator on the menu mode.
21	OK	Select an item on the menu or Confirm.
22	RECALL	Recall the previously viewed (or listened) service.
23	RED	Optional function key, and set bookmark
24	GREEN	Optional function key, and play from the bookmarked position.
25	YELLOW	Optional function key, and A-B Repeat
26	BLUE	Optional function key
27	0-9	Numeric buttons.
28	SLEEP	Set sleep timer.
29	ZOOM	Zoom-in or Zoom-out, and change aspect ratio.
30	PLAY	Play content.
31	STOP	Stop playback.
32	PAUSE	Pause playback, pause live TV
33	SLOW FWD	Slow Forward.
34	REW	Rewind.
35	FF	Fast Forward.
36	PREV	Go to the previous track or file, and continue playing.
37	NEXT	Go to the next track or file, and continue playing.
38	REC	Start recording, and manage active recordings.
39	SUBTITLE	Change Subtitle language.
40	TELETEXT	Show Teletext.
41	SOUNDTRACK	Change Soundtrack language.

## 4-2. Operating TV set

The enclosed remote control can also be used to control a TV set provided by major TV manufacturers. In order to operate a TV with the enclosed remote control, please select **TV** mode by pressing the **TV** button. The red backlight beneath the **TV** button lights when you press a button in this mode.

There are two ways to program the remote control to work with your TV, automatic code search or manual set.

### 1) Automatic Code Search

Turn on your TV then press and hold the **TV** button until the red-backlight turns on. Point the remote control at your TV and then click the **UP** button. After the red-backlight of the **TV** button blinks, wait at least 3 seconds to check if your TV turns off or not. If your TV turns off automatically, the remote control is ready to use with your TV. If your TV does not turn off, repeat clicking the **UP** button until your TV turns off. Once your TV turns off when you click the **UP** button, press the **OK** button. The **TV** button blinks three times to indicate that the remote control is set.

### 2) Manual Set

You can set your remote control with 3-digit code manually. Check the following table and find the brand of your TV.

Turn on your TV then press and hold the **TV** button until the red-backlight turns on. Point the remote control at your TV and enter the 3-digit code with the **NUMERIC** buttons. Wait until the red-backlight blanks three times. If your TV turns off automatically, your remote control is ready to use with your TV. If your TV does not turn off, press the **TV** button and enter another code from the table under that brand.

FUJITSU	208	223	224	218	253
	261	286	307	325	329
	410	422	423		
HITACHI	206	207	208	215	218
	229	231	232	236	238
	240	244	253	256	286
	287	292	298	299	300
	301	304	305	306	307
	309	3123	314	315	316
	317	325	358	367	381
	382	383	384	399	405
	406	407	410	411	



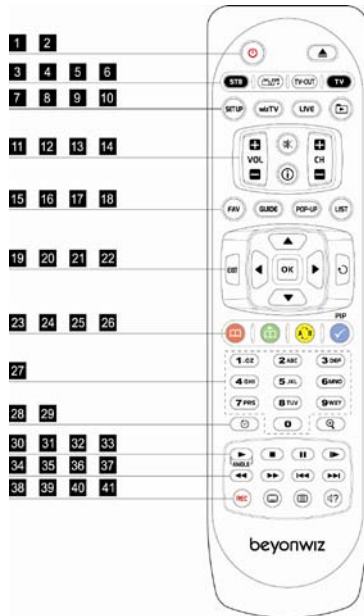
JVC	207	212	247	264	323
	385				
LG	208	215	224	229	253
	286	307	344	374	385
	387	410	412		
NEC	205	207	208	215	224
	229	248	253	286	389
PANASONIC	208	210	211	212	213
	214	216	220	230	236
	237	239	242	244	245
	255	258	260	278	279
	286	307	309	384	410
PIONEER	208	244	246	286	287
	307	374	376	380	410
SAMSUNG	205	206	208	209	215
	216	218	224	229	253
	260	270	277	286	287
	296	325	337	374	410
	412				
SHARP	207	209	230	245	384
SONY	206	207	208	225	230
	264	272	285	286	329
	424	426	430		
THOMSON	208	258	286	345	405

## NOTE

- If your TV brand is not listed in the table, visit the following website to get the correct code, if available: <http://www.beyonwiz.com.au/> .
- The remote control will not always be compatible with brands of televisions. If this remote doesn't work, or no code exists, continue to use the original remote from the manufacture of your TV.

### 4-3. Remote Control HEXA Code

The picture below and table on the right provide you with information to allow you to program your own programmable remote control to operate the DP-P1. The coding system used for the DP-P1 is the NEC type.



1	STANDBY	0xBE000AF5
2	EJECT	0xBE0040BF
3	STB	N/A
4	TV/RADIO	0xBE0055AA
5	TV-OUT	0xBE0042BD
6	TV	N/A
7	SETUP	0xBE0007F8
8	WizTV	0xBE0052AD
9	LIVE	0xBE0008F7
10	FILE PLAY	0xBE0044BB
11	VOL +/-	0xBE0002FD 0xBE0003FC
12	CH +/-	0xBE0000FF 0xBE0001FE
13	MUTE	0xBE000CF3
14	INFO	0xBE000DF2
15	FAV	0xBE0009F6
16	GUIDE	0xBE0043BC
17	POP-UP	0xBE001AE5
18	LIST	0xBE004CB3
19	EXIT	0xBE001CE3
20	UP/DOWN/ LEFT/RIGHT	0xBE004EB1 0xBE004FB0 0xBE0053AC 0xBE0054AB
21	OK	0xBE001FE0
22	RECALL	0xBE001EE1
23	RED	0xBE004DB2
24	GREEN	0xBE000DF2
25	YELLOW	0xBE000EF1
26	BLUE	0xBE000FF0
27	0/1/2/3/4/ 5/6/7/8/9	0xBE0010EF 0xBE0011EE 0xBE0012ED 0xBE0013EC 0xBE0014EB 0xBE0015EA 0xBE0016E9 0xBE0017E8 0xBE0018E7 0xBE0019E6
28	SLEEP	0xBE001BE4
29	ZOOM	0xBE0050AF
30	PLAY	0xBE004BB4
31	STOP	0xBE004AB5
32	PAUSE	0xBE0046B9
33	SLOW FWD	0xBE0006F9
34	REW	0xBE0045BA
35	FF	0xBE0048B7
36	PREV	0xBE0004FB
37	NEXT	0xBE0005FA
38	REC	0xBE005EA1
39	SUBTITLE	0xBE0047B8
40	TELETEXT	0xBE0051AE
41	SOUNDTRACK	0xBE0049B6

This page intentionally left as blank.

## 3. How to Connect

### 1. A/V Connection

Depending on the A/V equipment you own, there are various ways you can connect the DP-P1. To choose the best connection option, please refer to the manual of equipment you would like to connect to.

To get High Definition playback of High Definition content, we recommend you connect your high definition display with a HDMI cable. HDMI supports standard, enhanced or high-definition video and multi-channel audio in a single cable (HDMI cable can be purchased separately).

If your TV set does not support HDMI but has a DVI input, a HDMI to DVI converter can be purchased separately (in this case, audio signal output through the HDMI interface is disabled). If you do not have a high definition display, you can connect the DP-P1 and A/V equipment via other connection options.

#### NOTE

- High Definition playback is only possible through HDMI or components connections.

### 1-1. Video Connection

To connect your DP-P1 to your TV or display, the following options are available (in order from highest to lowest quality);

- HDMI (high definition compatible)
- Component (Y/Pb/Pr) (high definition compatible)
- S-VIDEO
- Composite

#### NOTE

- Only one video connection will be active at a time.
- All cables can be purchased separately.



## 1-2. Audio Connection

To connect your DP-P1 to your TV or audio system, the following options are available;

- S/PDIF digital audio output (COAXIAL or OPTICAL)
- 5.1 CH analogue audio output
- Stereo analogue audio output (use the 5.1 CH connectors labeled FL & FR only)



## 2. Antenna Connection

Connect your TV Antenna to the DP-P1 as follows;

- Antenna In (connecting to the roof Antenna)
- RF LOOP OUT (only for bypassing the signal to another device)



### NOTE

The DP-P1's two tuners are connected internally, so only one antenna cable is required.

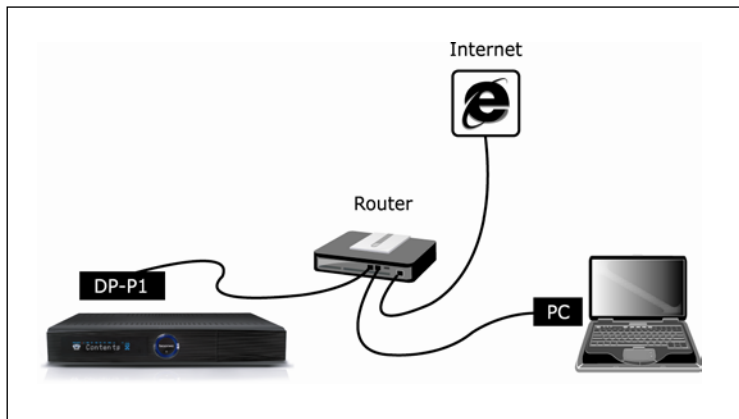
### 3. Ethernet Connection

#### 3-1. Wired Connection Using a Network Router (LAN)

In order to fully utilize the DP-P1, it is strongly recommended that you connect the DP-P1 to your home network via a network router.

For this connection, the following equipment is required;

- A router either with a built-in network switch or an external switch.
- An Ethernet cable (provided).

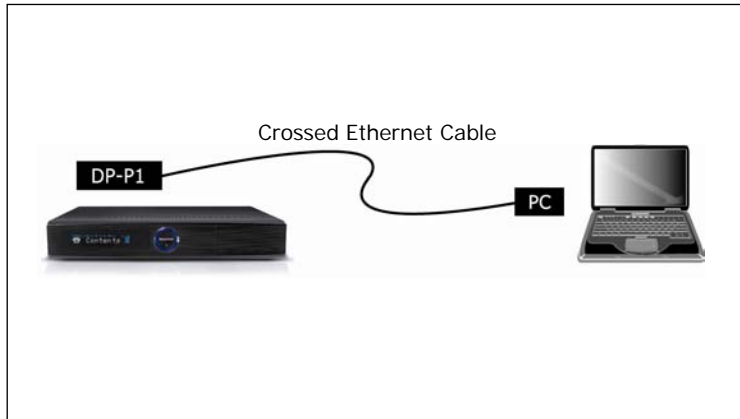


As shown in the picture, connect the DP-P1 to the router with Ethernet cable included in the box. If you purchase a router with a DP-P1 and have no experience of connecting a router with a PC, please refer to user's manual of the router and connect the DP-P1 to the router in the same manner as an additional PC. If the router has the DHCP (Dynamic Host Configuration Protocol) server feature and it is enabled, all the configurations for networking will be set automatically and the DP-P1 is ready to use. For more information on configuring LAN, please refer to Chapter 4 "Quick Setup"

### 3-2. Direct Connection to a PC

With this configuration, you can share contents with a PC but the DP-P1 cannot access the internet. For this connection, the following equipment is required;

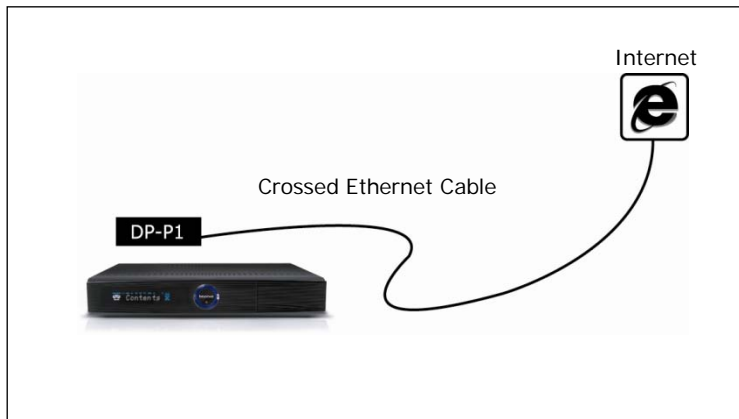
- A PC with an Ethernet connection (Network Interface Card)
- An Ethernet crossover cable.



If your PC has the DHCP server feature and it is enabled, all the configurations for networking will be set automatically and the DP-P1 is ready to communicate with your PC. If your PC does not have the DHCP server feature, you must disable the DHCP feature and set IP (Internet Protocol) information manually for the DP-P1 and PC. For more information on manually configuring DHCP, please refer to Chapter 4 "Quick Setup".

### 3-3. Direct Connection to Internet

With this configuration, you cannot share contents with a PC through your home network. For this configuration, you will need to connect the DP-P1 to your ADSL Modem or Cable Modem with an Ethernet crossover cable (not included in the box). Most ISPs (Internet Service Provider) support DHCP. Therefore, you can connect your DP-P1 directly to your gateway with a crossed cable. If your ISP does not support DHCP you will need to manually configure your DP-P1, please contact your ISP for more information.





This page intentionally left as blank.

## 4. Quick Setup

This chapter guides you through the basic set up of your DP-P1 so that you can utilise its basic features. In order to utilize the advanced features of the DP-P1, refer to Chapter 9 “Advanced Setup”.

### 1. Start Quick Setup

If A/V and antenna connections are complete, press the **STANDBY** button to start. The front display will show “Welcome”, “Loading” and “Start” successively.

When you turn on the DP-P1 for the first time, it will start up in the setup menu automatically and show “Service Scan” on the front display.

#### NOTE

- If digital broadcasting services have been previously stored on the DP-P1, the front display will show a service name e.g. “TEN Digital”.

### 1-1. Quick Setup of Video Output Format

If you can already see a picture on your TV screen, you can skip this section and go on to the next section “Basic Operation”. If the front display indicates that the DP-P1 is ready to use but nothing is displayed on the TV screen, firstly check that your TV is set to the correct video input channel as selected in the “Video Connection” section in Chapter 3 (refer to your TV’s user manual for instructions on how to do this). Secondly, you need to adjust the format and resolution of the video output to suit your TV. Since you are currently unable to access this setting through the set-up menu, a **TV-OUT** button is provided on the remote control unit (RCU). The default video output is SD PAL (576i). Press the **TV-OUT** button successively to switch the video output to SD NTSC (480i), HD PAL (720p), HD NTSC (720p), HDMI PAL (1080i), HDMI NTSC (1080i), PAL HDMI Auto, NTSC HDMI Auto, HDMI PAL (576p) and HDMI NTSC (480p) formats. Select the video output to suit your chosen video connection type, as follows;

- Composite: SD PAL or SD NTSC
- S-VIDEO: SD PAL or SD NTSC
- Component: HD PAL or HD NTSC
- HDMI: PAL HDMI Auto, NTSC HDMI Auto, HDMI PAL or HDMI NTSC

#### NOTE

- The front display indicates the current video format as you press the **TV-OUT** button.
- Allow 3 seconds after pressing the **TV-OUT** button for the configuration change to become effective.
- Once you have a picture displaying on your TV screen, it is recommended that you verify your video format configuration in the Setup menu (see “A/V Output Setting” section later in this chapter).

## 1-2. Basic Operation

### 1) Enter and Exit Setup Mode

You can enter the setup mode by pressing the **SET-UP** button on the remote control. To return to the previous operation mode (e.g. STB/PVR or File Playback), press the **EXIT** button.

### 2) Setup Menu Structure

The setup menu is grouped into four main categories (represented by icons across the top of the screen): Configuration (“Config.”), Network, Miscellaneous (“Misc.”) and System. Firstly, choose one of these main categories using the **LEFT/RIGHT** buttons. As you select a main category, a list of sub-categories will be displayed on the left side of the screen. When you choose a sub-category with the **UP/DOWN** buttons, the items belonging to the sub-category will be listed in the item list. Press the **OK** button to enter the item list, and use the **UP/DOWN** buttons to select an item in the item list. To access the configuration options for an item, press the **OK** button. To exit from the item list press the **EXIT** button.



- **LEFT/RIGHT** buttons: Select a main category
- **UP/DOWN** buttons: Select a sub-category
- **OK** button: Enter the item list (**UP/DOWN** to select an item, **OK** to access the item’s configuration options).
- **EXIT** button: Exit from the item list.

#### NOTE

- While in the item list, the **LEFT/RIGHT** buttons can still be used to navigate through the top menu.
- This chapter explains only the Configuration and Network categories of the setup menu. The remaining categories Miscellaneous and System will be explained in Chapter 9 “Advanced Setup”.

## 3) How to Change Configuration

In the setup menu, there are several ways to change configuration. Here are three examples of configuration changes frequently used.

- Selection in a pop-up menu: If you press the **OK** button, a pop-up menu will be displayed. Use the **UP/DOWN** buttons to select an option and press the **OK** button to apply this setting. If you decide not to change settings, press the **EXIT** button to close the pop-up menu.



- Setup using the **NUMERIC** buttons: The **NUMERIC** buttons are used to set configuration with numbers such as time information. You can also move the cursor to the left or right by using the **LEFT/RIGHT** buttons while you are editing the configuration. Press the **OK** button to apply the change, or cancel it with the **EXIT** button.



### NOTE

- You can also use the **CH +/-** buttons to increase or decrease the value instead of typing with the **NUMERIC** buttons.

- On-screen keyboard: If you need to input alphabetic characters, a “Keyboard Input” pop-up window will be displayed. You can move the cursor with the **UP/DOWN/LEFT/RIGHT** buttons and select the letters with the **OK** button. The **RECALL** button works as a backspace key. You can also clear your inputs by selecting “Clear” You can move the cursor one place to the left or right by using the **YELLOW** or **BLUE** buttons respectively.



If you need to input upper case characters, press the **RED** button. You can return to lower case characters by pressing the **RED** button again.

If you need to input special characters, press the **GREEN** button. The screen keyboard now displays special characters. You can return to small characters by pressing the **GREEN** button again.



After the input, you can save it by selecting “Save & Exit” with the **OK** button. If you do not want to save, please press the **EXIT** button.

#### NOTE

- If you need to input numbers, use the **NUMERIC** buttons on the RCU.
- You can also type alphabet characters with the **NUMERIC** buttons. Refer to the alphabets printed on the **NUMERIC** buttons. You can configure the order of the **NUMERIC** buttons to be alphabet first or number first (see “Keyboard Order” section in Chapter 9).

## 2. Configuration

### 2-1. Time Setting

The date and time information is used to start timer recordings. Therefore, you need to configure the time and date information precisely. You can also select preferred date and time formats. The following picture illustrates the items which you configure to set the time and date.



- Mode: Select how to obtain the date and time information. Choose either of the following options;

- AUTO – the time and date information is received automatically from the digital broadcast signal when you turn on the DP-P1.
- MANUAL – the time and date information is set by you, and maintained by the DP-P1’s internal clock.
- NETWORK – the time and date information is received from the NTP(Network Time Protocol) server.

Please note if choosing AUTO mode that broadcasters can occasionally transmit the wrong time and date information, and this can cause problems with recording schedules.

- Date Format: Select a display format for the date either “DD/MM/YYYY”, “MM/DD/YYYY” or “YYYY/MM/DD” from the pop-up menu. (DD-day, MM-month, YYYY-year)
- Time Format: Select your preferred time format, either 12-hour or 24-hour format.
- Time Offset (for MANUAL mode only): Set the difference between GMT and your local time zone e.g. Sydney and Melbourne = +10:00.
- Current Time (for MANUAL mode only): Set the current date and time.
- Daylight Saving (for AUTO mode only): Enable or disable Daylight Saving time-offset.
- Region: (for AUTO mode only): Select your region so that the correct GMT offset is showing in Time Offset.

#### NOTE

- Your selected date and time format will be applied to all date and time displays in the graphical menus.

## 2-2. A/V Output Setting

You need to set the video and audio configurations to suit your TV and audio equipment. Make sure the video and audio connections on the DP-P1 are correctly connected to your TV and audio equipment (see the “A/V Connection” section in Chapter 3).

The A/V Output menu consists of two parts; video output and audio output.



### 1) Video Outputs

- Video Type: Select either PAL or NTSC format. PAL is the standard format in Australia.
- Video Output: Select the connection type used to connect your DP-P1 to your TV set in the “Video Connection” section in Chapter 3.
- Resolution: If you select HDMI or Component for video output, set the resolution to suit the resolution of your TV screen.
- TV Aspect Ratio: select either 4:3 or 16:9 to suit the aspect ratio of your TV screen.

### NOTE

- Component video output supports SD (576i for PAL and 480i for NTSC), 480p, 576p, and HD 720p and 1080i.
- If you set the video output resolution to HD (i.e. more than 576p), the composite and S-Video outputs will be disabled automatically.
- If you set the video output resolution higher than the maximum resolution that your TV set can accept, your TV will not display a picture (refer to your TV's user manual).
- If you set the HDMI output as Auto, the DP-P1 configures the best format of HDMI suitable for your TV set automatically. Some TV sets do not support the auto-configuration function. In this case, you must set the resolution manually.
- HDMI outputs audio in digital format as well.



### 2) Audio Outputs

The DP-P1 supports 5.1ch audio via the RCA connectors on the rear of the unit and will decode and output Dolby Digital via a built in decoder. It also supports digital outputs with optical and coaxial ports.

- Audio Format: Select one of the following options to suit your chosen audio connection in the “Audio Connection” section in Chapter 3;
  - 2ch – for stereo speaker connections.
  - 5.1ch – for 5.1 speaker connections.
  - passthrough – to use an external audio decoder (e.g. amplifier).
- S/PDIF Output: Select “Enable” if using the digital audio output through the coaxial and optical ports.
- Dolby D Compression: Select either of the following options;
  - Line Mode – recommended for most users.
  - RF Mode – recommended for when audio is connected directly to the TV using RF cables.

#### NOTE

- If you set the audio format to 2ch, the DP-P1 mixes down 5.1ch audio source to 2ch audio.
- If the content of a channel broadcasted has 2ch audio source, the DP-P1 cannot expand the 2ch audio source to 5.1ch audio format. Therefore, you will only hear sound from the front speakers even though you have connected a 5.1ch speaker system and set the DP-P1 as 5.1ch audio.

### 3) Colour Setting

You can adjust the colour output of the DP-P1.



The three options are brightness, contrast and saturation. Use the **UP/DOWN** buttons to select each option, and adjust the setting with the **LEFT/RIGHT** buttons. You can restore all colour settings to the factory default values by pressing the **RED** button. To apply your chosen settings, use the **UP/DOWN** buttons to select “Accept” and press **OK**. To cancel the new settings, select “Cancel” and press **OK**, or press the **EXIT** button.

## 2-3. Service Scan

Before you can watch a broadcasted service, you need to scan for services first. The scanned services will be stored in non-volatile memory. Therefore you don't have to scan for services again unless you delete services stored in memory. If no services stored in memory, the service scan page will be presented automatically.



- Antenna DC (+5V) Power: You can supply DC (+5V, max. 100mA) power to the antenna through the antenna cable. Make sure that your antenna is an active type (i.e. the antenna requires external DC power to enhance the sensitivity) before you supply DC power to the antenna.
- Scanning Range: Select either of the following options;
  - FULL - scans all VHF and UHF channels.
  - PARTIAL - scans only a specific channel or channel range (requires setting start and end channels manually).
- Start Channel (for PARTIAL scanning range only): Select the first channel of your required scanning range.
- End Channel (for PARTIAL scanning range only): Select the last channel of your required scanning range.
- Signal Quality Bar: Two horizontal bars indicate the signal quality of the start and end channels. The leftmost rectangle changes from black to yellow when the tuner locks the signal properly.



- IF THE ANTENNA IS A PASSIVE TYPE, ENABLING THE DC POWER MAY DAMAGE THE ANTENNA AND THE DP-P1.

- Start Scan: After selecting your scanning range, select Start Scanning and then press the **OK** button. On the screen, the scanning window appears and displays the progress.



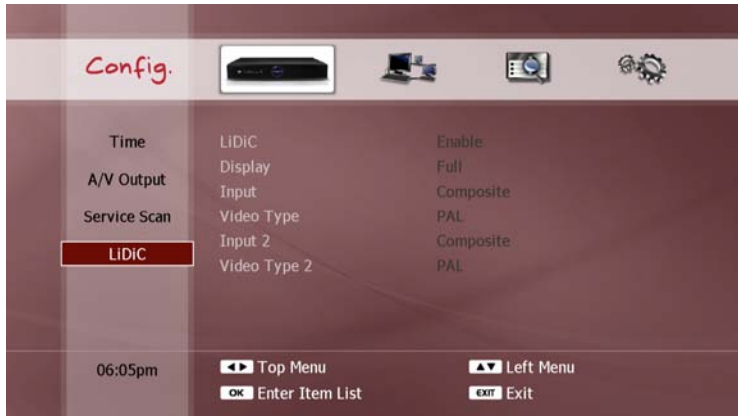
Once scanning is complete, you are ready to watch live television by pressing the **LIVE** button.

### NOTE

- You cannot select an end channel smaller than the start channel.
- If you perform a "FULL" service scan, your previous service list, favorite groups and all timer settings will be deleted.
- If you perform a "PARTIAL" service scan, the new service will be added to your current service list.

## 2-4. LiDiC (Line-in Digital Converter – available separately)

The LiDiC can receive either Composite or S-VIDEO signals from one or two external A/V devices simultaneously, and pass these signals through to the DP-P1. You need to configure the LiDiC to suit the connected external A/V device(s) as follows:



- LiDiC: You can enable or disable the LiDiC. When the LiDiC is enabled, new services named “950 LiDiC 1” and “951 LiDiC 2” will appear in the service list. You can watch and enable the PVR functions for external A/V signals by selecting the 950 or 951 service.
- Display: Select either of the following options;
  - Full: Displays incoming video signal as 16:9 aspect ratio.
  - Centre: Displays incoming video signal as 4:3 aspect ratio.
- Input 1: Select either Composite or S-VIDEO to suit the connection of the external A/V device connected to Input 1 of the LiDiC.
- Video Type 1: Select either PAL or NTSC to suit the video output of the external A/V device connected to Input 1 of the LiDiC.
- Input 2: Select either Composite or S-VIDEO to suit the connection of the external A/V device connected to Input 2 of the LiDiC.
- Video Type 2: Select either PAL or NTSC to suit the video output of the external A/V device connected to Input 2 of the LiDiC.

### NOTE

- Refer to the LiDiC user manual for more information about connecting external A/V devices to the DP-P1.

## 3. Network

The DP-P1 supports an Ethernet (LAN) interfaces. This section will guide you on how to configure the network interfaces.

### 3-1. Enable Ethernet

The first step is to enable the Ethernet interface. In the Network Device menu, select the "LAN" option.



#### NOTE

If you select "Disable", the DP-P1 will not appear as a networked device on your network.

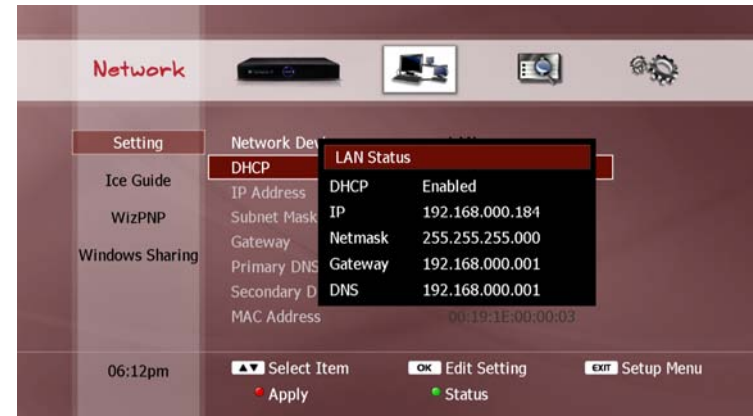
## 3-2. Ethernet Setting

### 1) Automatic Configuration

If you have selected "LAN" as your network interface, all items to be configured for the Ethernet interface will now be displayed.



- DHCP: If you want all configuration options to be set automatically from your router, select the "Enable" option. In this case, all subsequent settings options are disabled. Then press the **RED** button to update the LAN settings. A "LAN Status" pop-up window will now appear to show you the updated LAN settings.



Press **EXIT** to close the "LAN Status" pop-up window.

### NOTE

- You can also press the **GREEN** button to open the "LAN Status" pop-up window to check your settings.
- In order to use the DHCP function for the DP-P1, your router must support DHCP (refer to your router's user manual).

## 2) Manual Configuration

If you set “DHCP” to “Disable”, you must input the network settings manually. Use the **NUMERIC** and **LEFT/RIGHT** buttons to configure the following items;

- IP Address: enter a 12-digit IP address.
- Subnet Mask: enter a 12-digit subnet mask.
- Gateway: enter a 12-digit gateway.
- Primary DNS Server IP: enter a 12-digit primary DNS server IP address.
- Secondary DNS Server IP: enter a 12-digit secondary DNS server IP address.



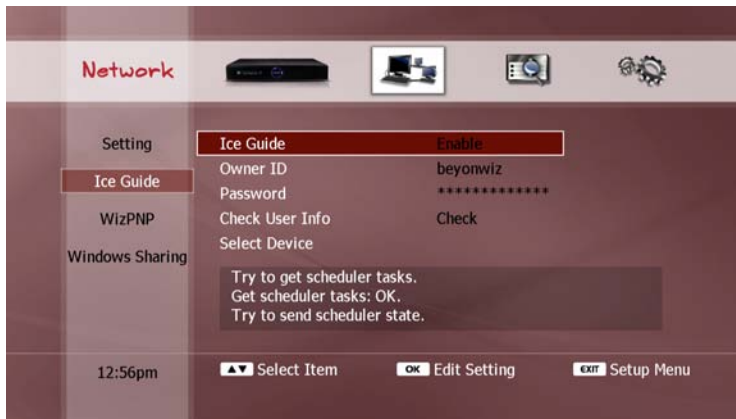
Then press the **RED** button to update the LAN settings. A “LAN Status” pop-up window will now appear to show you the updated LAN settings. Press **EXIT** to close the “LAN Status” pop-up window

### NOTE

- If an address you need to input does not have 12 digits, use preceding 0s to make it 12 digits in length e.g. an address of “192.168.0.1” must be entered as “192.168.000.001”.
- The MAC Address setting will display the MAC address of the Ethernet interface, but you cannot change it.
- You can also press the **GREEN** button to open the “LAN Status” pop-up window to check your settings.
- If you change the DHCP setting to “Enable”, the manual settings no longer apply, however they will still display the previously set configuration values.

### 3-3. Ice Guide

The DP-P1 supports IceTV service through the Internet. If you have an IceTV account, and wish to utilise this service on your DP-P1, you must configure the following items;



- Ice Guide: Select "Enable" to allow the DP-P1 to get and update the electronic program guide (EPG) from the IceTV service. If you select "Disable", the DP-P1 will only update the EPG with the data supplied by the broadcaster of the currently viewed service.

- Owner ID: Enter your user ID for your IceTV account.
- Password: Enter your password for your IceTV account.
- Check User Info: Press the **OK** button to check if your IceTV account information is valid.
- Select Device: Select the correct device name which you have set on the IceTV web-site (<http://www.icetv.com.au>).

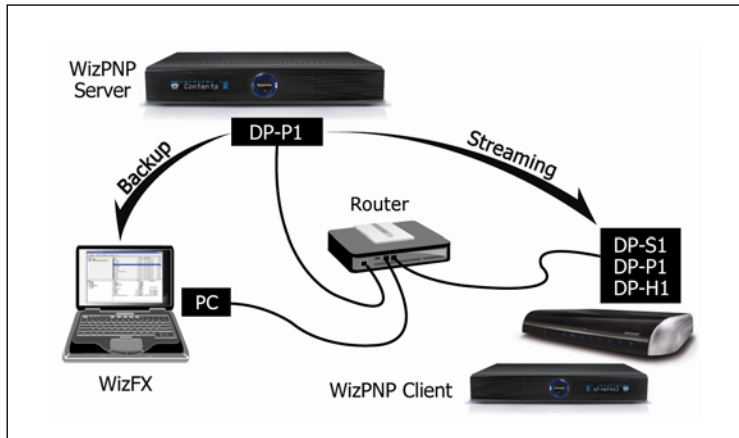
#### NOTE

- For more information about IceTV, visit [www.icetv.com.au](http://www.icetv.com.au), or refer to the "EPG (Electronic Program Guide)" section in Chapter 5 to find out how you can utilise the 7-day EPG using the IceTV service.
- You can schedule timer recordings on your DP-P1 from your PC or mobile phone. Visit [www.icetv.com.au](http://www.icetv.com.au) for more information regarding this service.



## 3-4. WizPNP

WizPNP enables sharing of recorded files with other beyonwiz products and PCs. The following picture illustrates how WizPNP functions;



You can set the DP-P1 to be a WizPNP client, a WizPNP server, or both client and server simultaneously.

### **WARNING**

- If multiple WizPNP clients connect to a WizPNP server and stream contents files from the WizPNP server, the operation of WizPNP may be slow.

### 1) Set as WizPNP Client

Setting the DP-P1 as a WizPNP client allows access to another beyonwiz product which has been enabled as a WizPNP server, so the DP-P1 can play files in the server.



To set the DP-P1 as a WizPNP client, select "Enable" in the "Client" menu. For information regarding how to play files in a WizPNP server, see Chapter 6 "File Playback Function".

You can disable the WizPNP client function by selecting "Disable" in the "Client" menu.

## 2) Set as WizPNP Server

Setting the DP-P1 as a WizPNP server allows access from another beyonwiz product which has been enabled as a WizPNP client, so the client can play files in the DP-P1. It also allows your PC to access the DP-P1 in order to transfer files.



To set the DP-P1 as a WizPNP server, select "Enable" in the "Server" menu. The following settings are available for configuring:

- Name: This name is used to identify the WizPNP server. The default name is "beyonwiz". To change the server name, press the **OK** button and use the "Keyboard Input" pop-up window to enter your desired name.
- Port: This is 5-digit number, which has maximum value as 65534. The default number is 49152. You should not change this number unless you experience difficulty with the WizPNP server function.

You can disable the WizPNP server function by selecting "Disable" in the "Server" menu.

### NOTE

- For your PC to connect to the DP-P1 you will require a software application "WizFX" to be installed on your PC. Visit the beyonwiz website ([www.beyonwiz.com.au](http://www.beyonwiz.com.au)) to download the "WizFX" software application and user instructions.

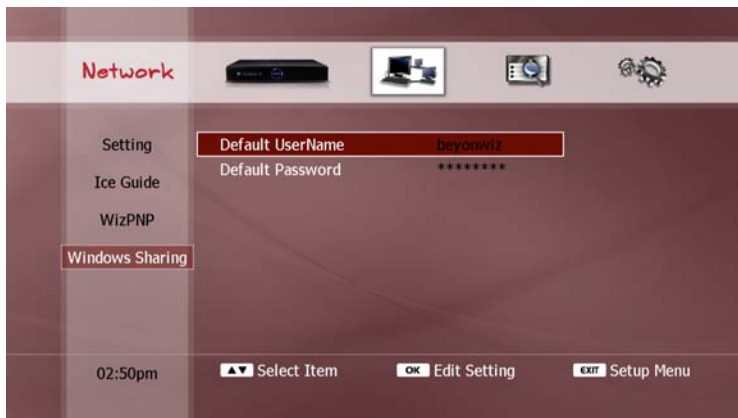
## 3-5. Windows Sharing

The DP-P1 can access files in a shared folder on your PC. This function requires configuration in the following situations;

- (i) if the PC's "Guest" account requires a username and password, or
- (ii) if a PC user account other than the "Guest" account is used.

In these cases, you must configure the following settings;

- Default UserName: Use the "Keyboard Input" pop-up window to enter the username of your PC user account.
- Default Password: Use the "Keyboard Input" pop-up window to enter the password of your PC user account.



### NOTE

- The PC's "Guest" account cannot be used to copy files from the DP-P1 to a shared folder on the PC. To perform this function, a different PC user account must be used, and the DP-P1's "Windows Sharing" function configured accordingly.

## 5. STB & PVR Function

The DP-P1 supports various ways of enjoying multimedia content. These functions are divided into three parts:

- (i) STB (Set-top Box) and PVR (Personal Video Recorder) functions,
- (ii) file playback functions, including playback of programs recorded with the PVR function, and
- (iii) internet services (not yet active).

This chapter describes the STB and PVR functions. Now that your DP-P1 is set up (see Chapter 4 “Quick Setup”), your unit will automatically start up in this mode. If you are using the DP-P1 in another operating mode, you can return to the STB/PVR mode by pressing the **LIVE** button on the remote control.

### 1. Basic STB Function

#### 1-1. Service Change

##### 1) Change between TV and Radio Services

You can watch TV services or listen to radio services with the DP-P1. Press the **TV/RADIO** button to switch between TV and radio services.



If the TV picture appears to be showing in the wrong aspect ratio, press the **ZOOM** button to swap between 16:9 and 4:3 modes.

#### NOTE

- The aspect ratio is only changed temporarily when using the **ZOOM** button. The aspect ratio will return to its default setting (see “Video Outputs” section in Chapter 4) upon changing services or entering File Playback or Setup modes.

### 2) Change Service with Service List

The service list contains all the broadcasting services your DP-P1 can receive. Press the **LIST** button to display the service list, as shown below;



The service list window is titled “TV Service” or “Radio Service”, depending on which service mode you are currently using, and will list all available TV or radio services accordingly. Select a service by using the **UP/DOWN** buttons, and press the **OK** button to change to that service.

If your service list is very long, you can scroll through the list quickly by using the **LEFT/RIGHT** buttons to skip up and down one page respectively. To hide the service list window, press the **EXIT** button.

#### NOTE

- You can extend the service list window by hiding the help bar showing along the bottom of the screen. Press the **RED** button to swap between hiding and showing the help bar.
- You can also edit the service list to rename, delete or lock services (see “Service List Edit” section later in this chapter).
- If you have enabled the LiDiC in the Setup menu (see “LiDiC” section in Chapter 4), services named “950 LiDiC 1” and “951 LiDiC 2” will appear in the service list. You can watch and enable the PVR functions for external A/V signals by selecting the 950 or 951 services.

### 3) Other Ways to Change Service

There are other ways of changing services, as follows;

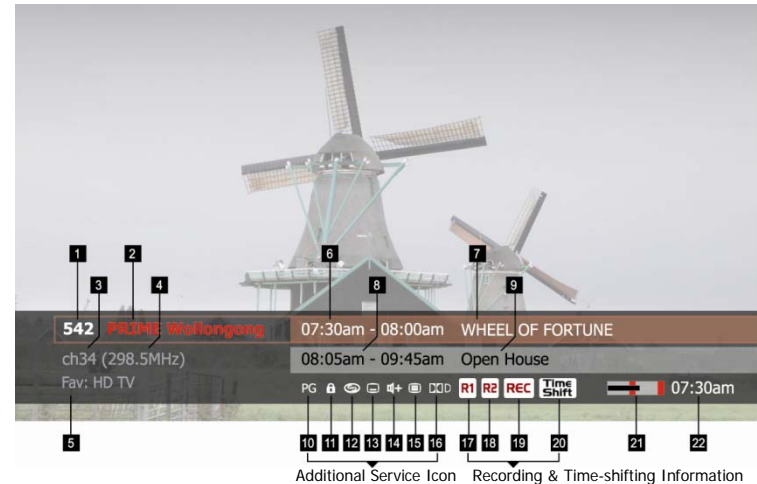
- **CH+ /CH-** buttons: Press the **CH+** or **CH-** buttons to change to the next or previous service in the service list.
- **NUMERIC** buttons: Use the **NUMERIC** buttons to change to a service directly e.g. to change to service 146, press the 1, 4, and 6 buttons consecutively and then press **OK**.
- **RECALL** button: Press the **RECALL** button to return to the previously viewed service.
- Electronic Program Guide (EPG): You can change services by using the EPG (see "EPG (Electronic Program Guide)" section later in this chapter).

#### NOTE

- If you press the **CH+** or **CH-** button continuously to change service, only the information box will be updated to show your planned service change. The service will then change 3 seconds after your last button press.
- When the DP-P1 is recording two programs simultaneously, both tuners are allocated for the recordings. Therefore you can only change to a limited number of services during this time.
- When selecting channels using the numeric buttons, make sure you know the channel number you wish to select. Channels can appear on a different number in each state, e.g. Channel 10 is not always on number 10 in the digital network.

## 1-2. Information Box

You can view information about the current service and the current program using two information boxes, both accessed by using the **ⓘ** button. The first press will show an information box containing details of the current service, current program title and its recording status (if applicable). A second press will show an additional information box containing the synopsis of the current program. If the synopsis is too long to fit in the information box, use the **DOWN** button to see the additional text. A third press of the **ⓘ** button will hide both information boxes, as will the **EXIT** button at either stage. The following screen shots show the layout of the information boxes, and the meaning of each symbol which may appear.



- |                                |   |
|--------------------------------|---|
| 1. Service number              | 13. Subtitle support                                |
| 2. Service name                | 14. Multiple audio language or audio format support |
| 3. Channel number              | 15. Teletext support                                |
| 4. Channel frequency           | 16. Dolby Digital audio support                     |
| 5. Favorite group is selected. | 17. One program is recording.                       |
| 6. Current program duration    | 18. Two programs are recording.                     |
| 7. Current program name        | 19. Current service is recording.                   |
| 8. Next program duration       | 20. Watching time-shifted position.                 |
| 9. Next program name           | 21. Signal quality                                  |
| 10. Censorship support         | 22. Current time                                    |
| 11. Locked Service             |   |
| 12. Pay service                |   |

### 1-3. Volume Level Adjust

Use the **VOL+ /VOL-** buttons respectively to increase or decrease the level of the analogue and the digital audio outputs. The **MUTE** button will turn off both the analogue and digital audio outputs. You can cancel the mute function by pressing the **MUTE** button a second time, or by pressing either of the **VOL+ /VOL-** buttons.



#### NOTE

- If you have set the audio format to “passthrough” (see “Audio Outputs” section in Chapter 4), you cannot control the volume level of the digital audio outputs set to AC3 or Dolby Digital 5.1 audio. In these cases, you must use the remote control of your audio decoder (e.g. amplifier) to adjust the volume level.

### 1-4. Soundtrack Change

If the current TV program provides more than one language or audio format (e.g. MPEG audio and Dolby audio together), you can change the setting while you continue to watch the program. Press the **SOUNDTRACK** button to show a list of the languages and audio formats available. Use the **UP/DOWN** buttons to select your desired setting and then press **OK** to change it. To hide the list, press the **SOUNDTRACK** button a second time, or press **EXIT**.





## 1-5. Subtitle and Teletext Service

### 1) Subtitle Service

If you wish to view subtitles for the program, press the **SUBTITLE** button to display a list of available languages. Use the **UP/DOWN** buttons to select your desired language and then press **OK**. The subtitles function will now be activated. To turn off the subtitles function, press the **SUBTITLE** button again, select "Disable" from the list and press **OK**.



#### NOTE

- You cannot use the subtitle function if the service provider does not provide a subtitle service.

### 2) Teletext Service

Teletext is a free service broadcast by TV stations which gives the latest information on many topics such as news, weather, television programs and share prices. As the teletext service is optional, not all TV programs include teletext information. The DP-P1 supports teletext services by emulating a teletext interpreter. Press the **TELETEXT** button to display the teletext pages. Use the **RED, GREEN, YELLOW, BLUE** and **NUMERIC** buttons to access additional information from the teletext service.



## 1-6. Sleep Timer

The sleep timer can be used to set the DP-P1 to turn off automatically at a specific time. To set a timer, press the **SLEEP** button repeatedly until your desired time delay is displayed. If one or more recordings are still active when the sleep timer delay is reached, the DP-P1 will remain on until the completion of the recording(s). To cancel the sleep timer, press the **SLEEP** button again repeatedly until the time delay of "0 min." is displayed.



### NOTE

- The Subtitle Language, Sound Track, Teletext and Sleep timer functions can also be accessed by pressing the **POP-UP** button.



## 2. Service Edit

### 2-1. Service List Edit

You can edit the service list to lock, delete or rename services. Press the **LIST** button to show the service list, then use the **UP/DOWN** buttons to select a service.



The editing functions available are as follows;

- Lock/Unlock: For your privacy, you can protect a service from unauthorised access. Press the **GREEN** button and enter a 4-digit PIN code. A 'lock' symbol will now appear alongside the service name to indicate that this service is locked. Users must enter the 4-digit PIN code in order to watch a locked service. To unlock a service, repeat the procedure by pressing the **GREEN** button and entering the 4-digit PIN code.
- Delete: You can delete an unwanted service from the service list. Press the **YELLOW** button to remove it from the list.
- Rename: You can change the service name from that given by the broadcaster. Press the **Ⓜ** button to display the "Keyboard Input" pop-up window and enter your desired name (see "On-screen Keyboard" section in Chapter 4).

#### NOTE

- A deleted service can only be re-instated to the service list by performing a service scan (see "Service Scan" section in Chapter 4).

## 2-2. Favorite Group

A favorite group is your personal collection of TV or radio services. Up to 20 favourite groups can be created.

### 1) Favorite Group Edit

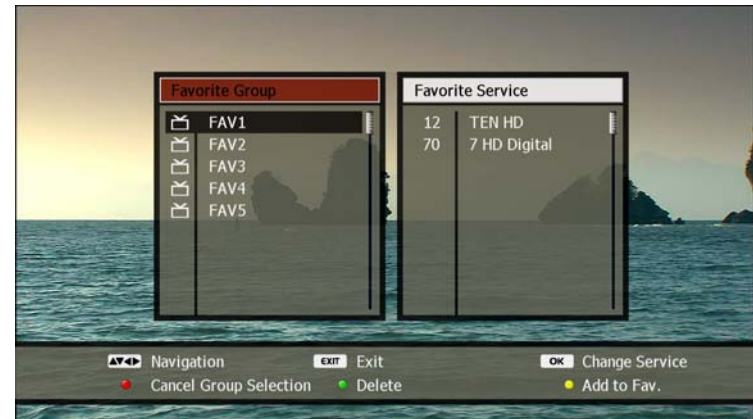
To start, you must create your favorite groups in the Setup menu (see “Favorite” section in Chapter 9).

### 2) Select Service on Favorite Group

To select a service that belongs to a favorite group, press the **FAV** button. Two windows will appear. The left window lists your favorite groups and the right window displays the services which belong to that group. Select a favorite group in the left column with the **UP/DOWN** buttons and press **OK**. The cursor then moves to the right column. Select a service with the **UP/DOWN** buttons and press **OK** to change to this service.

#### NOTE

- You can also use the **LEFT/RIGHT** buttons to move to the “Favorite Group” column or “Favorite Service” column.
- You can exit from the favorite group by pressing **EXIT**.



### 3) Add Current Service to Favorite Group

You can add the service you are watching to a favorite group. Press the **FAV** button to display the favorite list and use the **UP/DOWN** buttons to select a favorite group. To add the current service to this favorite group, press the **YELLOW** button.

## 4) Service Change on Favorite Group

Select a service in a favorite group using step 2 above. You can now change services within this favorite group in the following ways;

- **LIST** button: The service list will now only show the services which belong to the current favorite group. Use the **UP/DOWN** and **OK** buttons as usual to change among these services on the list.
- **CH+ /CH-** buttons: Pressing the **CH+** or **CH-** buttons will change to the next or previous service as listed in the current favorite group.



To exit from a favorite group and show all services available in the service list, press the **BLUE** button when the service list is displayed.

You can also exit from the favorite list by pressing the **RED** button when the favorite list is displayed.



### NOTE

- When viewing a service, the information box indicates which favorite group is currently selected

## 3. PVR Functions

The major functions of a PVR are time-shifting and recording. This allows you to pause or rewind live TV, and even to go back and make a recording of events that have already happened. To perform these functions, the DP-P1 utilises the internal hard disk drive (HDD).

### 3-1. Time-shifting

The DP-P1 retains all received broadcast data from the current service up to a maximum of 2 hours on the internal HDD. This time-shift buffer allows you to;

- (i) pause a live TV program and resume watching it later, and
- (ii) rewind a live TV program and replay it.

The following functions can be used with the time-shift buffer, in the same manner as if you were watching a recorded file;

- Trick mode: allows fast-forward, rewind, pause, skip and jump.
- Bookmark: allows returning to a chosen position easily.
- A-B Repeat: allows playing a chosen section repeatedly.

For detailed information about these functions, see the “Movie Playback” section in Chapter 6.

#### NOTE

- The time-shift buffer will be deleted if you change to another service or enter the File Play, Setup or WizTV modes.
- If two services are being recorded simultaneously and you are watching a third service, the time-shift function for the third service will be disabled automatically.
- Trick-mode operations are not available if there is less than 10 seconds of data in the time-shift buffer.
- When your current position in the time-shift buffer is less than 10 seconds from the live broadcast position, you will be automatically jumped to the live broadcast position.
- The time-shift function can be disabled in the Setup menu (see “Time-shifting” section in Chapter 9).
- The time-shift function is not available for radio services



### 3-2. Instant Recording

To record the current service and store it on the HDD instantly, press the **REC** button. A recording will start, and a "Recording" window will appear with various options to configure your recording.



Use the **UP/DOWN** buttons to select each recording option you wish to change. The recording options are as follows;

- **Duration:** Set the recording duration. The default recording duration is 70 minutes. You can reduce or extend the duration of the recording with the **LEFT** and **RIGHT** buttons respectively.
- **Starting Point:** Select the starting point of the recording. Use the **LEFT/RIGHT** buttons to select one of the following options;
  - **Live:** Record from the current position (default setting).
  - **Current Program:** Record only the current program, even if there is a previous program stored in the time-shift buffer.
  - **All:** Record all programs in the time-shift buffer.
- **File Lock:** You can lock the recording file to prevent unauthorised access and deletion. Your 4-digit PIN access code will be required to play or delete a locked file (see "Set PIN Number" section in Chapter 9). The default setting is "Unlock". Use the **LEFT/ RIGHT** buttons to select "Lock".
- **File Name:** Set the file name of the recording. The default recording file name is the name of the program 40 minutes from the current time, as provided by the service broadcaster or your service provider. To change the file name, press **OK** to display the "Keyboard Input" pop-up window and enter your desired name (see "On-screen Keyboard" section in Chapter 4).

After setting all recording options, use the **UP/DOWN** buttons to select "Accept" and press **OK**, or press the **REC** button again. If you wish to cancel the recording, select "Cancel" and press **OK**, or press **EXIT**.

**NOTE**

- If there is only one program in the time-shift buffer, the options “Current Program” and “All” have the same meaning, therefore the “Current Program” option will not appear.
- If the time-shift function has been disabled in the Setup menu (see “Time-shifting” section in Chapter 9), you cannot record a program from the time-shift buffer. In this case, the only starting position you can choose is “Live”, therefore the “Current Program” and “All” options will not appear.
- The asterisk(\*) mark on the file name indicates that the DP-P1 has assigned the program name automatically. If you change the program name by using the on-screen keyboard, the asterisk(\*) mark will be automatically removed.
- You can record a radio program using the same procedure.

- If two recordings are already in progress, you cannot record another program. In this case, a warning message will be displayed. You must stop one of these recordings in order to record the current program (see “Pause/Resume and Stop Recording” section later in this chapter).





## 3-3. Timer

You can set the DP-P1 to automatically record programs by setting timers. The timer function can also be used to automatically change service in order to view an important program, or to transmit the picture to an external recording device such as a VCR (Video Cassette Recorder). There are two methods of creating timers, as follows;

- via Timer List: requires the recording details to be individually set.
- via EPG (Electronic Program Guide): sets the recording details automatically.

This section explains the Timer List method. The EPG method will be explained in the “EPG (Electronic Program Guide)” section later in this chapter.

### 1) View Timer List

The timer list is used to view a list of all the timers you have created. To view the timer list, press the **POP-UP** button, and then press **OK**. To close the timer list, press **EXIT**.

#### NOTE

- The timers are arranged by the start date and time.
- A timer is shown in dark grey if it is currently active (i.e. recording).
- You can set a maximum of 100 timers.



## 2) Add New Timer

To set a new timer, press **POP-UP** then **OK** to display the timer list. Then press the **RED** button to display the "Add Timer" window, as shown below.



You can configure the following items;

- **Service:** Select the service you wish to record. The default setting is the service that you are currently viewing. To change it, press **OK** to display the service list. Use the **UP/DOWN** buttons to select your desired service, and then press **OK**. To record a radio service, press the **TV/RADIO** button to change to the radio service list.
- **Date:** Set the start date of the recording. Move the cursor with the **LEFT/RIGHT** buttons and change the date with the **CH+/CH-** buttons or by using the **NUMERIC** buttons



- **Start Time:** Set the start time of the recording. Move the cursor with the **LEFT/RIGHT** buttons and change the time with the **CH+/CH-** buttons or by using the **NUMERIC** buttons.
- **Duration:** Set the recording duration. The default recording duration is 70 minutes. You can reduce or extend the duration of the recording with the **LEFT** and **RIGHT** buttons respectively.

### NOTE

- After changing the date, start time or duration, pressing the **OK** button or moving to the next line will update the file name and end time when applicable.

- **Recurrence:** Set the recurrence of the recording (if any). Use the **LEFT/RIGHT** buttons to select one of the following options;
  - **Once:** A one-off event with no recurrence (default setting).
  - **Daily:** Record every day.
  - **Weekend:** Record on Saturday and Sunday only.
  - **Weekday:** Record from Monday to Friday only.
  - **Weekly:** Record on the same day every week.
- **File Name:** Set the file name of the recording. The default file name is the name of the scheduled program as provided by the service broadcaster or your service provider. To change the file name, press **OK** to display the “Keyboard Input” pop-up window and enter your desired name (see “On-screen Keyboard” section in Chapter 4).
- **Mode:** Select the timer function. The default setting is “Record”, where the program will be recorded to the HDD. If you would prefer to automatically change service in order to view the program or transfer it to an external recorder, use the **LEFT/RIGHT** buttons to select “View”.
- **File Lock:** You can lock the recording file to prevent unauthorised access and deletion. Your 4-digit PIN access code will be required to play or delete a locked file (see “Set PIN Number” section in Chapter 9). The default setting is “Unlock”. Use the **LEFT/ RIGHT** buttons to select “Lock”.

- **Auto Delete:** You can set automatic deletion function to automatically delete unwanted files that are older than the specified time. Use the **LEFT/RIGHT** buttons to select one of the following options;
  - **Never:** Set not to delete.
  - **After X days:** Delete after days you set.

To save the settings for the timer, use the **UP/DOWN** buttons to select “Accept” and press **OK**. To cancel the timer, select “Cancel” and press **OK**, or press **EXIT**.

### NOTE

If the new timer overlaps two existing timers at the same time point a recording conflict will occur (see “Timer Conflict” section later in this chapter).

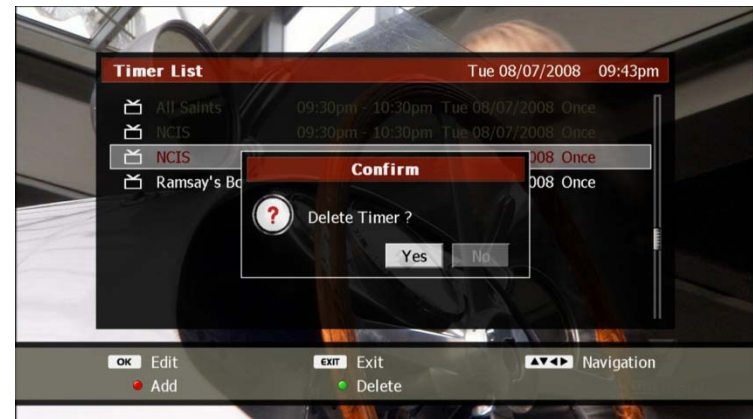
### 3) Edit Timer

To modify an existing timer, press **POP-UP** then **OK** to display the timer list. Then use the **UP/DOWN** buttons to select your desired timer and press **OK** to display the “Edit Timer” window, as shown below. You can modify any setting in the same manner as described in the previous “Add New Timer” section. To save the changes to the timer settings, use the **UP/DOWN** buttons to select “Accept” and press **OK**. To cancel the changes to the timer settings, select “Cancel” and press **OK**, or press **EXIT**.



### 4) Delete Timer

To delete an existing timer, press **POP-UP** then **OK** to display the timer list. Then use the **UP/DOWN** buttons to select your desired timer and press the **GREEN** button. A confirmation dialog will appear, as shown below.



Use the **LEFT/RIGHT** buttons to select “Yes” and press **OK**. If you decide to keep the timer, select “No” and press **OK**, or press **EXIT**.

#### NOTE

- You cannot edit or delete a timer which is currently active i.e. recording.

### 5) Power Off during Recording

If you attempt to put the DP-P1 into standby mode while a recording is in progress, a "Power Off" dialog will be displayed, as shown below.



You can then choose from the following options;

- Later: the DP-P1 will return to standby mode when the current recording(s) have completed.
- Yes: the current recording(s) are stopped and the DP-P1 goes into standby mode immediately.
- No: the standby mode procedure is cancelled and the DP-P1 remains on.

Use the **LEFT/RIGHT** buttons to select your desired option and press **OK**.

If a timer starts while the DP-P1 is in standby mode, the DP-P1 will turn on automatically and perform its operation until the timer has completed. If remote control activity is detected during this period, the DP-P1 will remain on so you can continue to use it without interruption, otherwise it will return to standby mode.

#### NOTE

- If AC power is not supplied to the DP-P1 properly (e.g. a power blackout), it cannot perform a timer recording. If a timer fails due to this reason, this timer remains in the timer list as notification.
- If AC power is restored within a timer's duration, the timer will become active immediately and recording will begin.
- If AC power is not supplied for a long period i.e. several hours, the internal clock of the DP-P1 will lose its time setting, and all timers will fail until the time setting is restored (see "Time Setting" section in Chapter 4).
- If you do not respond to the "Power Off" pop-up dialog, the DP-P1 will behave as if you selected "Later", and return to standby mode when the recording is finished

### 3-4. Trick Mode Operation

If you are watching a service while it is being recorded, or change to a service which is already being recorded, you can perform the same trick-mode operations as for time-shifting and file playback (see "Movie Playback" section in Chapter 6). This applies even if the time-shift function has been disabled in the Setup menu (see "Time-shifting" section in Chapter 9).





## 3-5. Recording Control

### 1) Pause/Resume and Stop Recording

To pause recording for a period of time (e.g. to skip commercial advertisements), press the **REC** button while you are watching the service being recorded. A "Recording Control" window will be displayed, as shown below.



You can perform the following functions;

- Pause recording: Press the **PAUSE** button to pause recording. When you are ready to resume recording, press the **PAUSE** button again.
- Stop recording: Press the **STOP** button to stop a recording before the set recording duration has elapsed.

To hide the recording control menu, press **EXIT**.

### NOTE

- You cannot pause recording if you are watching the program at a time-shifted position, as shown below.



## 2) Change Recording Options while Recording

You can change some of the recording options even after the recording has started. Press the **POP-UP** button and use the **DOWN** button to select "Recording Information", and then press **OK**.



The "Recording Information" window will now be displayed, containing one or two current recordings. Use the **UP/DOWN** buttons to select the recording you wish to change.



You can now change the following recording options;

- Duration: To change the duration, press the **LEFT** or **RIGHT** button.
- File Name: To change the file name press the **RED** button.
- File Lock: To change the lock status of the recording file, press the **GREEN** button.

See "Instant Recording" or "Add New Timer" sections earlier in this chapter for a detailed explanation of these recording options.

### NOTE

- You can stop the recording instantly by pressing the **STOP** button.
- You can view the service being recorded by pressing the **OK** button.
- The clock mark indicates the recording is due to a timer.
- Extending the duration of a timer so that it overlaps two existing timers at the same time point will cause a timer conflict (see "Timer Conflict" section next in this chapter).



### 3-6. Timer Conflict

The DP-P1 can record two programs simultaneously. If you attempt to record more than two programs simultaneously, a timer conflict warning message will be displayed. A timer conflict occurs in the following situations;

- A new timer overlaps with two existing timers at some point.
- A timer begins while two recordings are already in progress.
- A timer begins while a recording is already in progress on the same service.

#### NOTE

- When you set a new timer, the DP-P1 will only check for conflicts with existing timers. It will not check if the new timer conflicts with recordings started by the instant recording method, and will only do this check when the timer is ready to begin.

#### 1) New Timer Overlaps Two Existing Timers

You cannot add a new timer to record three programs at the same time. If you attempt to do so, a timer conflict dialog is displayed to show the conflicting timers, as shown below.



In order to add the new timer, you must delete one group of timers displayed in the list. Use the **LEFT/RIGHT** buttons to select a group of timers and press **OK** to delete that group. If you decide not to proceed, press **EXIT**, and the new timer will be cancelled.

#### NOTE

- You may find that re-organising your existing timers to remove overlaps where possible will solve many timer conflict problems.

## 2) Timer Overlaps Two Current Recordings

If a new timer begins while two recordings are already in progress, the following timer conflict dialog will be displayed:



In order to allow the timer to begin, you must stop one of the current recordings. Use the **UP/DOWN** buttons to select a recording and press **OK** to stop that recording. If you don't wish to stop either of the current recordings, press **EXIT** to cancel the pending timer.

### NOTE

- The new timer is given a higher priority than the existing recordings. Therefore, if you are unable to respond to the timer conflict dialog within 1 minute, the current recording which is scheduled to finish sooner will be stopped to allow the new timer to begin.

## 3) Timer Overlaps Current Recording on Same Service

If a timer overlaps a current recording on the same service, the following timer conflict dialog will be displayed:



In order to allow the timer to begin, you must stop the current recording by pressing the **OK** button. If you don't wish to stop the current recording, press **EXIT** to cancel the pending timer.

### NOTE

- The new timer is given a higher priority than the existing recording. Therefore, if you are unable to respond to the timer conflict dialog within 1 minute, the current recording will be stopped to allow the timer to begin.

## 4. EPG (Electronic Program Guide)

The EPG (Electronic Program Guide) is a table which displays current and upcoming TV programs. The DP-P1 stores up to 7 days of EPG data. The data can be provided in one of the following ways;

- Transmitted by the TV service broadcasters.
- Supplied by IceTV subscription service (requires internet connection – see “Ice Guide” section in Chapter 4).

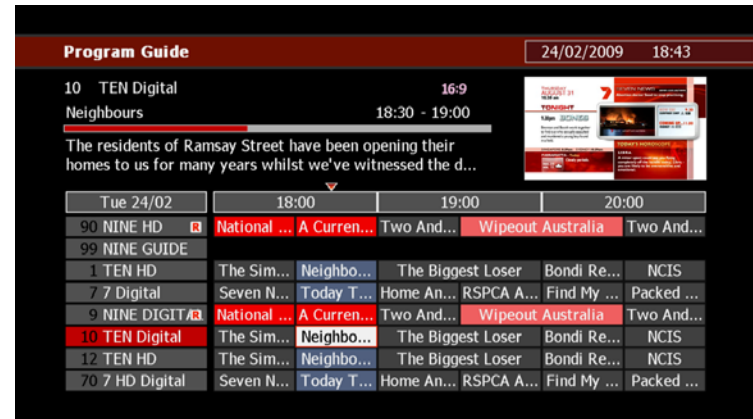
The data can be presented in two different styles, showing multiple services or showing a single service. To display the EPG, press the **GUIDE** button. The service you are currently viewing will continue to be shown in a small window in the top right corner of the screen. Press the **RED** button to swap between the two EPG styles. To hide the EPG, press the **GUIDE** button again, or press **EXIT**.

### NOTE

- The EPG always opens in the style you last used, with the current time or current program showing as the first entry.
- If you are currently viewing a service using the favorite group function, the EPG will only show the services contained in the current favorite group, and in the order you selected when you set it up (see “Favorite Group” section earlier in this chapter).
- When using the EPG data transmitted by the TV service broadcasters, the DP-P1 cannot provide a full 7-day EPG if some broadcasters do not provide this information.

### 4-1. EPG with Multiple Services

This EPG shows multiple services simultaneously in a timeline format. Services are listed vertically in the left column, and their corresponding programs appear in the same row underneath the appropriate time columns. Each program title is contained in a cell, and the position and width of each cell indicates the program’s scheduled broadcast time and duration. The program you are currently viewing is shaded in medium blue, and programs currently broadcasting on other services are shaded in light blue. The upper left section of the screen displays detailed information for each program, including scheduled start and finish times and program synopsis.



Use the **UP/DOWN/LEFT/RIGHT** buttons to move the cursor around the screen. If you move beyond the limits of the table, the **UP/DOWN**

buttons will scroll through any additional services, and the **LEFT/RIGHT** buttons will scroll through earlier and later timeslots.

You can also move rapidly through the timeslots, as follows;

- Jump forward 24 hours: press the **YELLOW** button.
- Jump backward 24 hours: press the **GREEN** button.
- Jump to the current timeslot or program: press the **BLUE** button.

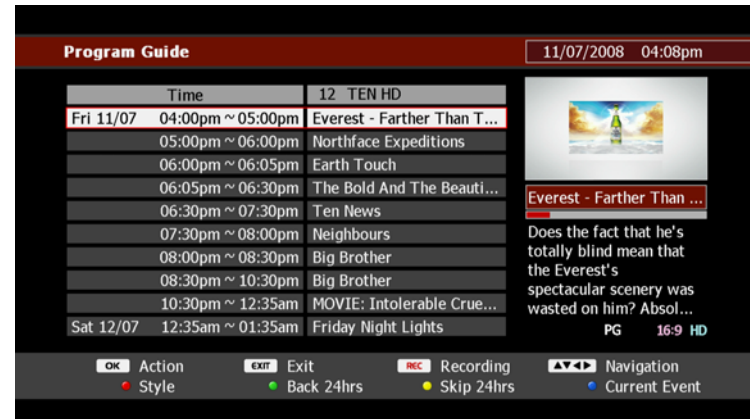
To view the full synopsis of a program, press the **ⓘ** button. To hide the full synopsis, press the **ⓘ** button again, or press **EXIT**.

#### NOTE

- The EPG can display up to 3 hours of historical data i.e. programs which have already finished screening. However the DP-P1 can only begin storing this data from the moment you turn it on.
- 8 services or 12 events EPG are displayed without help box. Help box can be hide in the OSD menu.

## 4-2. EPG with Single Service

This EPG shows only one service at a time in a list format. The right column contains the program name, and the left column displays the corresponding scheduled broadcast start and finish times. The program currently being broadcast is shaded in medium blue. The lower right section of the screen displays detailed information for each program, including program synopsis.



Use the **LEFT/RIGHT** buttons to view the data for the previous or next service respectively. Use the **UP/DOWN** buttons to move the cursor through the programs. If you move beyond the limit of the table, the **UP/DOWN** buttons will scroll through earlier and later timeslots. You can also move rapidly through the timeslots, as follows;

- Jump forward 24 hours: press the **YELLOW** button.
- Jump backward 24 hours: press the **GREEN** button.
- Jump to the current timeslot or program: press the **BLUE** button.

To view the full synopsis of a program, press the **ⓘ** button. To hide the full synopsis, press the **ⓘ** button again, or press **EXIT**.

#### NOTE

- Historical EPG data is limited to 3 hours (see previous section).

## 4-3. Service Change and Recording

The procedure for changing service and setting timers differs, depending on your chosen setting for “EPG Action” in the Preference menu (see “EPG Action” section in Chapter 9).

### 1) Service Change

To change services, perform the appropriate procedure as follows;

- For EPG Action = “Change Svc”, place the cursor on any program scheduled on your desired service (current or future program).
- For EPG Action = “Set Timer”, place the cursor on the program currently broadcasting on your desired service (shaded light blue).

Now press the **OK** button. The service showing in the small window will be changed accordingly.



### NOTE

- If two programs are being recorded simultaneously, the number of services you can view will be limited. Services which are unavailable for viewing will be shaded in dark grey.

### 2) Instant Recording

To instantly begin recording a program currently broadcasting, place the cursor on any current program (those shaded light blue or medium blue) and press the **REC** button. The program will now be shaded pink, and an 'R' icon will be displayed alongside the service name to indicate that the service is being recorded.



- The recording will automatically stop when the scheduled finishing time of the program is reached, plus any padding which may be applied (see “Soft Padding” section in Chapter 9).

### 3) Set timer

To set a timer for a future program, perform the appropriate procedure as follows;

- For EPG Action = “Change Svc”, place the cursor on your desired program and use the following functions;
  - To set a recording timer: Press the REC button. The program will now be shaded red.
  - To set a viewing timer: Press the PLAY button. The program will now be shaded blue.
  - To delete an existing timer: Press the STOP button. The program will now return to the normal grey shading.
- For EPG Action = “Set Timer”, place the cursor on your desired program. Press **OK** to set a recording timer. The program will now be shaded red. A second press of the **OK** button will set a viewing timer, and the program will now be shaded blue. A third press of the **OK** button will delete the timer and return the program to the normal grey shading.

#### NOTE

- When EPG Action = “Set Timer”, the **REC**, **PLAY** and **STOP** buttons can still be used to set and delete timers.
- Timers set via the EPG are created with a recurrence setting of “Once”. You must edit the timer if you wish to change the recurrence e.g. for a weekly timer.



### 4) Edit timer

To edit an existing timer, place your cursor on your desired timer and perform the appropriate procedure as follows;

- To edit a recording timer, press the **REC** button.
- To edit a view timer, press the **PLAY** button.

This will open the “Edit Timer” window. You can now make your desired changes to the timer (see “Edit Timer” section earlier in this chapter).

#### NOTE

- You can create and edit a timer quickly by pressing the **REC** button twice for a recording timer or the **PLAY** button twice for a view timer.
- If a program is only partially covered by a timer, it is shaded in pink for a recording timer or pale blue for a view timer.

# 6. File Playback

This chapter covers all functions regarding playing multimedia content. The DP-P1 can play movie, music and photo files from the following storage devices;

- internal hard disk drive (HDD).
- USB storage devices e.g. external HDDs.
- memory cards.
- shared folders on a networked PC.
- networked storage devices e.g. NAS.
- other beyonwiz products set up as a WizPNP server.

To enter File Playback mode, press the **FILE PLAY** button. To return to the previous operation mode (e.g. STB/PVR or Setup), press the **EXIT** button.

## 1. Exploring Contents

The File Playback menu is structured in three parts; as follows;

- Device menu: A vertical menu on the left side of the screen where you select the device where the content is stored.
- Content menu: A horizontal menu along the top of the screen where you select the type of content to play.
- File list: A list in the centre of the screen where you can view and select files and folders.

The following picture shows the File Playback menu and illustrates the structure;





### 1) Step 1: Select Content Type

Use the **UP/DOWN** buttons to select the type of storage device you wish to access, as follows:

- **HDD:** This is the internal hard disk drive. It contains two pre-set folders, as follows;
  - recording: Stores your recorded TV and Radio programs.
  - contents: Stores other media files you have transferred onto the internal HDD from external sources.

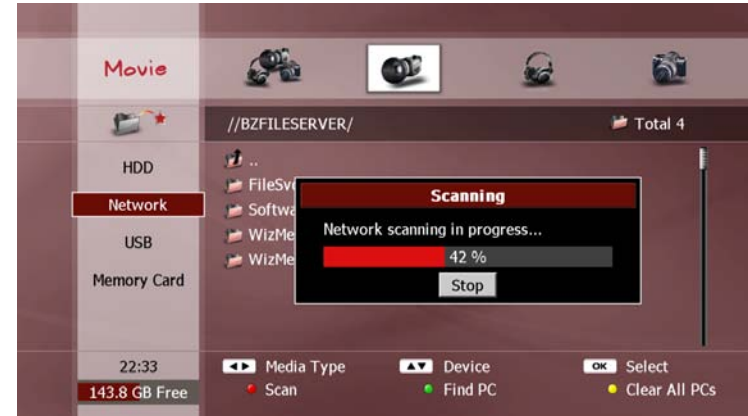
You can create additional folders on the internal HDD to organise your media files (see “Add Folders” section in Chapter 7).

- **Network:** This will show the following networked devices;
  - PCs connected to your home network.
  - Networked storage devices e.g. NAS.
  - WizPNP servers.

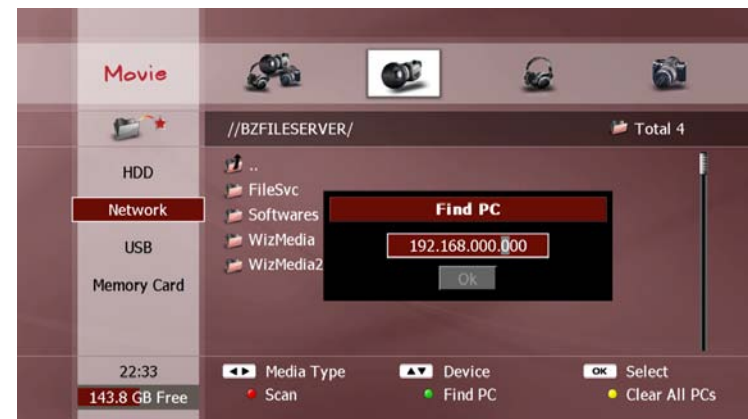
#### NOTE

- Ensure that the PC you wish to access has at least one shared folder set up to allow access and to share contents.
- For WizPNP servers to be visible, you must enable the WizPNP Client function (see “WizPNP” section in Chapter 4).

To scan and update the list of PCs connected to your home network, press the **RED** button.



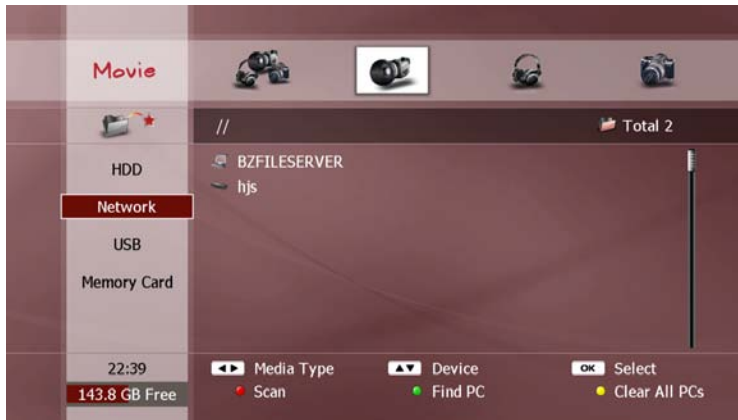
You can also scan for a specific network device. Press the **GREEN** button, enter the IP address of the device and select “OK”.





## File Playback

The networked devices are shown with icons to identify the type of device. A PC icon indicates a PC and a set-top box icon indicates a WizPNP server, as shown in the following screenshot;

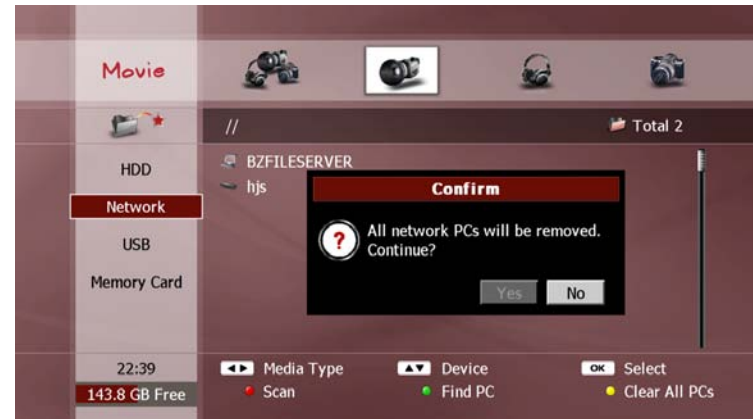


- USB: This will show all USB devices currently connected to the DP-P1.
- Memory Card: This will show all memory cards currently inserted into the DP-P1.

The top icon of the left menu (i.e. above “HDD”) represents a playlist function. This will be explained in the “Playlist” section later in this chapter.

### NOTE

- If there is no network device listed on the screen after scanning, check the network connections and make sure the device is set and configured properly.
- You can clear the list of network devices by pressing the **YELLOW** button and selecting “Yes”.



- USB devices must be compatible with the USB 2.0 standard.
- When you enter File Playback mode, the device selected is always the device you last used.

**⚠ WARNING**

- Each USB port can supply a maximum of 500mA to the external device. Connecting devices consuming more than 500mA can damage the DP-P1 if there is no additional power supplied to the USB device.
- The USB device should be detached properly to prevent the DP-P1 experiencing any unstable operation or damage. Press the **RED** button to detach the selected USB device properly.



## 2) Step 2: Select Content Type

Use the **LEFT/RIGHT** buttons to select the type of content you wish to play, as follows;

- All media icon: This will show all media files contained in the selected device.
- Video camera icon: This will show only the video files contained in the selected device.
- Headphones icon: This will show only the audio files contained in the selected device.
- Still camera icon: This will show only the photo files contained in the selected device.

### NOTE

- When you enter File Playback mode, the content type selected is always the content type you last used.

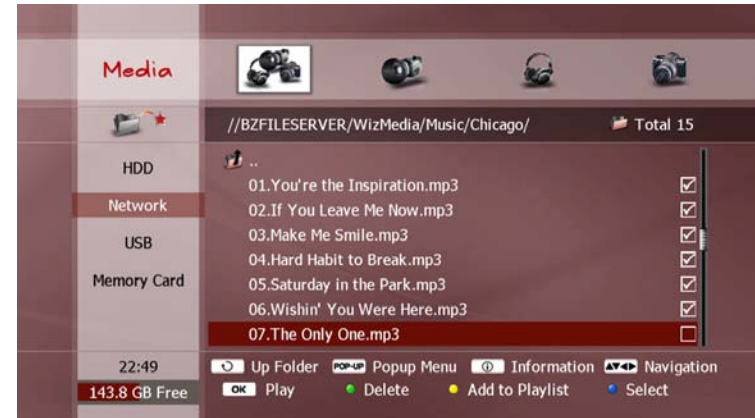
### 3) Step 3: Select File(s)

You must now select the file(s) you wish to play. Press the **OK** button to enter the File list. Locate the file(s) you wish to play by using the following functions;

- **UP/DOWN** buttons: Selects the previous or next folder or file in the list.
- **CH+/CH-** buttons: Jumps to the previous page or next page of folders and files.
- **UP FOLDER** button: shows the contents of the parent folder.
- **OK** button (when folder selected): shows the contents of the selected folder.
- **OK** button (when file selected): plays the selected file (see next section "Contents Playback" for more information).



To choose a particular selection of files, select a desired file and press the **BLUE** button. A tick will appear in the box alongside the selected file. Repeat this procedure for the remainder of your selection.



Press the **OK** button to begin playback of the selected files. Any files without a tick alongside them will be skipped.

### NOTE

- To change to a different storage device, you must first exit from the File list by pressing the **EXIT** button.
- You can change the content type while you are exploring in the File list by using the **LEFT/RIGHT** buttons i.e. there is no need to exit from the File list.
- If you accidentally select the wrong file with the **BLUE** button, pressing the **BLUE** button a second time will remove the tick.

## 2. Contents Playback

### 2-1. Movie Playback

To play a movie, locate your chosen video file (see previous section “Exploring Contents”) and press the **OK** button.



During playback, you can use the following functions:

- **PREV** button: Jumps to the previous file in the File list.
- **NEXT** button: Jumps to the next file in the File list.
- **STOP** button: Stops playback and returns to the File list.

When playback reaches the end of the video file, the next file in the File list will automatically begin playing.

#### NOTE

- Some video files will not play if the content is in a format not supported by the DP-P1.
- It may take a few seconds for a video file to start playing, depending on the content format.

## 1) Trick Mode

During playback, the following trick mode operations are available;

- **PAUSE** button: Freezes the picture until you press **PAUSE** a second time, or the **PLAY** button.
- **REW** button: Plays backwards at x2 speed. The rewind speed will increase with each additional press of this button, to x4, x8, x16 and x32 speed.
- **FF** button: Plays forward at x2 speed. The play speed will increase with each additional press of this button, to x4, x8, x16 and x32 speed.
- **SLOW FWD** button: Plays forward in slow motion at x1/2 speed. The play speed will decrease with each additional press of this button, to x1/4, x1/8, x1/16 and x1/32 speed.
- **PLAY** button: Reverts back to normal playback speed after using any of the above trick-modes.

The current trick-mode operation will be displayed on the screen.

You can also skip or jump to a different position in the video file, as follows;

- **LEFT** button: skip backward 15 seconds.
- **RIGHT** button: skip forward 15 seconds.
- **UP** button: jump forward 10% of the total length of the file.
- **DOWN** button: jump backward 10% of the total length of the file.

A progress bar will briefly appear when you perform any skip or jump.

A red position marker shows your current position in the file



You can also display the progress bar at any time by pressing the **OK** button. To hide the progress bar, press the **OK** button again, or **EXIT**.

## NOTE

- The trick mode operation cannot always be supported as it depends on the content format.

## 2) Bookmark

Bookmarks can be placed at any position in the video file. This enables you to return to a chosen position easily.



If necessary, use trick-mode or skip/jump functions to move to your desired position in the video file. To set a bookmark at this position, press the **RED** button. To play from the bookmarked position, press the **GREEN** button.

You can also set multiple bookmarks. Each press of the **RED** button will create a bookmark at the current position. To see the location of all bookmarks, open the progress bar by pressing the **OK** button. Each bookmark position is indicated by a dot mark above the progress bar.

Each press of the **GREEN** button will make playback jump to the next bookmark position. The progress bar shows which bookmark position you are currently playing from, indicated by a 'book' icon above the corresponding dot mark.





To display a list of all bookmarks placed, press the **BLUE** button. Use the **UP/DOWN** buttons to select a bookmark. To play from this position, press **OK**. To delete the selected bookmark, press the **YELLOW** button. You can hide the bookmark list by pressing the **BLUE** button again, or **EXIT**.



### NOTE

- The bookmark function is only available for beyonwiz recorded files.
- A maximum of 64 bookmarks can be set for each video file.
- A new bookmark cannot be set within 5 seconds of time position from an existing bookmark.

### 3) A-B Repeat

The DP-P1 can play a chosen section of the video file repeatedly.



Move the red position marker to your desired starting position by using the trick-mode functions (see "Trick Mode" section earlier in this chapter). Now press the **YELLOW** button. The progress bar will appear, and a yellow position marker "A" will be displayed to indicate the start position. Move the red position marker to your desired end position and press the **YELLOW** button again. Another yellow position marker "B" will be displayed to indicate the end position. Playback will immediately begin from position "A" to position "B" automatically. The **OK** or **EXIT** button can be used to hide the progress bar during the playback. This section will be played repeatedly until you press the **YELLOW** button a third time to cancel this function.

### NOTE

- The "A-B Repeat" function is not available for some video file formats.

#### 4) Subtitle

The DP-P1 can decode and display subtitles from a subtitle file. To play a movie with subtitles, ensure the subtitle file has the same name as the video file, and then copy the subtitle file into the same folder as the video file. Subtitles will now automatically be displayed when you begin playback of the video file. To change the subtitle settings, press the **SUBTITLE** button to display the "Subtitle Control" menu.



You can change the subtitle settings, as follows;

- Subtitle State: Press the **OK** button to switch between hiding and showing the subtitles.
- Subtitle Position: Use the **UP/DOWN** buttons to move the position of the subtitles up or down respectively.
- Time Sync: If the subtitles are not in time with the video, use the **LEFT/RIGHT** buttons to make the subtitles appear earlier or later respectively
- Font Size: Press **YELLOW** button to change the size of font.

To close the "Subtitle Control" menu, press the **SUBTITLE** button again, or the **EXIT** button.

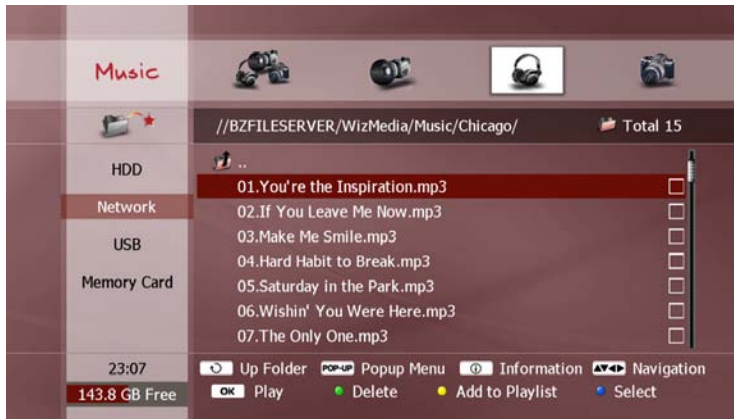
#### NOTE

- The DP-P1 supports the following subtitle formats: smi, sub and srt.



## 2-2. Music Playback

Music files are played in the same manner as video files. The same file selection functions, playback functions and trick-mode operations apply. See the previous sections “Exploring Contents” and “Movie Playback” for details.

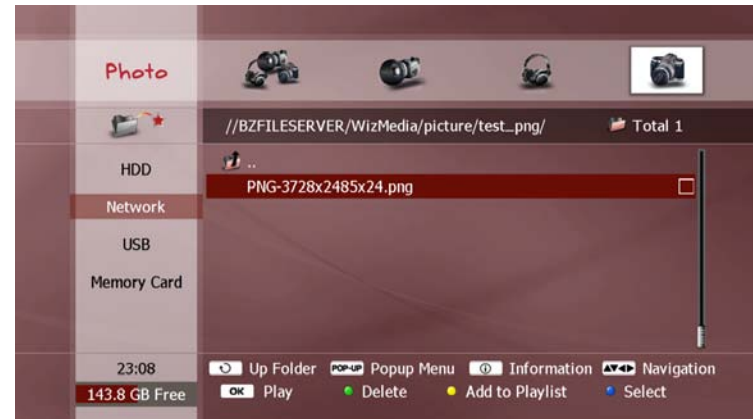


### NOTE

- Some audio files will not play if the content is in a format not supported by the DP-P1.
- If you wish to play a selection of audio files located in different folders or devices, use the Playlist function (see “Playlist” section later in this chapter).

## 2-3. Photo Playback

To view a photo, locate your chosen picture file(s) (see previous section “Exploring Contents”) and press the **OK** button.



The DP-P1 automatically begins a slide show. After a set duration, the next photo in the File list will be shown

During viewing, you can use the following functions;

- **LEFT** or **PREV** button: Jumps to the previous photo in the File list.
- **RIGHT** or **NEXT** button: Jumps to the next photo in the File list.
- **GREEN** button: Rotates the current photo 90° clockwise.
- **RED** button: Rotates the current photo 90° anti-clockwise.
- **PAUSE** button: Pauses the slide show.
- **PLAY** button: Resumes the slide show.
- **UP/DOWN** button: Increases or decreases the duration of each photo during the slide show (can choose from 1 second to 1 minute).
- **STOP** button: Stops the slide show and returns to the File list.
- **?** button: Swaps between hiding and showing the help bar.



#### NOTE

- The rotation function is not available for some picture file formats.

## 2-4. Playlist

The playlist is a personal collection of multimedia content that stores a temporary list of files. You can organize a separate playlist for each media content type: movie, music and photo.

### 1) Add File to Playlist

To create a playlist or add a file to the existing playlist, select your desired file(s) (see previous section "Exploring Contents") and press the **YELLOW** button. The selected file(s) are now added to the playlist.



#### NOTE

- Folders cannot be added to the playlist - you must select all the files inside the desired folder and add them to the playlist.

## 2) View Files in Playlist

To check the files in the playlist, select the 'Playlist' icon (above "HDD" in the Device menu) and press the **OK** button. The File list will now show all files currently in the playlist.



## 3) Play from playlist

To play the playlist, select your desired file(s) (see previous section "Exploring Contents") and press the **OK** button. Playback occurs in the same manner as detailed in the corresponding "Playback" section earlier in this chapter.

## 4) Remove File from Playlist

To remove a file from the playlist, select the unwanted file(s) (see previous section "Exploring Contents") and press the **GREEN** button. The selected file(s) are now removed from the playlist.



This page intentionally left as blank.

## 7. File Management

The DP-P1 has several functions to help you organise your media files.

These functions allow you to;

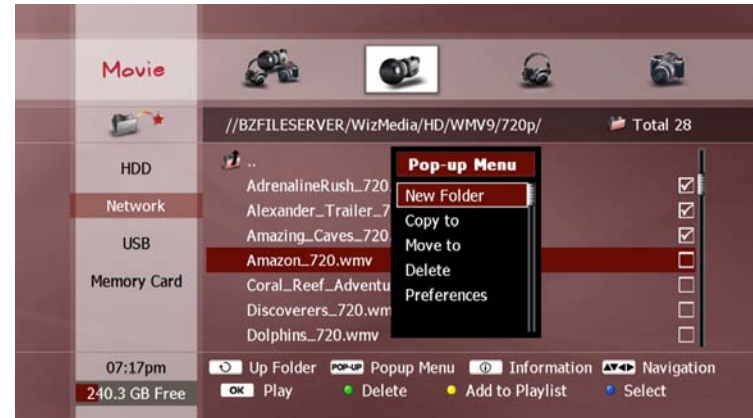
- (i) create folders on the internal hard disk drive (HDD).
- (ii) rename and delete files and folders.
- (iii) backup your media files to a PC or external storage device.
- (iv) delete or move files to a PC or external storage device to free up space on your internal HDD.
- (v) transfer media files from your PC or external storage device to the DP-P1's internal HDD.

These functions are only available for the following devices;

- the internal hard disk drive (HDD).
- a networked PC or storage device.
- a USB storage device

### 1. Add Folder

In File Play mode, display the File list where the new folder is to be created (see “Exploring Contents” section in Chapter 6). Press the **POPUP** button to display the “Pop-up Menu” window. Press the **OK** button to select “New Folder”.



Use the “Keyboard Input” pop-up window to enter your desired name (see “On-screen Keyboard” section in Chapter 4).

#### NOTE

- You cannot create new folders alongside the “recording” and “contents” folders at the root level of the internal HDD.
- You can create a new folder during setting up a move or copy function (see “Backup” sections later in this chapter).
- To create new folders in a networked PC, ensure that your PC user account has write permissions for the desired location.

## 2. Delete

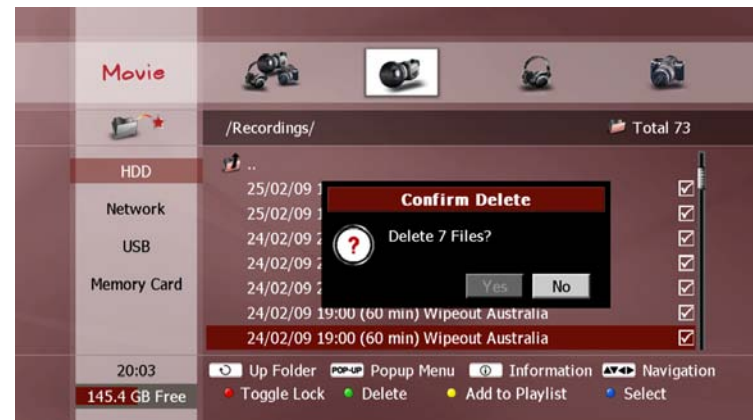
To delete files or folders in a storage device, select the unwanted file(s) or folder(s) in the File list (see “Exploring Contents” section in Chapter 6). Press the **POPUP** button to display the “Pop-up Menu” window. Press the OK button to select “Delete” and press the **OK** button.



A pop-up dialog will be displayed to confirm the deletion. Use the **LEFT/RIGHT** buttons to select “Yes” and press **OK**. If you decide to keep the file, select “No” and press **OK** to cancel the delete function, or press **EXIT**.

### NOTE

- You can press the **GREEN** button a second time to confirm the delete function, instead of selecting “Yes”.
- You can only delete folders which are empty. If you wish to delete a folder with contents, you must delete all the files from the folder first.
- You cannot delete a file which is currently being recorded (shown with an “R” icon). You must stop the recording first (see “Recording Control” section in Chapter 5).
- To delete a file or folder in a networked PC, ensure that your PC user account has write permissions for their location.
- You cannot delete the pre-set “recording” and “contents” folders in the internal HDD.



## 3. Auto Delete

To set automatic deletion function to automatically delete unwanted recording files that are older than the specified time. Press the **POPUP** button to display the “Pop-up Menu” window. Press the **OK** button to select “Auto Delete” and press the **OK** button. Use the **LEFT/RIGHT** buttons to select one of the following options:

- Never: Set not to delete.
- After X days: Delete after days you set.

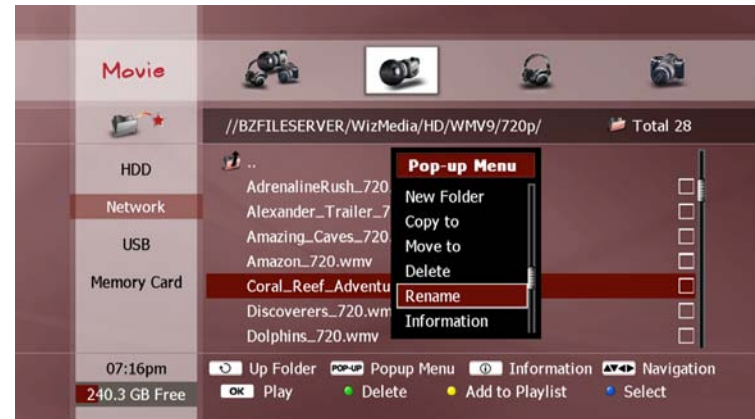


### NOTE

- Auto Delete function applies only for the recording files.

## 4. Rename

To rename a file or folder, select a file or folder in the File list (see “Exploring Contents” section in Chapter 6). Press the **POPUP** button to display the “Pop-up Menu” window. Press the **OK** button to select “Rename” and press the **OK** button.



Use the “Keyboard Input” pop-up window to edit the file name (see “On-screen Keyboard” section in Chapter 4).

### NOTE

- You cannot rename more than one file to have the same name at the same time, so the “Rename” menu item will be disabled if you use the **BLUE** button to select more than one file.
- You cannot rename the pre-set “recording” and “contents” folders.



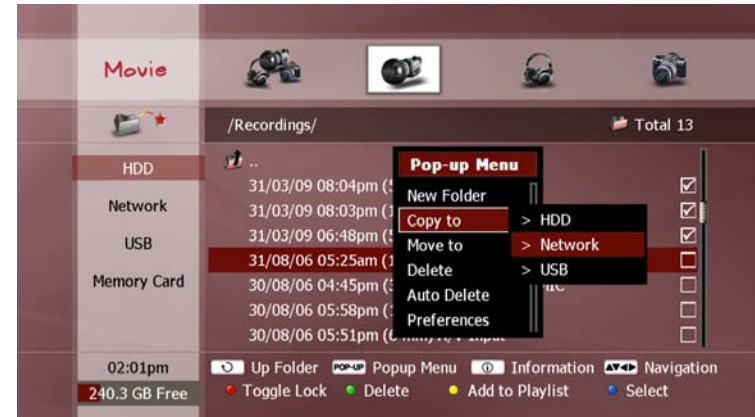
## 5. Copy / Move

To copy or move files to or from the DP-P1, select the desired file(s) in the File list (see “Exploring Contents” section in Chapter 6). Press the **POPUP** button to display the “Pop-up Menu” window. Press the **OK** button to select “Copy to” or “Move to” and press the **OK** button.



The following options will be displayed alongside the window, as follows:

- HDD: Select the internal HDD.
- Network: Select a networked PC or storage device.
- USB: Select a USB storage device.



Use the **UP/DOWN** buttons to select the type of storage device for your desired destination and press the **OK** button. A pop-up browser window will appear.



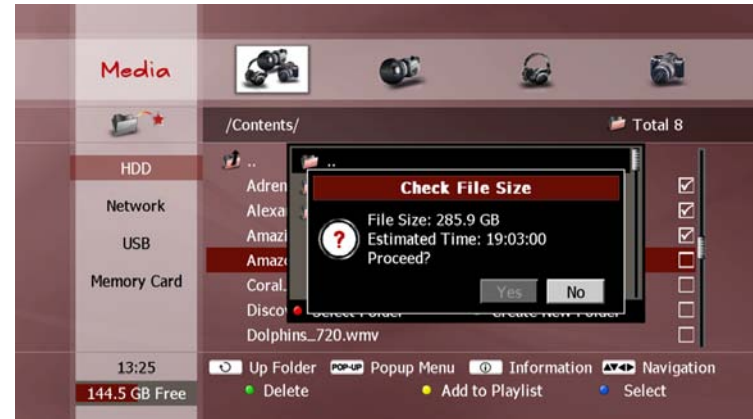


Use the **UP/DOWN** buttons to select a device and press the **OK** button (only for “Network” and “USB” device types).

Now use the following functions to set your destination folder;

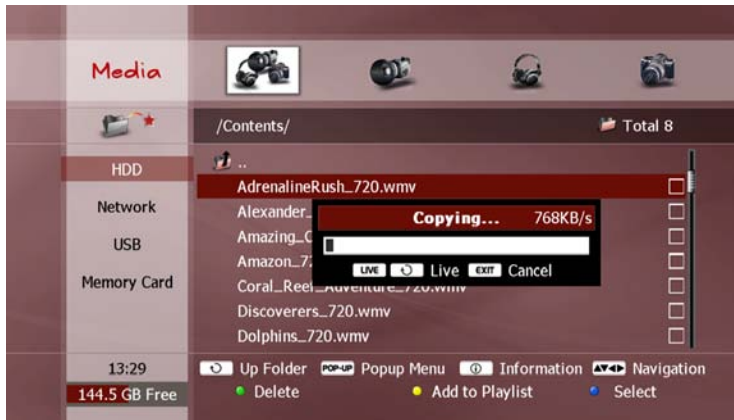
- **UP/DOWN** buttons: Select the previous or next folder in the list.
- **OK** button: Show the folders inside the selected folder.
- **RED** button: Set the selected folder as the destination folder.
- **GREEN** button: Create a new folder alongside the currently shown folders. Use the “Keyboard Input” pop-up window to enter your desired name (see “On-screen Keyboard” section in Chapter 4).

Once you have set your destination folder with the **RED** button, a “Check File Size” pop-up dialog will be displayed to confirm the copy or move function. The file size and estimated time information is displayed, as follows;



Use the **LEFT/RIGHT** buttons to select “Yes” and press **OK**. If you decide to cancel the copy or move function, select “No” and press **OK**, or press **EXIT**.

Once you have confirmed the copy or move function, a progress bar indicates the status, as shown below;



While the copy or move function is in progress, you can select the following functions;

- **LIVE** or **RECALL** buttons: Return to STB/PVR mode to watch live TV.
- **EXIT** button: Cancel the copy or move function.

#### NOTE

- When copying or moving a beyonwiz recorded file to the internal HDD, only the "recording" folder will appear in the browser window.
- When copying or moving any other media file to the internal HDD, only the "contents" folder will appear in the browser window.
- To copy or move a file to a networked PC, ensure that your PC user account has write permissions for the selected destination.
- USB storage devices should be formatted with the DP-P1 (see "Format USB Storage" section in Chapter 9).
- You can also backup beyonwiz recorded files from the DP-P1 to a networked PC by using a software application "WizFX" installed on your PC. Visit the beyonwiz website ([www.beyonwiz.com.au](http://www.beyonwiz.com.au)) to download the "WizFX" software application and user instructions

## 6. Edit Recording File

You can edit a recorded file. Editing allows you to;

- (i) remove commercial advertisements from a TV recording.
- (i) remove soft padding from your recorded programs (see “Soft Padding” section in Chapter 9).
- (iii) retain only a particular section of a recorded program.

Locate the desired file and begin playback (see Chapter 6 “File Playback”). Move the red position marker to the start of the section you wish to edit by using the trick-mode functions (see “Trick Mode” section in Chapter 6). Now press the **YELLOW** button. The progress bar will appear, and a yellow position marker “A” will be displayed to indicate the start position. Move the red position marker to the end of the section you wish to edit and press the **POP-UP** button. The “Edit menu” pop-up window will be displayed, as follows;



Select one of the following functions;

- Delete A->B: Cut out the selected section. The rest of the file is retained.
- Keep A->B only: Retain only the selected section. The rest of the file is deleted.
- Copy A->B to a new file: Copy only the selected section, and create a new file for it. Use the “Keyboard Input” pop-up window to enter your desired name (see “On-screen Keyboard” section in Chapter 4).
- Cut out A->B: Cut out the selected section, and create a new file for it. Use the “Keyboard Input” pop-up window to enter your desired name (see “On-screen Keyboard” section in Chapter 4).

A progress bar indicates the status of the edit function. You can cancel the edit function by pressing the **EXIT** button at any stage.



## 8. Internet Service

The DP-P1 is designed to support various Internet services. Press **wizTV** button to access the services.

You can get the latest information by visiting our website,

**wiztv.com.au**

**www.beyonwiz.com.au**

This page intentionally left as blank.

## 9. Advanced Setup

This chapter describes how to configure the Miscellaneous (“Misc.”) and System categories of the setup menu. These categories are configured in the same manner as described in the “How to Change Configuration” section in Chapter 4.

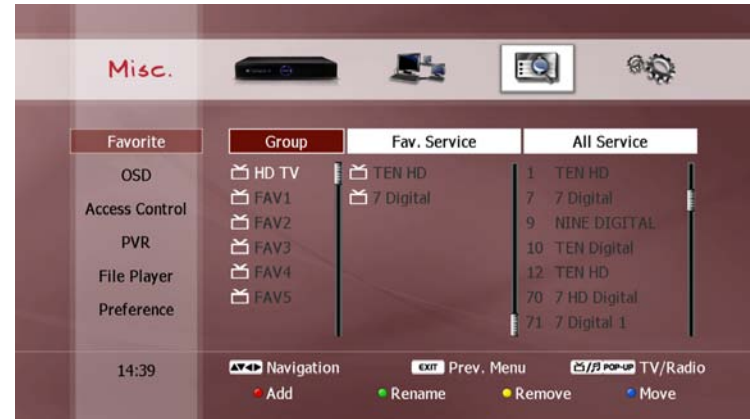
### 1. Miscellaneous

#### 1-1. Favorite

You must create favorite service groups in order to use the favorite feature (see “Favorite Group” section in Chapter 5). The Favorite menu consists of three columns: “Group”, “Fav. Service” and “All Service”. Enter the Favorite menu by pressing the **OK** button. You can now use the **LEFT/RIGHT/UP DOWN** buttons to move the cursor between the three columns, and down to any item listed in the columns.

##### 1) Group

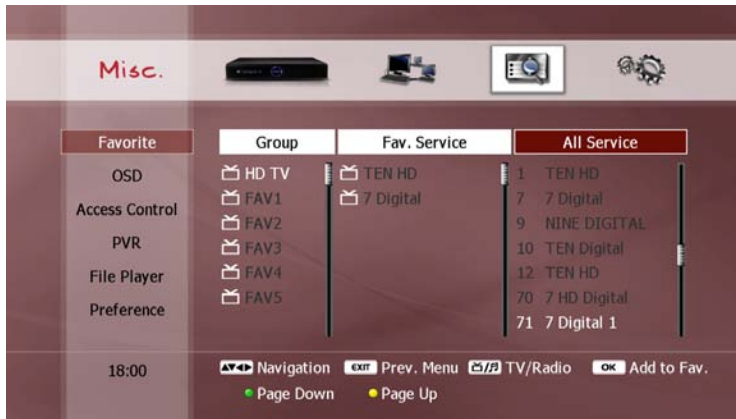
The first column contains the list of your favorite groups. You can create up to 20 groups. A favorite group cannot contain both TV services and radio services, The type of the group is determined by the first service placed in it, and is indicated by the ‘TV’ and ‘RADIO’ icons alongside the group name. Place the cursor on the “Group” column, and then you can perform the following functions;



- Add group: To create a new group, press the **RED** button to display the “Keyboard Input” pop-up window and enter your desired name (see “On-screen Keyboard” section in Chapter 4).
- Rename group: Select the group you wish to rename and press the **GREEN** button to display the “Keyboard Input” pop-up window and enter your desired name.
- Delete group: Select the group you wish to delete, and then press the **YELLOW** button. A pop-up dialog will appear to confirm the deletion. Use the **LEFT/RIGHT** buttons to select “Yes” and press **OK**. If you decide to keep the group, select “No” and press **OK**, or press **EXIT**.
- Move group: Select the group you wish to move, and then press the **BLUE** button. Use the **UP/DOWN** buttons again to move the group to your desired position in the list. Press the **BLUE** button again to accept the change, or **EXIT** to cancel the change.

## 2) All Service

The third column shows all services that you can access. This list shows either all the TV services, or all the radio services.

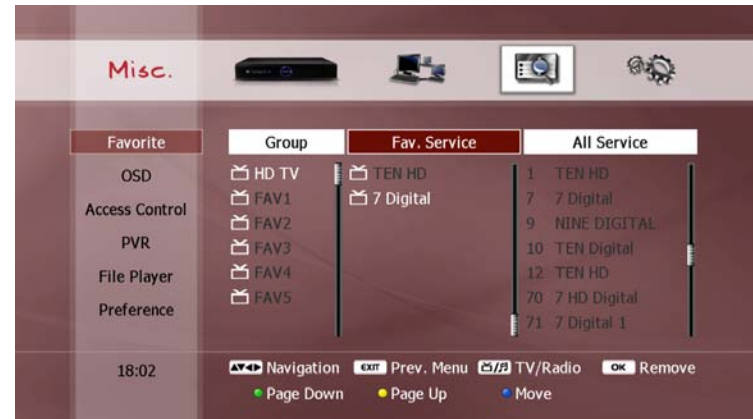


Ensure the favorite group you wish to add services to is selected in the "Group" column. Place the cursor on the "All Service" column, and then you can perform the following functions;

- Add service to group: Select the service you wish to add, and then press the **OK** button. This service should now appear in the second column.
- Change service list: Press the **TV/RADIO** button to switch between displaying the TV services list and the radio services list.
- Page down/up: Use the **GREEN** and **YELLOW** buttons to show the next or previous page of services.

## 3) Favorite Service

The second column displays the services belonging to the favorite group selected in the first column.



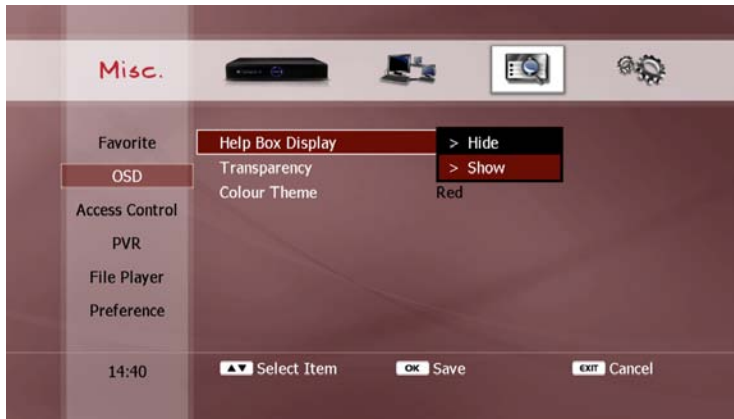
Place the cursor on the "Fav. Service" column, then you can perform the following functions;

- Delete service from group: Select the service you wish to delete, and then press the **OK** button. The service should disappear from the list.
- Move service in list: Select the service you wish to move, and then press the **BLUE** button. Use the **UP/DOWN** buttons again to move the service to your desired position in the list. Press the **BLUE** button again to accept the change, or **EXIT** to cancel the change.
- Page down/up: Use the **GREEN** and **YELLOW** buttons to show the next or previous page of services.

## 1-2. OSD

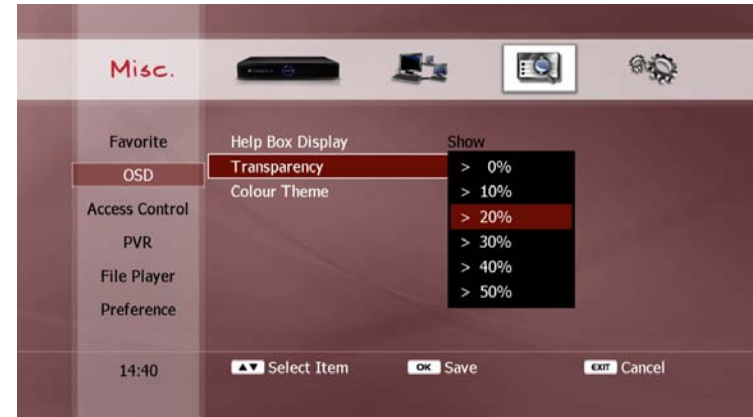
### 1) Help Box Display

You can hide the help box that is displayed with the service list. This will extend the service list window so that more services will be listed, without having to press the **RED** button each time (see “Change Service with Service List” section in Chapter 5). If you set this option to “Hide”, the help box does not appear when you press the **LIST** button.



### 2) Transparency

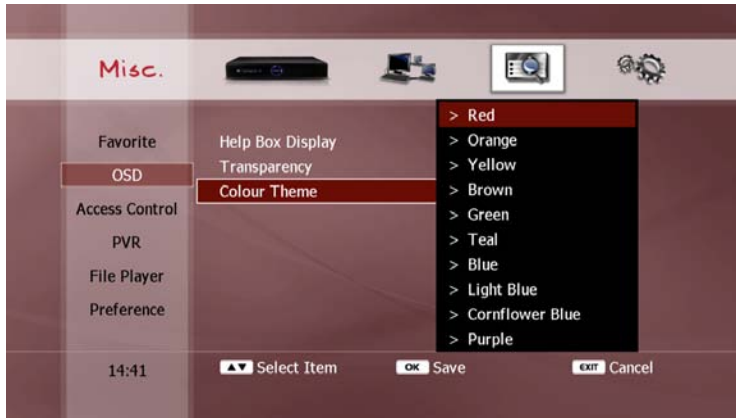
You can set the transparency of the on-screen display (OSD). This will change how much of the TV image you can see behind the pop-up messages which appear on your screen from time to time. You can select a value from 0% (solid windows) to 50% (highly transparent windows).





## 3) Colour Theme

You can choose between 10 colour themes for on-screen menus and information boxes.



## 1-3. Access Control

You can set a 4-digit PIN number to control access to certain set-up menus. After setting a PIN number, users must enter the PIN number to access the menu.

### 1) Set PIN Number

Press the **OK** button to open the "Change PIN Code" pop-up window, as shown below;



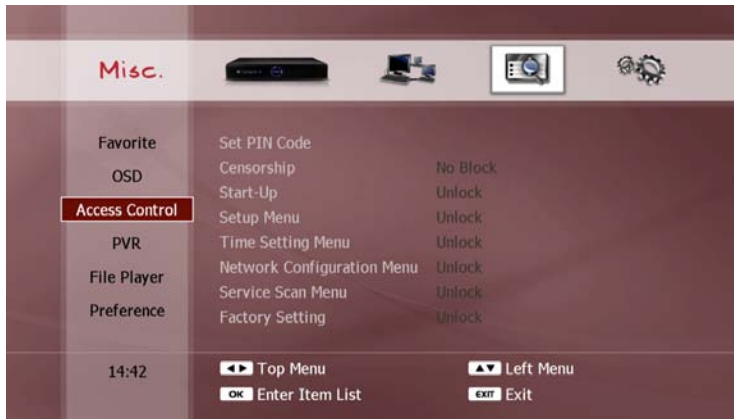
Use the **NUMERIC** buttons to enter the current PIN number, then your desired new PIN number, and then repeat your desired new PIN number to confirm it was entered correctly

### NOTE

- The default PIN number is 0000.

## 2) Access Control

Several functions can be configured to require PIN number entry, as follows:

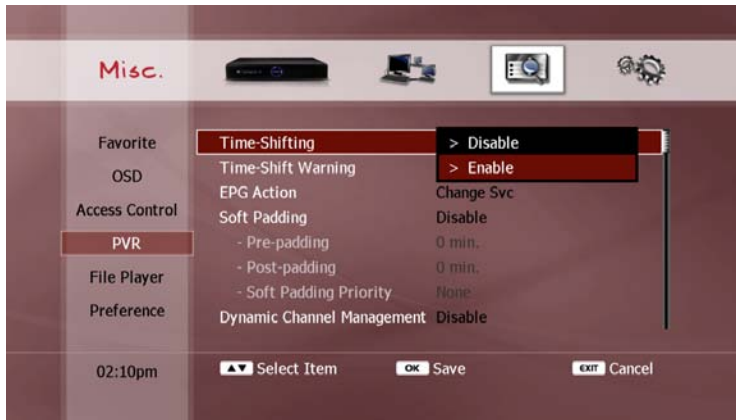


- Censorship: To view a program with a selected classification rating or higher.
- Start-up: Every time the DP-P1 is turned on.
- Setup Menu: To access to Setup menu.
- Time Setting Menu: To change the time and date settings.
- Network Configuration Menu: To change the network configuration.
- Service Scan Menu: To scan for services.
- Factory Setting Menu: To restore to the factory default settings.

## 1-4. PVR

### 1) Time-shifting

You can turn off the time-shift function to reduce the workload of the internal hard disk drive (HDD).



### NOTE

- To enable the time-shift function temporarily, press the **PAUSE** button while you are watching a live TV program. You can then use all the time-shift functions as described in the "Time-shifting" section in Chapter 5), including all the trick-mode operations.

### 2) Time-Shift Warning

You can have a warning message displayed if you are currently time-shifting and you attempt to perform an action which would delete the time-shift buffer, as follows;

- Changing to a different service.
- Entering File Play, Setup or WizTV modes.



### 3) EPG Action

You can control the action of the **OK** button when a future program (one not shaded light blue) is selected in the EPG (see “Service Change and Recording” section in Chapter 5). Select either of the following options;

- Change Svc: Pressing the **OK** button will change the service being viewed to the service corresponding to the selected program.
- Set Timer: Pressing the **OK** button will cycle between setting a recording timer, setting a view timer and deleting the timer for the selected program.



### 4) Soft Padding

You can automatically add additional time to the duration of your timers to allow for differences between the scheduled broadcast times and the actual broadcast times.

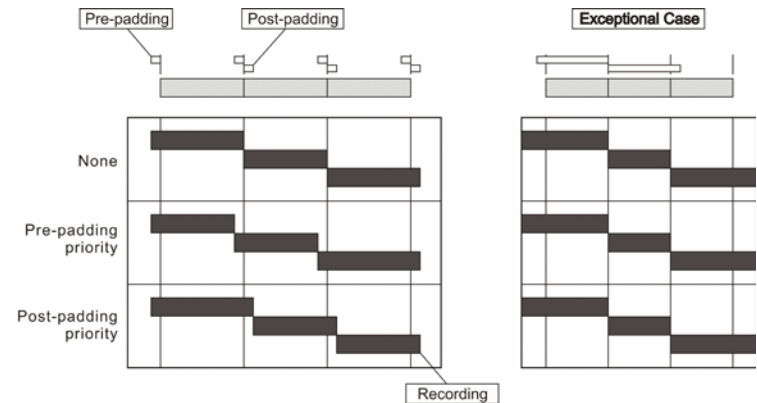


The following settings can be configured;

- Pre-padding: Adds the selected number of minutes of recording time prior to the scheduled starting time.
- Post-padding: Adds the selected number of minutes of recording time after the scheduled finishing time.

# Advanced Setup

- **Soft Padding Priority:** Determines how to resolve timer conflicts caused by the addition of pre-padding or post-padding. Select one of the following options:
  - **None:** The scheduled start and end times of a timer override the pre-padding and post-padding of a previous or following timer.
  - **Pre-padding:** The scheduled end time of a timer will be overridden by the pre-padding of a following timer.
  - **Post-padding:** The scheduled start time of a timer will be overridden by the post-padding of a previous timer.

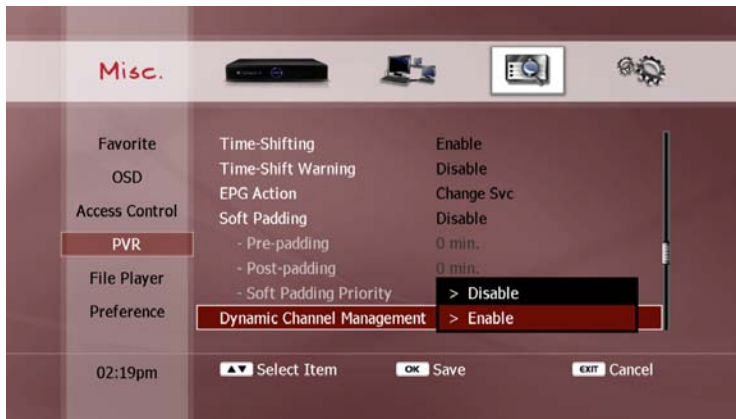


## NOTE

- If the soft-padding time is longer than the set period of a previous or following timer, the soft-padding will be ignored regardless of the "Soft Padding Priority" setting, as illustrated above.

### 5) Dynamic Channel Management

You can automatically update new services.



#### NOTE

- If DCM is enabled, newly added channels or deleted channels can be applied without a scan. If you deleted some channels manually, then it will automatically restore them. But manually renamed channels will be kept. Normally you can not detect any clue that indicates the DCM is there.

### 6) Skip for recordings

You can configure the skip function.

- Press the **LEFT/RIGHT** buttons to change the interval of skip.



#### NOTE

- Negative numbers indicate backwards skips.
- Press **OK** button to toggle the units between "sec"(seconds) and "%".
- The minimum interval of skip for contents is 5 secs or 2%

## 1-5. File Player

### 1) Resume Play

You can control the behaviour of the starting position for playback of files that have already been partially played. Select one of the following options;

- Disable: Always play from the beginning of the file.
- Ask: A pop-up dialog will ask whether or not to resume playback from your previous position in the file. Selecting "No" will begin playback from the beginning of the file.
- Always: Resume playback from your previous position in the file.



### NOTE

- Resume playback is only available for the last 32 files played.

### 2) Automatic Play Next

You can set automatic play function to automatically play next files in the file list.

### 3) Filter Default

You can set the default type of contents as Movies, Music, Photos or Media(all).

### 4) Skip for contents

You can configure the skip function.

- Press the **LEFT/RIGHT** buttons to change the interval of skip.
- Press **OK** button to toggle the units between "sec"(seconds) and "%".

### NOTE

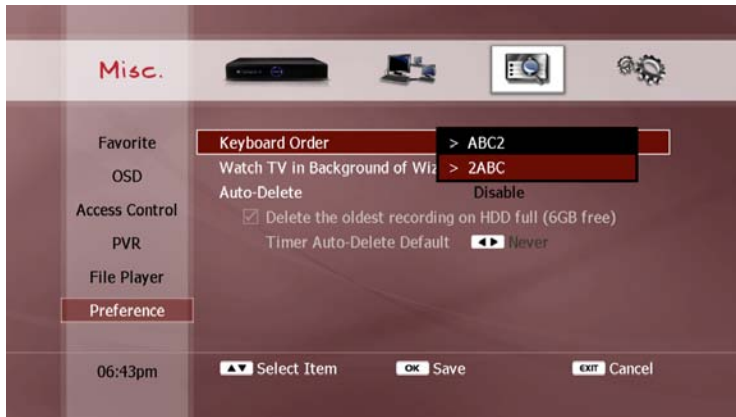
- Negative numbers indicate backwards skips.
- Press **OK** button to toggle the units between "sec"(seconds) and "%".
- The minimum interval of skip for contents is 5 secs or 2%

## 1-6. Preference

### 1) Keyboard Order

You can control the behaviour of the remote control keypad when using the NUMERIC buttons to enter letters and characters. Select one of the following options;

- ABC2: Cycle through the assigned letters and characters, then the assigned number with each press of the **NUMERIC** button.
- 2ABC: Cycle through the assigned number, then the assigned letters and characters with each press of the **NUMERIC** button.



### 2) Watch TV in Background of WizTV

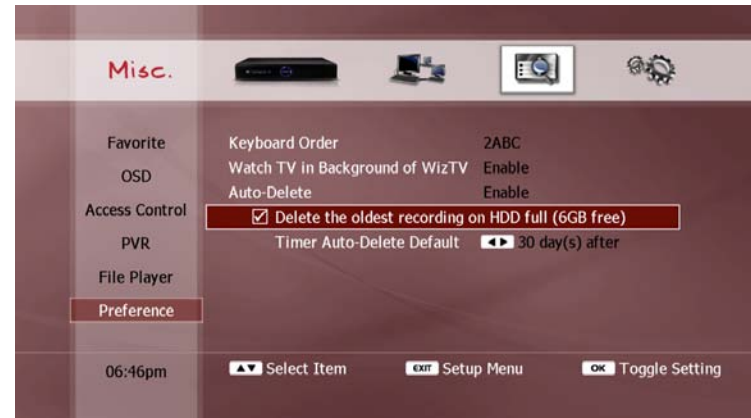
When using the WizTV internet service, you can set to watch TV in the background.

### 3) Auto Delete

You can set to enable or disable the automatic deletion function to automatically delete unwanted files that are older than the specified time. Select one of the following options.

You can configure the global options. This option is used in the timer or file list. Press the **OK** buttons to configure following options;

- Delete the oldest recording on HDD full.
- Delete a recording after days configured. Use **LEFT/RIGHT** buttons to set the days.





## 2. Management

You can upgrade or initialize your DP-P1 in this menu.

### 2-1. Firmware

#### 1) Firmware Information

This displays a pop-up window with the current system information, as follows;

- System identity number.
- Firmware version number.
- Loader version number.

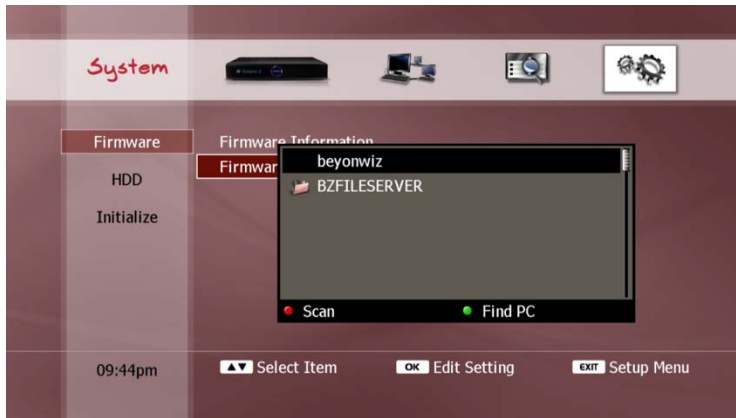


#### 2) Firmware Upgrade

You can upgrade your DP-P1 with the latest firmware. Please visit the beyonwiz website ([www.beyonwiz.com.au](http://www.beyonwiz.com.au)) for firmware information. To upgrade the firmware, download the latest version from the above website. The DP-P1 can upgrade to a firmware file stored on a networked PC, attached USB device, memory card.



Select the type of storage device where your firmware file is located and press the **OK** button. A pop-up browser window will appear.

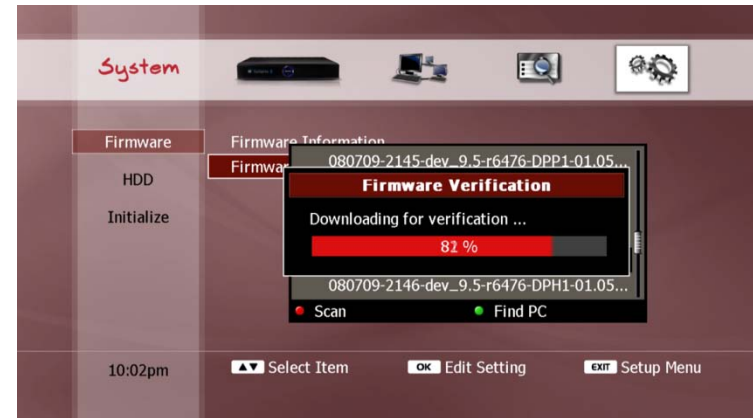


Use the **UP/DOWN** buttons to select a device and press the **OK** button (only for “Network” and “USB” device types).

Now use the following functions to locate your firmware file;

- **UP/DOWN** buttons: Select the previous or next folder in the list.
- **OK** button: Show the folders inside the selected folder.

Select the desired firmware file from the file list and press the **OK** button to start the upgrade process.



It takes several minutes to complete the upgrade. Ensure that your DP-P1 is NOT turned off until the upgrading process is completed.

#### NOTE

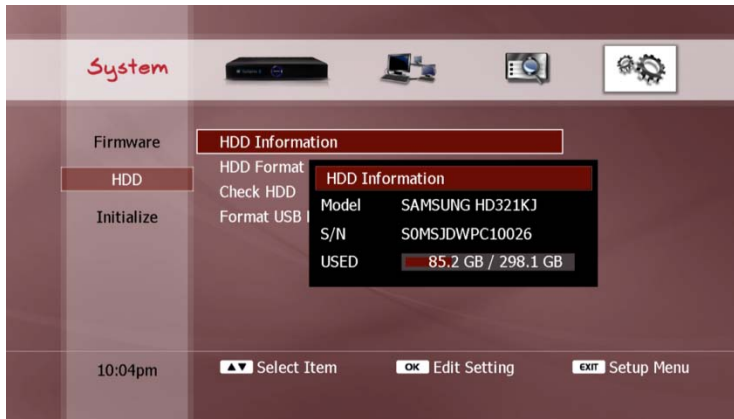
- If the firmware upgrade progress bar does not update when you upgrade using the Network option, check the network configuration of your PC and DP-P1.
- If you cannot see your desired network device in the browser window, use the **RED** or **GREEN** button to scan for devices (see “Select Device” section in Chapter 6).

## 2-2. HDD

### 1) HDD Information

This displays a pop-up window with the current internal hard disk drive (HDD) information, as follows:

- Model number.
- Serial number.
- Used space.



### 2) HDD Format

You can re-initialise (or format) the internal HDD. This will delete all files on the internal HDD. If you select this menu item with the **OK** button, a confirmation pop-up dialog will be displayed, as shown below.



Select "Yes" and press the **OK** button to proceed. To cancel the HDD format function, select "No" and press the **OK** button, or press the **EXIT** button. If you select "Yes", the DP-P1 will restart and format the internal HDD automatically.

### NOTE

It takes several minutes to complete the HDD format process. The front display panel shows the status. Ensure that your DP-P1 is NOT turned off until the formatting process is completed.

### 3) Check HDD

If the DP-P1 is turned off incorrectly, it is strongly recommended that you check the internal HDD. If you select this menu item with the **OK** button, a confirmation pop-up dialog will be displayed, as shown below.



Select "Yes" and press the **OK** button to proceed. To cancel the HDD check function, select "No" and press the **OK** button, or press the **EXIT** button.

#### NOTE

- When you turn the DP-P1 on after it is turned off incorrectly, a warning message asks you to check the onboard HDD.
- The HDD check process takes several minutes. During this process, the PVR functions are disabled and you can only view a TV service or listen to a radio service.



### 4) Format USB Storage

In order for the DP-P1 to be able to write files to a USB storage device, the USB device must be formatted first. Select the "Format USB HDD" menu with the **OK** button. A list of USB storage devices will be displayed.



Use the **UP/DOWN** buttons to select the device you wish to format and press the **OK** button.

#### **WARNING**

- If you format the USB storage device, all the data stored in the USB storage device will be erased.

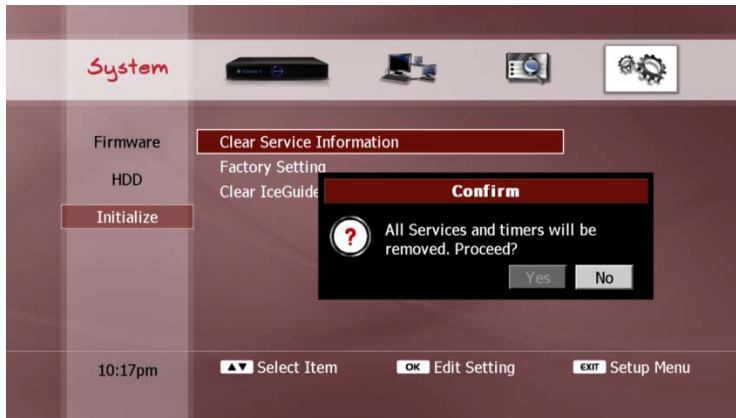
#### **NOTE**

- It takes several minutes to format a USB HDD.
- Even if the USB storage device is formatted with a PC, it should be re-formatted with the DP-P1.
- If you only want to play media files from your USB storage device, and you do not intend to copy or move media files from the DP-P1 onto your USB device, you do not need to format it with the DP-P1.

## 2-3. Initialize

### 1) Clear Service Information

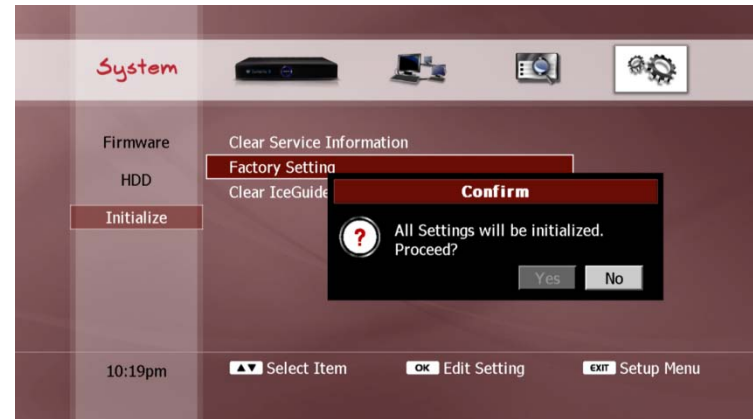
You can clear all the scanned services information. If you select this menu item with the **OK** button, a confirmation pop-up dialog will be displayed, as shown below;



Select "Yes" and press the **OK** button to proceed. To cancel the clear services function, select "No" and press the **OK** button, or press the **EXIT** button.

### 2) Factory Setting

You can restore the DP-P1 to its factory configuration. This will erase all setup information. If you select this menu item with the **OK** button, a confirmation pop-up dialog will be displayed, as shown below;



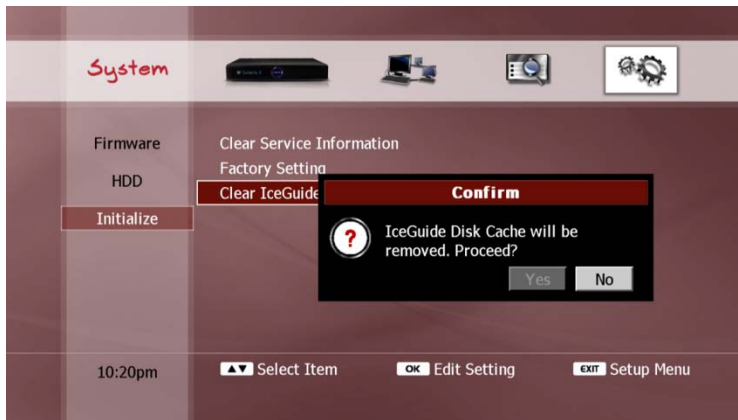
Select "Yes" and press the **OK** button to proceed. To cancel the factory setting function, select "No" and press the **OK** button, or press the **EXIT** button.

#### NOTE

- A factory reset will NOT delete any media files on the internal HDD.

### 3) Clear IceGuide Disk Cache

The EPG information from IceTV is stored on the internal HDD (see “Ice Guide” section in Chapter 4). You can clear the EPG information and reload the data from the IceTV server. If you select this menu item with the **OK** button, a confirmation pop-up dialog will be displayed, as shown below.



Select “Yes” and press the **OK** button to proceed. To cancel the clear IceGuide disk cache function, select “No” and press the **OK** button, or press the **EXIT** button

# 10. Troubleshooting Guide

Before contacting beyonwiz Technical Support, please check this Troubleshooting Guide and try all the suggested solutions for your problem. If the product does not work correctly after completing the following troubleshooting suggestions, please contact your local product distributor or service centre.

It is recommended that you check your product's firmware version in the Setup menu (Setup\Management\Firmware) and upgrade to the most recent firmware version, available from the beyonwiz website, [www.beyonwiz.com.au](http://www.beyonwiz.com.au), before troubleshooting.

Problem	Possible Solutions
No message is displayed on the front panel display or product has no power	<ul style="list-style-type: none"> <li>• Check the main power cable and ensure that it is plugged into a suitable power outlet.</li> <li>• Check that there is power available at the power outlet by plugging in another electrical appliance (e.g. a lamp).</li> </ul>
No picture	<ul style="list-style-type: none"> <li>• Make sure that the product is in Operating Mode.</li> <li>• Make sure that the AV Cables are securely connected to the TV.</li> <li>• Make sure that the antenna cable is correctly</li> </ul>

	<p>connected to the product.</p> <ul style="list-style-type: none"> <li>• Check the brightness level of TV.</li> <li>• Check that the channel is currently on air.</li> <li>• Check whether the TV is set to the correct input corresponding to the product's video output connections (e.g. AV1, Component, HDMI etc).</li> <li>• Has a Service Scan been performed?</li> <li>• Check that the product's video output settings are configured correctly to suit your display resolution. (Press the <b>TV-OUT</b> button on the Remote Control to advance through the various video output resolution options, or configure this via the Setup menu. (Setup\Configuration\A/V Output)</li> </ul>
Poor picture & sound quality	<ul style="list-style-type: none"> <li>• Has the antenna cable been connected to the correct port on the rear of the product?</li> <li>• Avoid positioning the unit near a mobile phone or microwave oven as these devices may cause interference.</li> <li>• Use a good quality 75ohm coaxial cable to connect the antenna to the product.</li> <li>• Check the signal strength and signal quality indicators on the product's onscreen display (by pressing the INFO button on the Remote Control) to ensure that the received signal</li> </ul>



	<p>strength and/or quality is adequate. If not, please contact an authorised antenna service agent or licensed contractor to seek advice concerning improving your TV reception.</p>
No sound, or poor sound	<ul style="list-style-type: none"> <li>• Check the Volume controls of the product, TV and other audio device/s.</li> <li>• Check the Mute status of the product, TV and other audio device/s.</li> <li>• Check that the audio output connections on the product have been connected to the correct input connectors on the TV and/or other audio device/s.</li> <li>• Check that the product's audio output settings configured in the Setup menu are correct. (Setup\Configuration\A/V Output)</li> </ul>
Remote control does not operate the DP-P1	<ul style="list-style-type: none"> <li>• To use the product with the supplied Remote control, the Remote control's infrared sender should be pointed directly towards the product's infrared receiver.</li> <li>• Check the remote control's batteries.</li> <li>• Ensure that the correct mode is selected on the Remote control i.e. <b>STB</b> mode if operating DP-P1 or <b>TV</b> mode if operating the TV.</li> <li>• If the Remote control range seems to be limited, check to ensure that the protective plastic film (for shipping protection) on the</li> </ul>

	<p>front panel of the DP-P1 has been removed.</p>
Remote control does not operate TV	<ul style="list-style-type: none"> <li>• To use the equipment with Remote control, the Remote control's infrared sender should be pointed directly towards the TV's Remote control receiver.</li> <li>• Check the battery of the Remote control.</li> <li>• Ensure that the correct mode is selected on the remote control i.e. <b>STB</b> mode if operating the DP-P1 or <b>TV</b> mode if operating the TV.</li> <li>• Has the Remote control been correctly programmed to operate your TV? (See page 7 of this Guide)</li> </ul>
Timers are not recording	<ul style="list-style-type: none"> <li>• Check to ensure that the timers have been set correctly.</li> <li>• Check whether more than two timers overlap.</li> <li>• Check whether the power supply to the product has been disconnected.</li> </ul>
I can't connect to my network via LAN	<ul style="list-style-type: none"> <li>• Check to ensure that the Ethernet (LAN) cable is connected to the correct port on the rear of the product.</li> <li>• Is the correct type of Ethernet cable being used for your network connection? (i.e. a "straight-through" or "crossover" cable?)</li> <li>• Have the LAN settings been correctly configured in the product's Setup Menu? (Setup\Network\Setting)</li> </ul>

	<ul style="list-style-type: none"> <li>• Check to ensure that the other devices on your network are configured correctly to connect with another network device.</li> </ul>
EPG data is not present in the Guide, or the EPG data in the Guide is incorrect for my region	<ul style="list-style-type: none"> <li>• Do you have subscription with an EPG data provider? (e.g. Ice TV)</li> <li>• Check with your provider to ensure that your subscription is current and that your account is correctly configured for your region.</li> <li>• Have you correctly configured the product with your provider's account details? (Setup\Network\Ice Guide)</li> <li>• Is the product correctly configured and connected to a network device that can regularly access the internet to receive EPG data from your provider?</li> </ul>
The picture looks squashed or too wide	<ul style="list-style-type: none"> <li>• Check whether the product has been configured to display the correct TV Aspect Ratio. (Setup\Configuration\A/V Output)</li> <li>• Check whether the TV has been configured to display the correct TV Aspect Ratio. (see your TV user guide for information)</li> </ul>
Unable to access Setup Menu options	<ul style="list-style-type: none"> <li>• Check whether system settings on the product have been locked with a PIN. (Setup\Miscellaneous\Access Control)</li> </ul>

Unable to use "trick mode" functions with live TV	<ul style="list-style-type: none"> <li>• Check whether Time Shift is enabled. (Setup\Miscellaneous\Preferences)</li> <li>• Ensure the Time Shift buffer contains enough data to execute the desired function.</li> </ul>
Unable to play media files	<ul style="list-style-type: none"> <li>• Check whether the media files are in a format that is supported by the product.</li> <li>• Check whether the media files are playable on another device or if there may be some issue or error with the actual media files.</li> </ul>

This page intentionally left as blank.

# Specification

## Main System

Main Processor	200MHz RISC CPU
HDD	320 or 500GB (SATA)

## Tuner & Channel Decoder

Dual Tuner	DVB-T Compliant (Internal Loop-through)
Tuner Input Conn.	IEC 169-2 Female Type
Tuner Loop-through Conn.	IEC 169-2 Male Type
Frequency Range	174~230MHz, 470~860MHz
Signal Level	-20 ~ -80dBm
Aerial Supply	5V, max. 100mA (Switchable in Setup)

## Video & Audio Output

Analog Video Output	Composite, S-Video, Component
Digital Video Output	HDMI w/ HDCP
Analog Audio Output	5.1 Ch RCA
Digital Audio Output	Coaxial, Optical (S/PDIF, Pass-through)

## Extended Interface & Slots

Ethernet	10/100 Ethernet Port
USB Host	2 USB Host Ports (USB 2.0 Compliant)
Memory Card Slots	SD/MMC/MS/CF Card

## Video & Audio Decoding

MPEG-2 Video	MPEG-2 up to 1080i
MPEG-4.2 Video for DivX	MPEG-4.2 720p
MPEG-4.10 (H.264) Video	MPEG-4.10 up to 1080i
MPEG Audio	MPEG-1 Layer I, II, III (MP3)
Dolby Audio	Dolby Digital Stereo Decoding
Pass-through	Dolby & DTS Pass-through

## Front Panel

VFD	Alphanumeric Display
RTC	Real-time Clock

## Power Supply

Input Voltage	100~240VAC, 50/60Hz
Type	SMPS
Standby Power Consumption	Max. 5W
Power Consumption	Max. 40W
Protection	Separate Internal Fuse Lightning Protection

## Physical Specification

Size	390x60x295 mm
Weight	3.7Kg

- Specifications are subject to change without prior notice.

# Warranty Conditions

1. Only the original invoice/receipt issued by the dealer will be accepted by beyonwiz as proof of purchase.
2. beyonwiz may reject warranty claims on equipment that it believes to be illegally acquired or when the "owner" is unable to provide proof of purchase or where security labels or serial numbers have been tampered with or removed.
3. The warranty covers only defects in the material and workmanship of the product for a period of 12 months from the date of original purchase.
4. This warranty is on a "Return to Base" basis. The owner is responsible for the delivery to, and collection from, the point of purchase of the equipment.
5. The warranty is void if failures arise as a result of any of the following. i) Abuse, misuse, physical impact, normal wear and tear. ii) Alteration or repairs carried out without written authorization from beyonwiz. iii) Upgrades that are not approved by beyonwiz. iv) The unit being operated or maintained other than in accordance with the supplied manual.
6. This equipment will not be considered defective as a result of incompatibility with other equipment or accessories other than the ones supplied with the unit at the time of purchase.
7. This unit should be returned in its original carton and protective packaging or alternatively in a packing suitable to prevent damage. beyonwiz will not accept any responsibility for goods damaged whilst transit.
8. Repair or replacement under the terms of this warranty does not give the right to an extension or a renewal of the warranty period. Repairs or replacements may be carried out with functionally equivalent new, reconditioned or equivalent parts. Parts that have been replaced become the property of beyonwiz.
9. The customer acknowledges that no promise, representation or undertaking has been given by beyonwiz, or its dealers, in relation to equipment other than as contained in this warranty.
10. A service charge will apply if the fault is not covered within the conditions of this warranty or if there is no fault found. The charge will be based on the current market rate.
11. beyonwiz is not liable for any loss other than that covered by this warranty.
12. Nothing contained in this warranty shall be read or applied so as to affect the right of the consumer in relation to the provisions of the trade practices act or other statutory rights provided by legislation of the state or territory. In the absence of applicable legislation this warranty will be the purchaser's sole and exclusive remedy and neither beyonwiz nor its distributors or agents shall be liable for any incidental or consequential damages for the breach of any express or implied warranty of this equipment.

## WEEE Information



### Correct Disposal of This Product (Waste Electrical & Electronic Equipment)

This mark, shown on the product or its literature, indicates that it should not be disposed of with other household waste at the end of its working life. To prevent possible harm to the environment or human health from uncontrolled waste disposal, please separate this from other types of waste and recycle it responsibly to promote the sustainable reuse of resources.

Household users should contact either the retailer where they purchased this product, or their local government office, for details of where and how they can take this item for environmentally safe recycling.

Business users should contact their supplier and check the terms and conditions of their purchase contract. This product should not be mixed with other commercial waste for disposal.

## Contact beyonwiz

beyonwiz Australia

[support@beyonwiz.com.au](mailto:support@beyonwiz.com.au)

[www.beyonwiz.com.au](http://www.beyonwiz.com.au)

Some features and information in this manual may differ slightly from the product itself due to firmware version and changes made after printing.



Version 1.52\_Eng



beyonwiz  
Invent Your Future