

Contents

English

1. Introduction	1
1.1 Overview	
1.2 Main Features	
2. Safety/Precautions	3
2.1 Safety	
2.2 Precautions	
2.3 Positioning	
3. Points to Check before Use	5
3.1 Accessories	
4. Controls/Functions	6
4.1 Front Panel	
4.2 Rear Panel	
4.3 Remote controller	
4.4 Front Display	
5. How to Connect	11
6. Operation	12
6.1 Getting Started	
6.2 System Setting	
6.3 Channels	
6.4 Electronic Program Guide	
6.5 Games	
6.6 Storage	
6.7 System Information	
6.8 DVR	
6.9 MEDIA	
6.10 PIP Function(Picture in Picture)	
7. Troubleshooting	54
8. Specifications	55

Introduction

1.1 Overview

This receiver is designed for the reception of free to air channels and is equipped with a hard drive memory unit to allow program and content recording.

To ensure the correct operation of this product the user manual must be read by any person that is installing, connecting, operation or cleaning the unit.

*** Note: All products that are marked either directly or labeled on the packaging with the following icon:**




Cannot be disposed of through the normal household waste channels and must be disposed of through specialized collection centers that recycle electric and electronic devices.

By disposing of such products as required by law, you are contributing to the protection of the environment.

Incorrect disposal can be hazardous to human health and the environment.

1.2 Main Features

- ▶ Digital Video Recorder with Twin Tuner
- ▶ Built in 1TB Hard Drive
- ▶ Time Shift, Record & Playback (Max. 3 channels recording simultaneously)
- ▶ Media Playback via external storage devices (HDD, SD Card Reader)
- ▶ 2 X USB 2.0 Host for MP3 Playback, JPEG Viewing & Firmware Update
- ▶ Ethernet Port for file transfer and Ice TV functionality
- ▶ DVB-T, MPEG-2/MPEG-4 Compliant
- ▶ 1080p / 1080i / 720p / 576p / 576i Video Resolution
- ▶ HDMI Output
- ▶ Component Video (Y, Pb, Pr) Outputs
- ▶ Auto & Manual Channel Search
- ▶ Dolby Digital Optical Output
- ▶ Channel Sorting by Alphabet
- ▶ 16 Favorite Channel Groups
- ▶ Selection of 12 languages
- ▶ Picture in Picture Feature
- ▶ SD Card Reader
- ▶ AV input capable via Component and Composite
- ▶ 16:9 Full Screen, 4:3 Letterbox & 4:3 Full Screen
- ▶ Electronic Program Guide
- ▶ Subtitle
- ▶ Auto Voltage (AC 100 - 250V) SMPS
- ▶ Support MEPS(Minimum efficiency performance standard)
- ▶  **DOLBY** DIGITAL PLUS Manufactured under license from Dolby Laboratories. "Dolby" and the double-D Symbol are trademarks of Dolby Laboratories.
- ▶ Compatible with Ictv Electronic Program Guide

Safety Precautions

2.1 Safety

Please thoroughly read the following safety precautions before operating this receiver. You are required to read all notes, instructions and warnings contained in this User Manual.

2.2 Safety Precautions

- ▶ Only connect the receiver to a properly installed 100-240V, 50-60 Hz mains socket.
- ▶ During electrical storms it is recommended the receiver be unplugged from the mains.
- ▶ To avoid any risk of fire and electric shock, do not expose the receiver to any water. If objects or liquids enter the receiver, immediately unplug power from the mains. Contact a qualified service technician before using the receiver again, or there may be a risk of electric shock.
- ▶ Do not open the cover as there is a risk of electric shock.
- ▶ When the receiver is not in use for extended periods, disconnect the plug from the mains.
- ▶ Never use the receiver with a damaged mains cable as there is a risk of electric shock.
- ▶ Should the mains cable be damaged, refer to a qualified service technician or contact an authorized Strong technician to arrange repair or replacement before using the receiver again.
- ▶ Do not allow children to use the receiver without supervision.
- ▶ Always refer maintenance to a qualified service technician or contact Strong for an authorized representative.

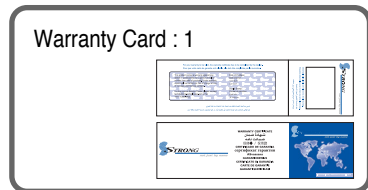
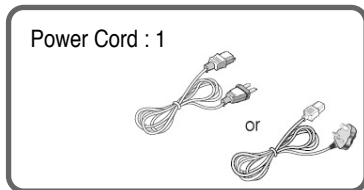
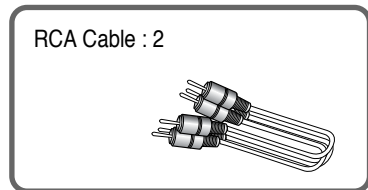
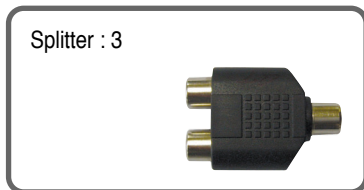
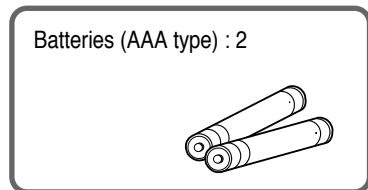
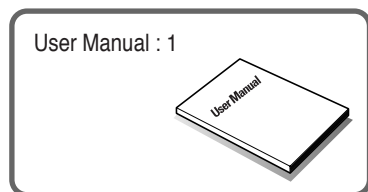
2.3 Positioning

- ▶ Ensure the receiver is placed on a stable, even surface.
- ▶ Do not place heavy objects on top of the receiver.
- ▶ Install the receiver in a well ventilated location and avoid direct sunlight.
- ▶ Avoid dusty locations.
- ▶ Never cover the ventilation holes in the cover of the receiver.
- ▶ Humidity can occur inside the receiver when moving from a cold to a warm place. In this case, wait approximately one hour before operating the unit.

Points to Check before Use

3.1 Accessories

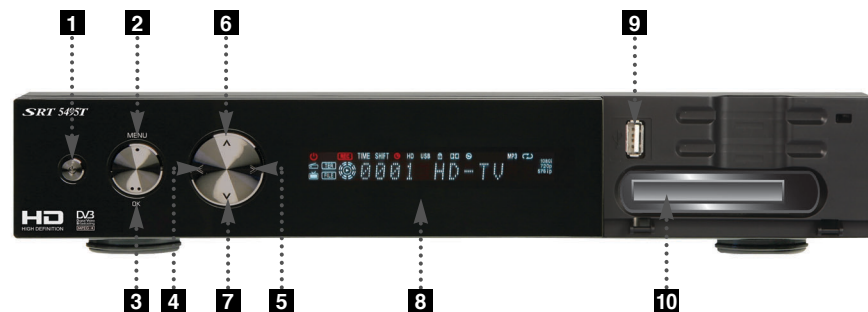
Unpack the unit and ensure that all of the following items are included in the pack.



► If any of the above listed accessories are missing, please contact your sales representative.

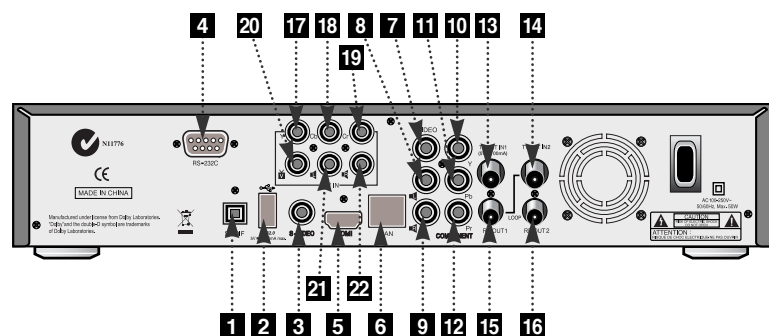
Controls/Functions

4.1 Front Panel



- 1 Power** : Switches the receiver between "Standby" and "Power ON"
- 2 Menu** : To enter or exit the main menu.
- 3 OK** : To display the channel list or select and confirm an item in the menu mode.
- 4 - 5 VOL (◀/▶)** : To adjust the volume.
- 6 - 7 CH (▼/▲)** : To change channels or position the cursor on the application screen
- 8 Passive Standby / Power on indications Lamp** : Flashes blue light in "Passive Standby" mode and shows no light in "Power ON" mode.
- 9 USB** : To connect a USB device (ex. Memory stick or external hard drive)
- 10 SD Card Reader** : To read and write data to SD media.

4.2 Rear Panel



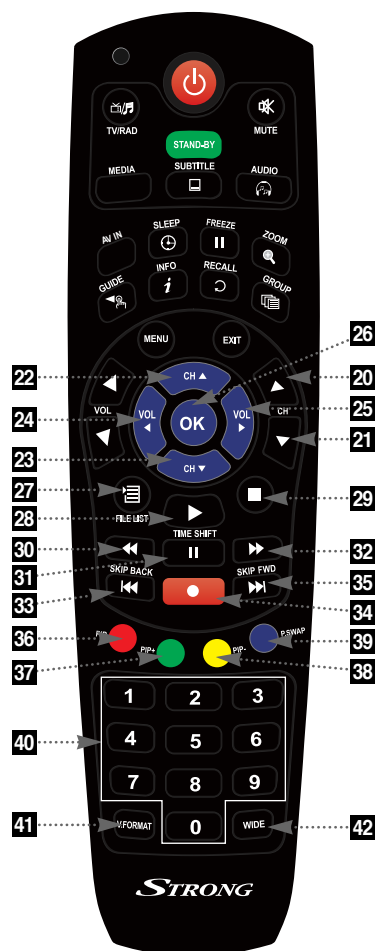
No.	Name	Connector	Function
1	S/PDIF	Fiber Optic	Digital audio output (Optical)
2	USB	USB A-type	USB 2.0
3	S-VIDEO	MINI-DIN	S-VHS Output
4	RS-232C	DB-9	Low speed serial port
5	HDMI	HDMI	Digital Video/Audio Output
6	LAN	RJ-45	10/100Mbps Ethernet
7	VIDEO	RCA cinch	Composite video output
8	AUDIO	L RCA cinch	Left audio output
9	AUDIO	R RCA cinch	Right audio output
10	Y	RCA cinch	Component video output(Y)
11	Pb	RCA cinch	Component video output(Pb)
12	Pr	RCA cinch	Component video output(Pr)
13	ANT IN1	IEC 169-2 FEMALE	Input from terrestrial antenna
14	ANT IN2	IEC 169-2 FEMALE	Input from terrestrial antenna
15	ANT OUT1	IEC 169-2 MALE	Loop-through output from digital tuner and Output to TV
16	ANT OUT2	IEC 169-2 MALE	Loop-through output from digital tuner and Output to TV
17	Y	RCA cinch	Component video input(Y)
18	Cb	RCA cinch	Component video input(Cb)
19	Cr	RCA cinch	Component video input(Cr)
20	VIDEO	RCA cinch	Composite video input
21	AUDIO	L RCA cinch	Left audio input
22	AUDIO	R RCA cinch	Right audio input

4.3 Remote controller



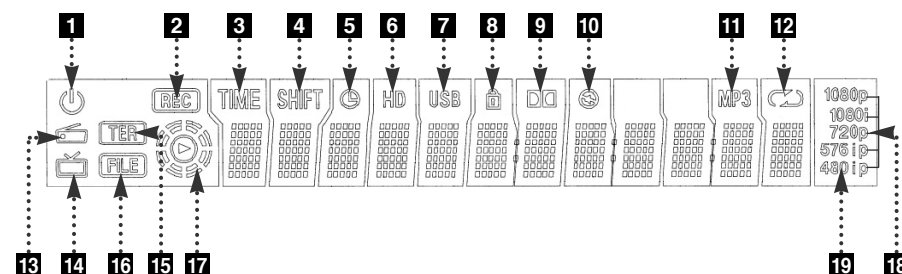
- 1 POWER** : Turns the unit on and off
- 2 STAND BY** : Places the receiver in standby mode
- 3 TV/RADIO** : Switches between TV and Radio functions
- 4 MUTE** : Turns the sound on and off
- 5 MEDIA** : To access media file playback menu
- 6 SUBTITLE** : To turn the closed captions on and off
- 7 AUDIO** : To display the Multi-language audio track, stereo/mono mode and subtitle information
- 8 AV IN** : To view the AV In channel directly
- 9 SLEEP** : To turn the unit off after a pre-set time
- 10 FREEZE** : Press once to pause live TV. Press again to resume play
- 11 ZOOM** : Activates the zoom function
- 12 GUIDE** : Displays the TV/Radio Electronic Program Guide
- 13 INFO** : Displays information about the selected program. Press twice for additional detail
- 14 RECALL** : To return to the previous channel
- 15 GROUP** : To select set channel favorite groups
- 16 MENU** : To enter or exit the main menu
- 17 EXIT** : To exit the current menu and move to the previous menu
- 18 - 19 Vol Up & Down** : To change volume setting

4.3 Remote controller



- 20 - 21 CH Up/Down** : To change channels
- 22 - 23 Up & Down** : To change channels or move the cursor up and down in menu mode
- 24 - 25 Left & Right** : To change the volume level. Also modifies a setting in menu mode
- 26 OK** : To show the channel list or to select or confirm an item in menu mode
- 27 FILELIST** : Displays the file list
- 28 PLAY** : Press to play content
- 29 STOP** : Press to stop playback
- 30 RWD** : Playback in rewind mode
- 31 PAUSE** : Pauses playback and begins timeshift
- 32 FWD** : Starts playback
- 33 SKIP BACK** : To skip back while watching recorded programs
- 34 REC** : To start recording
- 35 SKIP FORWARD** : To skip forward while watching a recorded program
- 36 PIP** : To activate the Picture in Picture Function
- 37 PIP+** : To change the PIP channel up
- 38 PIP-** : To change the PIP channel down
- 39 P.SWAP** : To swap the PIP picture and the main picture
- 40 Numeric Keys (0-9)** : To enter numerical setting such as channel numbers
- 41 V.FORMAT** : To change video output resolution
- 42 Wide** : To select an aspect ratio with Pan Scan or Letterbox (4:3) (Full screen or Pillar box)

4.4 Front Display



1		Indicates Power (On/Off) mode
2		Lights when the current channel is recording
3		Lights when Time Shift is enabled
4		Lights when Time Shift is enabled
5		Lights when the Timer is set
6		Lights when a High Definition signal is received
7		Lights when a USB device is connected
8		Indicates the current channel is set in Lock mode
9		Lights when the current channel is Dolby audio format
10		Lights when the current sound is set to Off
11		Lights when Mp3 player is enabled
12		Lights when an Mp3 player is set in loop mode
13		Lights when the current channel is in Radio mode
14		Lights when the current channel is in TV mode
15		Lights when the signal is being received via the antenna
16		Indicates the current playback mode in the file list
17		Lights when a recorded file is being played
18		Indicates the resolution of video output
19		Indicates Progressive or Interlaced scanning mode

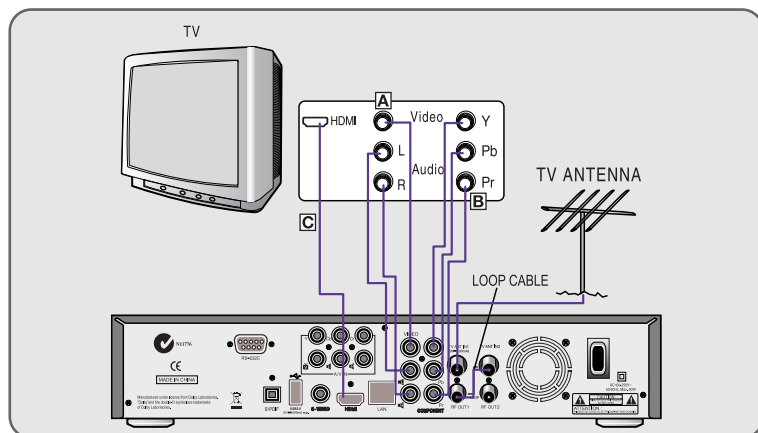
How to Connect

- 1** Connect the antenna lead coming from the wall plate to the input marked "Tuner 1"
- 2** Connect the Loop Cable provided to the input marked Tuner 1 RF then to the Tuner 2 input as shown in the diagram below
- 3** There are a number of methods to connect your receiver to your television
 - A.** Using the Composite cable provided (red, white and yellow leads)

For video, connect the yellow lead to the yellow socket on back of the receiver and to the corresponding Video Input socket on the back of the TV.

For Right Audio, connect the red lead to the red socket on the back of the receiver and to the corresponding Right Audio Input socket on the back of the TV.

For Left Audio, connect the white lead to the white socket on the back of the receiver and to the corresponding Left Audio Input socket on the back of the TV.
 - B.** Using the Component cable (Sold separately) (green, blue and red leads) paying attention to the color coding, connect the three color coded leads to the matching sockets in the back of the receiver and Video In sockets of the TV. You will also need a connection for Right and Left audio via the audio socket. This may be achieved using the Composite cable supplied and connecting the red and white leads as described in Step A above.
 - C.** If your TV has a HDMI input, you can use a HDMI cable (sold separately) from the back of the receiver to the TV. A HDMI cable supplies both video and audio signals through a single cable so no other leads are required. Please ensure your TV is set to the HDMI input mode to detect the receiver.



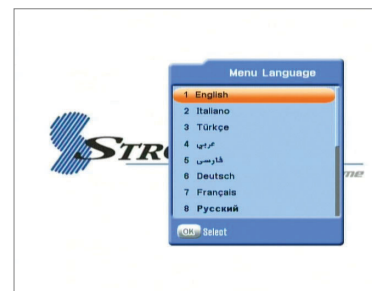
Operation

6.1 Getting Started

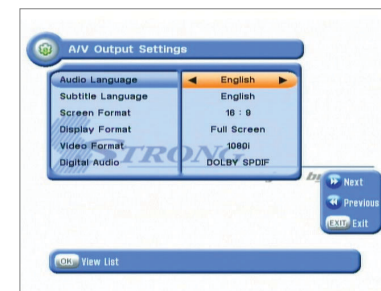
After your receiver is powered on, proceed with installation as follows :

1) Installation Wizard

- 1** Plug in the receiver and position the power switch to "on"
- 2** Turn on your TV
- 3** A pop-up menu will appear for language selection <Figure 6.1.1> Select the desired language and press **OK** button to proceed
- 4** The AV output setting menu will now appear <Figure 6.1.2>. Use the **◀** / **▶** to select the desired settings and press **OK** button to proceed (see also Page 19)



<Figure 6.1.1>



<Figure 6.1.2>

- 5** The time setting menu will now be displayed <Figure 6.1.3>. Once again use the **◀** / **▶** to select the desired time and confirm by pressing **OK** button. (see also Page 18)
- 6** The Auto Scan menu will now appear <Figure 6.1.4> In this mode the receiver will scan for all available channels and save them.



<Figure 6.1.3>



<Figure 6.1.4>

- 7 With the "All Channels" icon highlighted <Figure 6.1.5> press the **OK** button to start the scan. Scanned channels will be shown on screen <Figure 6.1.6>



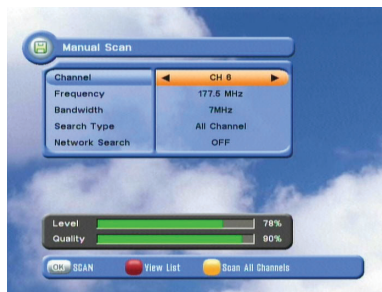
<Figure 6.1.5>



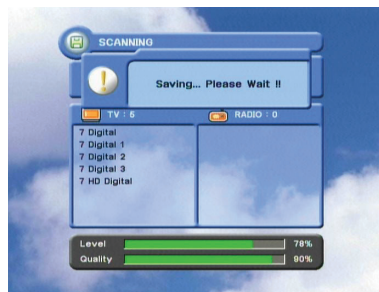
<Figure 6.1.6>

2) Manual Scanning

To manually scan a channel select the channel number using the **VOL** and **VOL** keys on the remote control <Figure 6.1.7> and press **OK**.



<Figure 6.1.7>

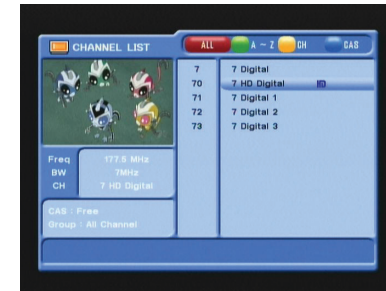


<Figure 6.1.8>

3) Channel Selection

You can use the **CH** and **CH** keys to navigate between channels to select desired channels.

- ▶ If you know the channel number you can enter it using the NUMERIC buttons on the remote control and wait 2 seconds for the change.
- ▶ Detailed information about the selected channel will be displayed on the right hand side of the screen <Figure 6.1.9>



<Figure 6.1.9>

- ▶ You can use the following buttons to navigate between channels

- **CH** and **CH** : Moves one channel up or down
- **VOL** and **VOL** : Moves one page up or down
- **RED** : Shows all channels in the current group
- **Green** : Shows all channels alphabetically
- **Yellow** : Shows all channels by transponder
- **Blue** : Shows all channels by CAS.

- ▶ Press **OK** when the selection bar is positioned on the desired channel.

4) Other Functions of the Remote Control

▶ Volume Control

- ① Press **Vol+** or **Vol-** to adjust the volume while watching a program
- ② Pressing the Mute button will remove the sound and the mute icon will be displayed. Pressing the Mute button again will restore the sound.

▶ Channel Information

- ① Pressing the INFO button will briefly display the channel information
- ② Pressing the INFO button a second time will display a more detailed program information

▶ TV/RADIO switching

Press this button to change from a TV to a Radio channel. Pressing the button again will return the unit to the TV channel

▶ RECALL

Pressing this button returns the unit to the previously viewed channel

▶ Audio

Use this button to adjust the subtitles or audio status of the current channel

- **Audio Mode** : Select from Stereo → Mono Left → Mono Right
- **Audio Track** : Select between tracks available in this program
- **Audio Level** : Use to select High → Medium → Low

* **Note** : *Subtitle and audio settings are only available when the selected channel supports these functions.*

▶ FREEZE

Press this button to freeze video. Pressing the button again will restore the video.

▶ GROUP

This button is used to view the list of favorite channel groups. Only registered groups are displayed.

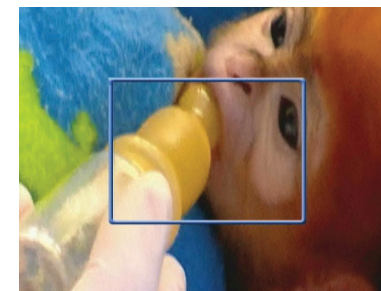
▶ ZOOM

By pressing the **Zoom In** button you can zoom in video.

- ① By pressing the PAUSE button and **Zoom In** you can zoom in on sections of video on Freeze <Figure 6.1.10>
- ② While watching a program press **Zoom In** to zoom in on sections of a video <Figure 6.1.11>
- ③ To cancel the freeze status release it by pressing the ZOOM button continuously.



<Figure 6.1.10>



<Figure 6.1.11>

▶ SUBTITLE

By pressing **Subtitle** you can select the subtitle language of the current channel <Figure 6.1.12>

▶ SLEEP

You can set your receiver to turn off after a period of time. Available timer selections are 10,20,30,60,100 and 120 minutes. To activate press **Sleep** and set the timer. <Figure 6.1.13>

- To cancel the sleep timer press **Sleep** until the minutes are set as "0 min"



<Figure 6.1.12>



<Figure 6.1.13>

6.1 Getting Started

► V.FORMAT <Figure 6.1.14>

You may select the video resolution by pressing **V.FORMAT**. Available selections are 1080p → 1080i → 720p → 576p → 576i

► WIDE <Figure 6.1.15>

Pressing **WIDE** changes the aspect ratio. Available ratios are:

- 4.3 Pan-Scan or Letter-Box
- 16.9 Full-Screen or Pillar-Box



<Figure 6.1.14>



<Figure 6.1.15>

6.2 System Setting

These can be accessed by pressing the **MENU** button and then scrolling to the "System" section and pressing **OK**.

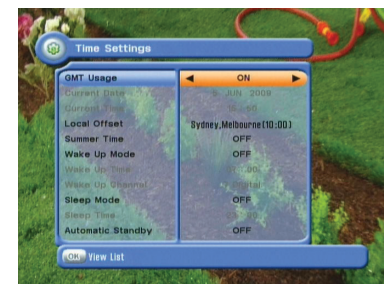
1) Time Settings

The sub menu allows you to set your local time, wake up timer, wake up channel and sleep time. <Figure 6.2.1>

Use the scroll buttons to select the following options

- **GMT Usage** : Set this ON for the local time to be determined by adjusting the time difference with GMT.
- **Current Date** : If GMT Usage is OFF you can change the date by pressing **OK**
- **Current Time** : If GMT Usage is OFF you can change the time using the **NUMERIC** buttons
- **Summer Time** : Select the time during which summer time is applied
- **Local Offset** : If GMT Usage is ON, local time is GMT + Local Offset
- **Wake Up Mode** : Selects wake up frequency (Off/Once/Daily/Mon - Fri)
- **Wake Up Time** : Set the wake up time using the **NUMERIC** buttons.
- **Wake Up Channel** : Press **OK** to set the wake up channel.
- **Sleep Mode** : Use to select sleep frequency (Off/Once/Daily/Mon-Fri)
- **Sleep Time** : Set the sleep time using the **NUMERIC** buttons
- **Automatic Standby** : Selects auto standby time (OFF/After 1~8Hour)

After making your selection press **OK** to confirm



<Figure 6.2.1>

6.2 System Setting

2) A/V Output Settings

This menu lets you specify the audio and video output settings of your receiver <Figure 6.2.2>

Use the scroll buttons to select your desired setting

- **Audio Language** : set the audio language
- **Subtitle Language** : Select the subtitle language
- **Screen Format** : Select the screen format (16.9/ 4.3)
- **Display Format** : Select the aspect ratio
- **Video Format** : Select the video format from 1080p, 1080i, 720p, 576p or 576i
- **Digital Audio** : Selects the audio output type

After making your selection press the **OK** to confirm



<Figure 6.2.2>

6.2 System Setting

3) On Screen Display Settings

Using this menu, you can select the menu language, the transparency of the on screen display and the duration that the display and volume bars are shown on the screen.

<Figure 6.2.3>

Use the scroll buttons to highlight and adjust your selections and press **OK** button to confirm.



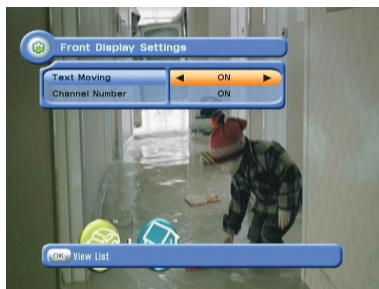
<Figure 6.2.3>

4) Front Display Setting

This function enables you to set the front display settings.

Moving text can be enabled or disabled and Channels can be set to display Channel Name or Name and Numbers.

Use the scroll button to highlight and adjust your selection and press the **OK** button to confirm. <Figure 6.2.4>



<Figure 6.2.4>

- Standby Mode (Selecting Power Saving or Normal)

Highlight standby mode using the **CH▲** and **CH▼** arrow keys. Use the **VOL+** / **VOL-** arrow keys to adjust your selection.

- **Power Saving** : Set Power Saving to ON using the left and right arrow keys for the receiver to consume less power whilst in standby
- **Normal** : Should you wish to access your televisions inbuilt tuner whilst your STRONG DVR is in standby you will need to set the Standby Mode to Normal. Using the **VOL+** / **VOL-** arrow keys set Standby Mode to Normal.

Press the **EXIT** button, you will be prompted whether you wish to save the settings select Yes using the **VOL+** / **VOL-** arrow buttons and press the **OK** button

5) Security Settings

To prevent unauthorized access to classified programming, you can set a personal PIN number for your receiver. **(Note that the factory set default password is : 0000. PIN and password are the same)** <Figure 6.2.5>

By setting any of the following functions to **OK** in this menu, the PIN will be required to access them;

- Receiver Lock, Install Lock, Channel Lock, Lock Channel Confirm

► Age Limit (Parental Lock)

Under this menu you may select a Rating of programs you choose to block.

All available ratings are listed in the menu and when the program information regarding the rating available from the broadcaster exceeds the selection, a PIN number is required to access the program.

Use the scroll buttons to make your selection and press **OK** button to confirm.

This section also contains options to change and enter new passwords.



<Figure 6.2.5>

6.2 System Setting

6) Database Reset <Figure 6.2.6>

This section allows you to reset the receiver to the factory settings.

- **Delete Radio Channels** : Erase all radio channels in the database.
- **Delete Scramble Channels** : Erase all scramble channels in the database.
- **Delete All Channels** : Erase all channels.
- **Factory Set** : Erase all channels and restore the factory default settings.

Please note that a factory reset is required to be performed after a software upgrade



<Figure 6.2.6>

6.2 System Setting

7) IP Setting

If the Network supports DHCP, IP settings can be allocated automatically. If the Network does not support DHCP, the Addresses must enter manually (Static IP).<Figure 6.2.7>

- **DHCP Usage** : On/Off to receive IP settings automatically
- **IP Address** : Enter the IP address
- **Subnet Mask** : Enter Subnet Mask Number from your Network
- **Gateway** : Enter IP address of Gateway (e.g. router)
- **DNS** : Enter IP address of main DNS Server
- **Mac Address** : Mac Address display



<Figure 6.2.7>

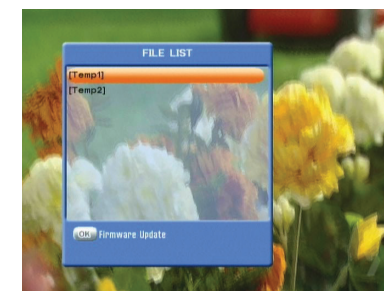
- **Firmware update** : Support download from a LAN.

- 1 **BLUE** button, appear input target IP address.
- 2 **RED** button to Scan after inputting a target IP.
- 3 Choose a update software and **OK** button for downloading.

*** Note :** *The PC tool STB Daemon must be installed on your PC before you can connect your receiver the PC. Please refer to the "Connecting your receiver via LAN to a PC" section for PC Tool download instructions*



<Figure 6.2.8>



<Figure 6.2.9>

6.2 System Setting

Connecting your receiver via LAN to a PC

1. Follow these instructions prior to connecting your receiver to your PC:
 - Run the PC Tool program before connecting to your PC(STB Daemon)
 - Click Browse and select a sharing folder on your PC.



- Press "OK" then select STB Daemon and the window will be hidden. You can still see the icon on bottom right of the windows screen.



2. Connect an Ethernet cable from your DVR to your network port
3. Press menu, Select System Settings, Select IP Settings:
 - If your Network supports DHCP, IP settings can be allocated automatically by turning DHCP Usage on and pressing the red colored key



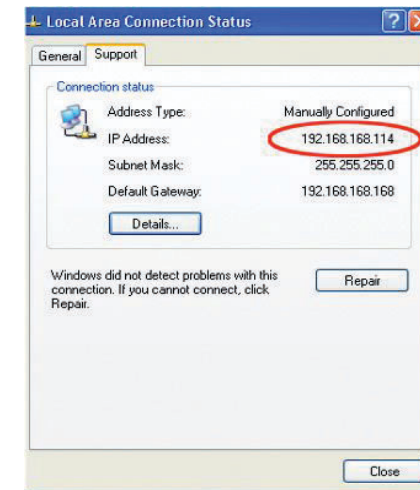
6.2 System Setting

- If your Network does not support DHCP, the IP Address must be entered manually (Static IP). EG. If your computers IP is 192.168.168.114, you can allocate the unit an IP of 192.168.168 any other number not used on your network.

Click the network icon on the bottom of your desktop



Now Select the Support Tab, you can then locate your IP Address



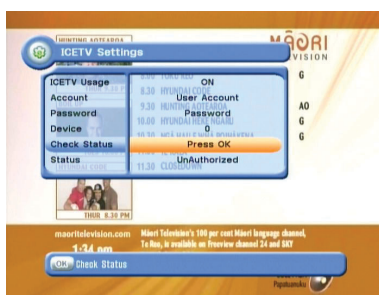
4. You can now go into the Storage, File Manager menu and press the yellow colored key to type in the IP address of the computer with STB Daemon running.

8) ICE TV Settings

Connect your receiver via LAN to an internet connection to receive the Ice TV EPG service.

IceTV is an independently compiled electronic program guide (EPG) for digital free-to-air television delivered via the internet. The IceTV EPG service gives you access to the online EPG and enables you to set timer recordings via the Ice TV online EPG.

To activate your Ice TV account you will need to input the information in the Ice TV settings menu. To purchase an Ice TV subscription please visit the Ice TV website at www.icetv.com.au



<Figure 6.2.10>

You will need to connect your receiver to an internet connection via the LAN port on the back panel. Connect the LAN cable from your Modem or Router to the receiver.

You will then be required to enter your home network details in the Ice TV settings menu as below:

- **ICETV Usage** : Select On/Off to activate or deactivate the IceTV feature
- **Account** : Enter your IceTV account name
- **Password** : Enter your IceTV account password
- **Device** : Select 0,1,2 or 3 depending on how many receivers are linked to the IceTV account
- **Check Status** : Once you input your Ice TV account details and connected the LAN cable to the receiver press OK to check the status of your connection. When your receiver is connected to Ice TV the status will state "Authorized"
- **Status** : Displays the current status of your Ice TV account

If you are experiencing a problem connecting to your Ice TV account and you are receiving "Unauthorized" message in the Status section please contact Ice TV to ensure your account details are correct and has been activated.

9) Data Transfer

Used to transfer data from another receiver. Select the appropriate caption and press **OK** button to confirm. <Figure 6.2.11>

- **Firmware** : Transfer the firmware of a receiver to another receiver.
- **Channel Data** : Transfer the channel data of a receiver to another receiver.



<Figure 6.2.11>

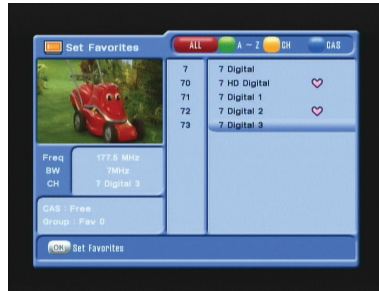
1) Setting Favorite Channels

This section allows you to select up to 16 groups of favorite channels in either TV or Radio.

- 1 Press **OK** on "Set Favorites" and the group lists will be displayed <Figure 6.3.1>
- 2 Press **OK** button to choose a group and a new menu will appear <Figure 6.3.2>
To change the name of the group press the RED button
- 3 Press **OK** to add or remove a channel from the list
- 4 Press **EXIT** button to return to the previous menu.



<Figure 6.3.1>

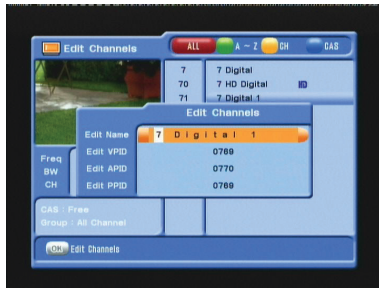


<Figure 6.3.2>

2) Edit Channels

This section lets you rename and edit channels. You can select from Radio or TV by pressing the **TV** button or a channel by pressing the **CH** button.

- 1 Press **OK** button on "Edit Channels" and a new menu will appear <Figure 6.3.3>
- 2 Press **OK** button on the desired channel
- 3 Press **OK** button on "Edit Name" to rename the channel using the displayed keypad



<Figure 6.3.3>

3) Move Channels

By navigating through this section you can change the channel sequence.

- 1 Choose the channel list by pressing the **CH** button, use the cursor keys to select the desired options. <Figure 6.3.4>
- 2 Press the **EXIT** button to return to the previous menu.

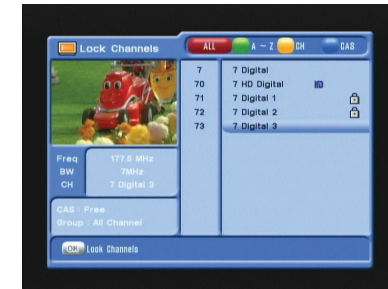


<Figure 6.3.4>

4) Lock Channels

This feature allows you to lock a specific channel so it will require a password to access it.

- 1 Press **OK** button on the "Lock Channels" and follow the on-screen prompts to set the function. <Figure 6.3.5>
- 2 Press **EXIT** to return to the previous menu.



<Figure 6.3.5>

5) Skip Channels

This feature skips a set channel when using the **CH▲** and **CH▼** buttons to navigate channels.

- 1 Press **OK** on the "Skip Channels" and follow the on-screen prompts to activate the feature on the selected channels. <Figure 6.3.6>
- 2 Press **EXIT** to return to the previous menu.



<Figure 6.3.6>

6) Delete Channels

This function allows you to delete a channel selection.

* **NOTE : Deleting a channel means you will not be able to access it until you rescan.**

- 1 Press the **OK** on "Delete Channel" and follow the screen prompts to activate this feature. <Figure 6.3.7>
- 2 Press the **i** button to delete all channels in the current list; you will be asked to enter your password.
- 3 Press **EXIT** to return to the previous menu.



<Figure 6.3.7>

7) AV Input Channel

- Your STRONG SRT 5495T incorporates an AV Input feature that will allow you to record from any external video source to the internal HDD, such as Pay TV, Gaming consoles, Camcorders and many others
- You can connect your external audio/video source either via Component or Composite Video cables and Audio Left and Right RCA cables
- To activate the AV In feature press **MENU**, using the arrow buttons highlight Channels and press the **OK** button. You will be prompted to enter your PIN (the default PIN number is '0000') to access this menu.
- Using the arrow buttons highlight AV In and press the **OK** button, the AV In menu screen will be displayed
- With AV Input highlighted, using the arrow buttons select ON
- To set the Input Selection, use the arrow down button select Input Select, now using the **VOL▲** / **VOL▼** arrow buttons select the appropriate connection type.
- If you have connected your external video source via Component (Red, Green and Blue RCA cables) select YCbCr
- If you have connected your external video source via Composite (Yellow RCA cable) select CVBS
- Now press the **EXIT** button, you will be prompted to save these settings. Using the arrow buttons select Yes and press the **OK** button.

The AV Input channel will be added in the channel list at the last position. To access the AV In channel press the AV IN button on the remote control. You can also access the AV In channel by pressing the **CH▲** and **CH▼** buttons until it is displayed or alternatively press the **OK** button to bring up the Channel List. And select AV In by pressing the **OK** button.

※ Please note: The procedure to record from your gaming console or camcorder in real time is to utilize the supplied RCA Cables and RCA Splitters to connect your gaming console/camcorder to the SRT 5495T AV Input and to the AV Input of your TV separately.

- The RCA Splitters have 1 x RCA Socket on one side and 2 x RCA Sockets on the other side.
- Connect the Yellow (Video Signal), Red (Audio Output Right) and White (Audio Output Left) into the single RCA socket of each splitter.
- Using the supplied RCA Composite cables, connect both sets of RCA cables into the RCA Splitters.
- The 2 x Yellow (Video Signal) plugs should be connected to the 2 x RCA sockets of the splitter that has the Yellow (Video Signal) plug connected to it from the gaming console.
- The 2 x Red (Audio Output Right) plugs should be connected to the 2 x RCA sockets of the splitter that has the Red (Audio Output Right) plug connected to it from the gaming console.
- The 2 x White (Audio Output Left) plugs should be connected to the 2 x RCA sockets of the splitter that has the White (Audio Output Left) plug connected to it from the gaming console.
- Now connect the RCA Composite cable to the corresponding Video Input socket on the back of the TV.
- For Right Audio, connect the red lead the corresponding Right Audio Input socket on the back of the TV.
- For Left Audio, connect the white lead to the corresponding Left Audio Input socket on the back of the TV.

Once you have connected the desired device to the AV Input channel of the receiver, select the AV In channel using the **CH ▲** and **CH ▼** keys or by pressing the AV IN button.

To record press the **RECORD** button, the receiver will immediately begin recording the AV In channel for the default time of 3:00 Hours. To change the default time, press the Record button again to bring up the record duration setting. Using the **CH ▲** and **CH ▼** arrow buttons highlight Duration and then using the **VOL ▲** / **VOL ▼** arrow keys increase or decrease the recording duration.

Press the **EXIT** button to leave this menu.

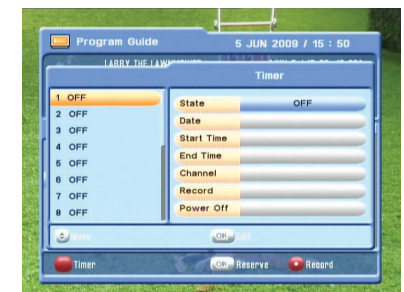
Now using your TV remote control select the AV Channel that you have connected the RCA cables to from the splitter. Once you have selected the AV Channel you can view the camcorder or game play in real time while the SRT 5495T records simultaneously.

1) EPG

- 1 An EPG (Electronic Program Guide) is an on screen list displaying scheduling information for current and upcoming programming from all Free To Air broadcasters for the next 7 Days.
- 2 To access the EPG press the **EPG** button, the list of channels will be displayed in the left window and the programming information for the selected channel will be displayed in the right window
- 3 Use the **CH ▲** or **CH ▼** arrow buttons to select the desired channel. Press the **VOL ▲** arrow button to access the programming information for the desired channel
- 4 By selecting the desired program, detailed program information will be displayed in the top pane of the EPG screen
- 5 To Record a selected program press the **RECORD** button (Refer to the 'How To Record on your STRONG SRT 5495T Digital Video Recorder' section for recording instructions via the EPG
- 6 To Reserve a program for viewing, select the program by pressing the **OK** button. This will highlight the program. You receiver will now automatically display this program when it begins even if you are watching another channel



<Figure 6.4.1>



<Figure 6.4.2>



<Figure 6.4.3>



<Figure 6.4.4>

Your receiver contains 4 built-in games programs.

1) Tetris

- 1 Press **OK** button to activate the menu <Figure 6.5.1>
- 2 Use **CH ▲** / **CH ▼** to select a skill level
- 3 Press **OK** button to start the game <Figure 6.5.2> or press EXIT to return to the previous menu.
- 4 Use the cursor keys to play the game.
- 5 You can see the next block in the top-right small window.
- 6 Press the **EXIT** to quit the game.



<Figure 6.5.1>



<Figure 6.5.2>

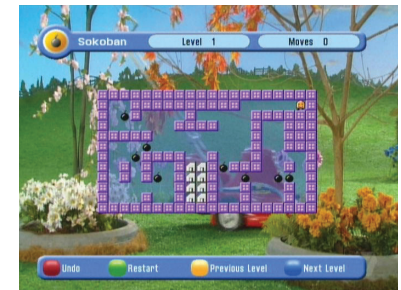
2) Sokoban

In this game you are required to push the balls into their required position. The ball can only be pushed, never pulled and you can only push one ball at a time.

- 1 Press **OK** button on Sokoban to display the menu <Figure 6.5.3>
- 2 Use **CH ▲** and **CH ▼** to select a skill level.
- 3 Press **OK** button on start the game <Figure 6.5.4> or **EXIT** to return to the previous menu.
- 4 Use the cursor keys to move.
- 5 Press RED to undo the previous move. You can only undo one move
- 6 Press the GREEN to restart the game
- 7 Press the YELLOW/BLUE buttons to jump to the previous/next level.
- 8 Press **EXIT** to quit the game



<Figure 6.5.3>



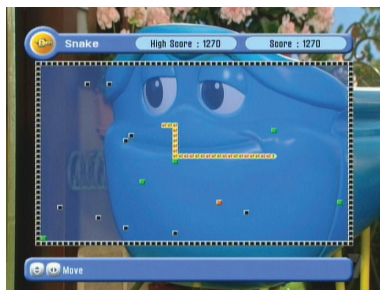
<Figure 6.5.4>

3) Snake

- 1 Press **OK** button on "Snake" to display the menu <Figure 6.5.5>
- 2 Use **CH ▲** and **CH ▼** to select a skill level
- 3 Press **OK** button on start the game <Figure 6.5.6> or **EXIT** to return to the previous menu
- 4 Use the cursor buttons to move.
- 5 Pass through the BLUE icon to increase your score and the length of the snake
- 6 Pass through the RED icon to decrease the length
- 7 Avoid the BLACK icons . If you hit this icon the game ends.
- 8 Press **EXIT** to quit the game.



<Figure 6.5.5>

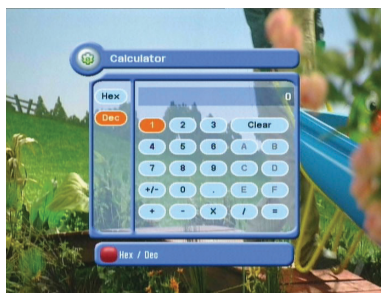


<Figure 6.5.6>

4) Calculator

This feature allows you to use a calculator <Figure 6.5.7>

- Use the Numerical and the arrow buttons on the remote control.



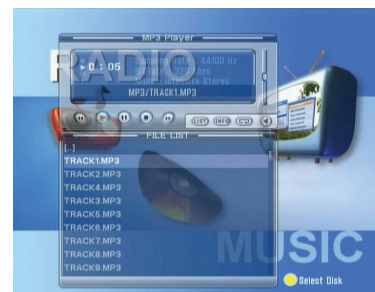
<Figure 6.5.7>

With this feature you can play various Mp3 files, view JPG files or download new software using a USB flash drive

1) MP3 menu

- 1 Select the MP3 file you want to play using the **CH ▲** / **CH ▼**, **OK** in the file list. <Figure 6.6.1>
- 2 Press the **EXIT** button to hide the file list. Select and option using **VOL ▲** / **VOL ▼**, **OK**. <Figure 6.6.2>
- 3 Adjust the volume using **▲** / **▼**.
- 4 Press **OK** button to display the MP3 file list.
- 5 Press the **i** button to display information about the selected MP3 file.

- **FILELIST** : Displays/hides the file list
- **INFO** : Shows information about the selected file
- **YELLOW** : Selects the hard disk or usb device with USB



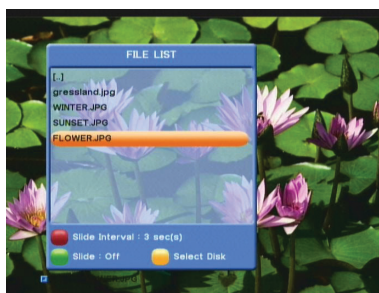
<Figure 6.6.1>



<Figure 6.6.2>

2) JPG menu

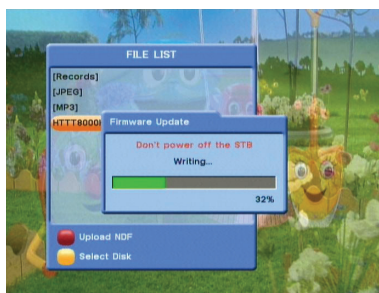
- Press **CH▲** / **CH▼** to select a picture then press **OK** button to display the selected picture <Figure 6.6.3>
 - **RED** : Sets the time interval between slides.
 - **GREEN** : Selects slide show.
 - **YELLOW** : Select the hard disk volume or USB device.
 - **FILELIST** : Shows/Hides the JPEG file list.
 - **BLUE** : Rotates the selected Image



<Figure 6.6.3>

3) Data Transfer menu

- Select the software you want to download by using **CH▲** / **CH▼** in the menu <Figure 6.6.4>
 - Press **OK** button to start the download.
- * **Warning** : do not switch off your receiver before the download is complete.



<Figure 6.6.4>

4) Disk Manager

Use the cursor keys to activate the desired functions from this menu.

- **Default Disk** : If you have additional Storage devices connected to your receiver (i.e. USB HDD, SD Card Reader) you can select which storage device is to be the default drive for playback and recording
 - **Disk Information** : Select the Hard disk volume, USB device or SD Card Reader. Information of the storage devices will be displayed (i.e. used size, total size, free size)
 - **Check Disk** : Checks the status of the selected Storage device.
 - **Format Disk** : Format disk enables you to delete all information stored on the selected storage device
- * **Warning** : If you select Format Disk all data on the storage device will be deleted
- **Testing USB Speed** : Press to test USB speed for DVR.
 - **Timeshift Rec Time** : Set the preferred Timeshift Recording Time. (10Min/30Min/60Min/90min/120min)
 - **Auto Timeshift** : Set Auto Timeshift to On or Off. When set to on unit will automatically begin Timeshift for pre determined time set in the Timeshift Rec Time menu.
 - **Skip Time** : Set the preferred amount of Skip Forward and Back time during playback (30sec/1 Min/2Min/3Min/5Min/10Min20Min/30Min)

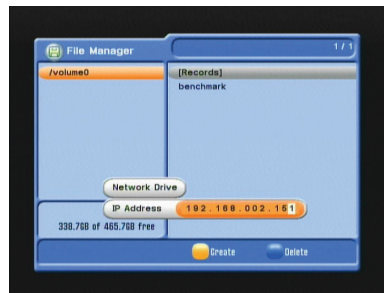


<Figure 6.6.5>

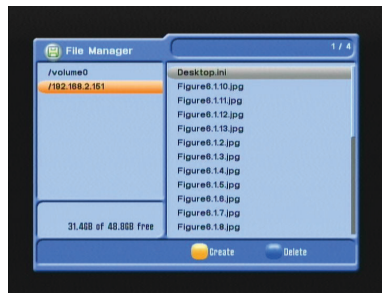
5) File Manager (Transferring Files from your SRT 5495T to a PC)

* Note : Follow instructions in the “Connecting your receiver via LAN to a PC” section on page 25 if you have not already connected a PC to the SRT 5495T

- 1 Press the YELLOW button on the remote control to create a new Network Connection. Use the numeric keys to enter your PC’s IP Address
- 2 Press the **EXIT** button after inputting your IP address to add it into the File Manger section.
- 3 Select/HDD0 by pressing the **OK** button, use the arrow buttons to highlight records on the right hand side menu and press **OK** to view the list of recorded files on the receivers hard drive.

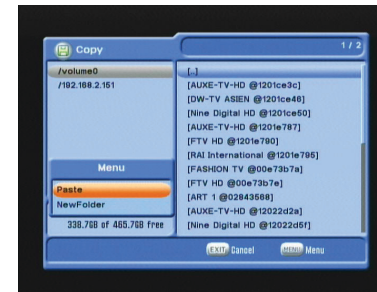


<Figure 6.6.6>

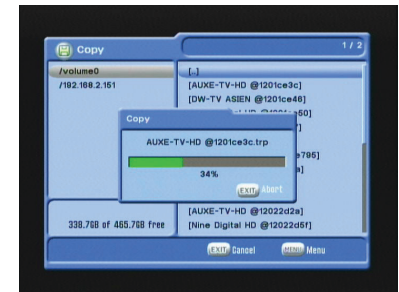


<Figure 6.6.7>

- 4 Press the RED button on the remote control to select the desired files to be transferred.
- 5 Once you have selected the files press the **MENU** button to select the desired function of Move/Copy/New Folder/Delete/Rename by pressing the **OK** button
- 6 Select your created Network drive using the arrow buttons and press the **OK** button
- 7 Press the **MENU** button to transfer the selected files to your Network Drive by selecting Copy, Paste or Move



<Figure 6.6.8>



<Figure 6.6.9>

6) Timer Manager (Manage Existing or Add Manual Timers for Reserving or Recording of Programs)

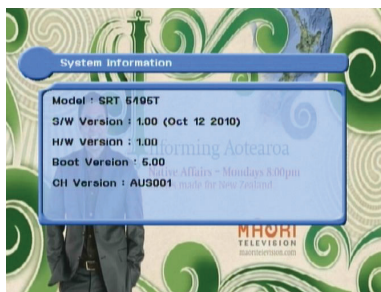
- 1 Press the **OK** button on the desired timer number to access and modify the timers’ parameters
- 2 Press the **CH▲** and **CH▼** arrow buttons to select timer parameters
- 3 Press the **NUM** / **NUM** arrow buttons to change parameters
 - **Timer No** : choose the desired timer using **CH▲** and **CH▼** Arrows buttons (1-32)
 - **State** : Select timer frequency (off/daily/Mon-Fri/Weekly)
 - **Date** : Press the **OK** button to display the calendar and select the desired date
 - **Start Time** : Using the NUMERIC buttons input the required start time
 - **End Time** : Using the Numeric buttons input the required end time
 - **Channel** : Press the **OK** button to display the channel list and select a channel
 - **Record** : Set the record mode (ON/OFF) by using the left and right arrow button
 - **Power Off** : Select Power Off should you wish the receiver to turn to standby after recording has finished <Figure 6.6.13>



<Figure 6.6.13>

6.7 System Information

Your receiver displays current information <Figure 6.7.1> regarding model name, software version and date of manufacture. This info is useful when downloading new software. Please note if you have performed a software update you must also perform a factory reset of the receiver. Please see Database Reset section in the Systems settings menu for instruction on page 23.



<Figure 6.7.1>







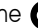


6.8 DVR

1) How to record on your STRONG SRT 5495T Digital Video Recorders internal HDD

There are 3 ways to record TV programs on your STRONG DVR:










- Instant Recording

This method can be used if the program you wish to record is currently showing.

- Switch your DVR to the channel that you wish to record.
- Press the  button on your STRONG remote. The receiver will automatically begin recording.
- Please note that the default record duration is 3 hours. If you wish to change this, press the  button again and a banner will appear where you can set your desired record start and stop duration using the  or  arrows.
- To stop the recording press the  button on the remote control. You will be prompted to confirm that you wish to stop recording. Select Yes and press the  button.
- If you are recording more than one program, select the recording you wish to stop by pressing the  button on that recording. A tick will be placed in the box next to that recording. Once you have selected the recording(s) you wish to stop, press the  button. You will then be prompted to confirm the stop operation. Select Yes using the arrow buttons and press the  key to stop recording.

- EPG (Electronic Program Guide) Recording









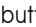







This method can be used if the program you wish to record is on within the next 7 days.

- Press the  button on your Strong remote.
- Use the  or  buttons to highlight the channel for the program you wish to record. Press .
- Use the  button to highlight the program name section of the EPG menu.
- Use the  or  buttons to highlight the program you wish to record.
- Press the  button while this program is highlighted. The selected program will then appear in red.
- Press the  key to return to normal viewing.



This program will automatically be recorded by the STRONG DVR.

- Manual Timer Record














This method can be used to record at specific times.

- Press the  button on your STRONG remote.
- Press the RED coloured key on your STRONG remote.
- Use the  or  buttons to highlight a slot that is "OFF".
- Press  on your STRONG remote to select this timer slot.
- Use the  or  to change the "State" to how often you want the DVR to record at the desired time (Once, Daily, Weekly or Mon-Fri).
- Use the  button to highlight the next option, and the  or  buttons to change the setting for each option.
- If you want the receiver to power off once the recording has finished, in the Power Off section select Yes by pressing the  or  arrow keys
- Once the last option is set and the  button is pressed, you will see "Do you want to save?".
- Use the  or  buttons to highlight Yes and press the  button.
- Press the  key twice to return to normal viewing.






2) Timer Lead In and Lead Out Times

- Lead In and Lead Out Times can be set on your DVR to apply to all Timer recordings. Lead In and Lead Out times add specified amounts of time to the beginning and the end of Timer recordings so you don't miss the beginning or end of recorded programs.
- To set Lead In & Out times press  and select System Settings, then select Time Settings. Then highlight Timer Lead Time and press the  button. This will allow you to set the Lead In & Out times to either 5, 10 or 15 minutes


3) Record on your STRONG SRT 5495T Digital Video Recorder using an external HDD via USB


- You can expand the storage capacity of your STRONG DVR by connecting an external HDD via the front or rear USB ports
- Before connecting the external HDD you will need to format the drive in FAT 32 format. Instructions on how to do this can be found on our website www.strong.com.au in the FAQ section.
- To record to the external HDD you will need to select it in the Menu. Press the  button and using the  and  arrow buttons select Storage by pressing the  button. This will display the Storage Menu. Using the  and  arrow buttons select Disk Manager and press the  button. This will display the Disk Manager Menu. The first item in the list is Default Disk. This will currently be displaying /HDD0 which corresponds to the internal HDD. To set the default disk to your external HDD press the  or  arrow buttons until /USB0 is displayed. This corresponds to your external HDD. Once you have selected /HDD1 press the  button, you will be prompted to save the changes made. Select Yes using the  or  arrow button and press the  button. The default disk is now set to the external HDD
- You can now perform all the recording options listed above using the external HDD
- To set the default HDD back to the internal drive simply remove the external HDD.
- Should you wish to have the external drive permanently connected follow the above instructions to select which HDD to record onto.


4) Playing Recorded TV programs:


- To access any programs you have recorded press the  button on your remote control. The full list of the programs you have recorded will be displayed on the screen.
- To play these programs highlight them by using the  and  arrow buttons and select them by pressing the  button, this will preview the program. To watch the program full screen press the  button again.
- Your recorded program will begin playback

During Playback the Following Options are available



- 

This displays the time- banner showing the progress of the recorded program
- 

This button will pause playback of the program. To resume viewing either press the PAUSE or PLAY button
-  (Fast Forward)

When playing a file you can search through the program by pressing the FF Button. By pressing the FF Button multiple times you can adjust the speed from x2, x4, x8, x16 and x32. To resume normal playback press the PLAY button.
-  (Rewind)

When playing a file you can search back through the program by pressing the RWD Button. By pressing the RWD Button multiple times you can adjust the speed from x2, x4, x8, x16 and x32. To resume normal playback press the PLAY button.
- Slow Motion(1/2x, 1/4x)



While playing back a file you can select slow motion. By pressing the  Button multiple times you can adjust the speed to slow motion 1/2 or 1/4 speeds. To resume normal playback press the  button again.

• Skip FWD & BCK

You can skip forwards or backwards through a file by pressing the SKIP FWD & SKIP BCK buttons.






The default skip time is 30 seconds.

You can adjust the amount of skip time from 30secs, 1Min, 2Min, 3Min, 5Min, 10Min, 20Min and 30Min




To set the desired skip time press , select Storage using the arrow keys and then select Disk Manager by pressing the  button.

Highlight Skip Time. Using the  and  arrow buttons select the desired Skip Time. To store this setting press the  button and select Yes using the  button.






5) Deleting Recorded TV programs:

- To delete a recorded TV program press the  button, when the list of recorded files is displayed select the file you wish to delete by pressing the  or  arrow buttons.
- Press the BLUE button to enter delete mode. Now press the  button and a "X" will be placed next to the file you have selected to delete. (You can select more than one program at a time to delete)
- Press the BLUE button again to delete the file. You will be then prompted to confirm the deletion of file(s). To confirm deletion select Yes and press the  button.

6) Lock Recorded TV programs:

- To protect a recorded program from accidental deletion or to restrict the viewing of recorded programs to specific audience, programs can be locked.
- To Lock a program press the  button to display the recorded programs
- Press the **GREEN** button, you will be prompted to enter your PIN (the default PIN is "0000"), this will put the receiver into File Lock Mode. (To set your own personal PIN number for the receiver please refer to the Security Settings, Parental Lock Section in this manual on page 23.
- Select the recorded program you wish to lock use the arrow buttons and press the  button. A padlock will appear next to the selected file. This file is now locked.
- To return to normal mode either press the  button or the RED button
- Once a recorded file has been locked you will be required to enter the PIN number to view or delete this program




7) Rename Recorded TV programs:

- Recorded programs can be renamed once recording is complete
- To Rename programs press the  button to display the recorded programs
- Select the recorded program you wish to rename by using the arrow keys and press the **Yellow** button
- The file name will be highlighted. Now press the  button to bring up a virtual key board.
- Using the arrow keys select the desired letters to make up the new file name and press the  button
- Once you have completed the new file name press the  button. You will be prompted to save the changes, select Yes and press  to save

8) Bookmarking Recorded Programs

- The **SRT 5495T** will set auto bookmarks to each recorded program. Once a recorded program has been viewed, a bookmark will be set at the position playback was stopped. If the recorded program is watched in full a bookmark position will not be set. If selected to be viewed again playback will begin at the beginning of the program.
- When the program is re selected for playback it will resume from the last viewed position.
- You can also set manual bookmarks during playback of recordings-
- During playback press the **RED** button, a red triangle will appear on the playback progress bar indicating the bookmarked position. You can set multiple bookmarks in a program. (Maximum 20)
- Press the **GREEN** button and the current position will jump to the first bookmarked position and commence playback from this point.
- Press the **YELLOW** button and the current position will jump to the next bookmarked position and commence playback from this point.
- To delete the bookmarks press the **RED** button again and the red triangle will be removed. This needs to be performed for each bookmark

9) Editing Recorded Programs**- File Cut Feature**

- The SRT 5495T allows you to cut sections out of recorded programs.
- While playing back a recorded program press the  button twice. A menu will appear at the bottom of the screen.
- Press the Blue key will place the unit into the File Edit mode.
- Pressing  will input the start position of the file to be cut or copied.
- A small window will be displayed in the top left hand corner showing the time and frame of when the cut was started. You can now fast forward or skip to the desired position you wish cut or copy.
- Press the  button to mark the end of the section to be cut or copied. You will then be asked whether you wish to Cut or Copy.
- By selecting Cut the selected portion will be deleted. Selecting Copy, copies this portion into a separate file in the File List.
- This file will be listed by the same name as the original file but will have E and digit in front of the name (e.g. E2-ONE HD)

10) Time Shift (Pause & Rewind Live TV)

- Timeshift allows you to Pause and Rewind Live TV. Timeshift can be set to Automatic or manual and can be activated as required
- To set TimeShift to Automatic press **MENU** and select Storage, then select Disk Manager using the arrow buttons. Here you can set the AutoTimeshift function to ON or OFF.
- With Auto Timeshift set to ON your DVR will allow you to Pause or Rewind the current channel you have been viewing for a pre determined time. The default Timeshift time is 60 minutes. You can adjust this time in the same Disk Manager menu under Timeshift Record Time. The options are 10min, 30min, 60min, 90min and 120min
- To activate Timeshift manually press the **II** button on the remote control.
- This will pause the currently viewed program and allow you to resume watching from this point by pressing the **▶** button.
- Your DVR will record the program to a buffer for the default time you have set in the menu
- Please note that if you have Auto Timeshift on it will reset every time you change the channel

Playing Media Files On Your SRT 5495T:

- The SRT 5495T is compatible with most PC type media files
- These files can be played back on your receiver via the USB ports or SD Card Reader
- To Playback media files, firstly connect the storage device where files are stored
- Then press the **MEDIA** button on the remote control, this will bring up the list of connected storage devices. Select the desired storage device by pressing the **OK** button
- The list of files on the storage device will now be displayed on the screen. Select the file by pressing the **CH▲** or **CH▼** **arrow buttons** and to play press the **OK** button. If the file is supported playback will begin. If the file is not supported you will be returned to the Media file list
- To stop playback press the **■** button, this will bring you back to the list of files on your storage device
- Please note as there are many variations of file types and various audio codecs within certain file types, all media files may not be supported

6.10 PIP Function(Picture in Picture)



- PIP is the feature where one program (channel) is displayed on the main screen at the same time as another program (channel) is displayed in a smaller inset window
- To activate the PIP function press the **PIP** button
- This will bring a up Sub Channel List. From this list select the channel you wish to be displayed in the PIP window by pressing the **OK** button. Press the **OK** button again to remove the Sub Channel List
- To change the channel displayed in the PIP window press the **PIP+** button to change the channel up, or press the **PIP-** button to change the channel down.
- To decrease the size of the PIP window press the **PIP** button
- To remove the PIP window (if window is at largest size) press the **PIP** button twice
- To remove the PIP window (if window is at the reduced size) press the **PIP** key once
- To switch between the main channel and the PIP channel press the **PIP Swap** button

Troubleshooting

There may be various reasons for the abnormal operation of the unit. Therefore, if the unit does not work properly, check it according to the procedures shown in the table below:

Problem	Possible causes	Remedy
The LED light on the front panel does not light	The AC power cord is disconnected.	Connect the power cord properly into the power socket.
No Picture or sound.	Wrong connection of the video/audio output to the TV input terminal. Wrong connection of the terrestrial cable. No signal or weak signal. Wrong setting of channel information in the MENU screen.	Connect the two terminals correctly with RCA or RF cable(s), HDMI cable(s). Connect the antenna cable correctly. Adjust the direction of the antenna. Check the cable connections Type the setting values correctly.
Black-and-white screen or V-Hold.	Your TV mode (PAL/NTSC) is different from the terrestrial broadcasting mode.	Use a TV of the same mode. Connect a NTSC/PAL converter between the receiver and the TV.
The remote controller is not working.	Batteries are exhausted. Fluorescent light is interfering with the remote controller. Remote controller is incorrectly aimed.	Change the batteries. Switch off the light. Aim the remote control at the receiver.
Unit will not operate.	No Power or Switched off.	Check mains supply and ensure that the unit is witched on both at the mains and at the power switch on the rear of the receiver.

Specifications

System capabilities	Fully DVB compliant	
TERRESTRIAL System capabilities	Input connector	IEC 169-2, Female
Tuner & Channel Decoder	Loop-through out	IEC 169-2, Male
	Frequency range	170 ~ 230 MHz, 470 ~ 862MHz
	Input impedance	75 Ohms Nominal
	Signal level	7,8MHz(-78dBm~-25dBm) switchable by software
	IF Bandwidth	7,8MHz(-3dB) switchable by software
	Waveform	OFDM
	Carrier Mode	2k and 8k hierarchical/non-hierarchical
	Code Rate	1/2, 2/3, 3/4, 5/6, 7/8
	Guard Interval	1/4, 1/8, 1/16, 1/32
System resource	Processor	32bit processor (450MHz)
	DDR SDRAM	128Mbyte X 2
	FLASH	8Mbyte
	EEPROM	256Kbit
Video decoder	MPEG 2	MPEG-2, MPEG-4, H.264
	Data Rate	up to 15M bits/s
	Resolution	1920 X 1080P/i, 1280 X 720P, 720 X 576P/i
	Video format	PAL
	Aspec Ratio	4:3,16:9
Teletext	DVB compliant	
MPEG Audio	MPEG 1 layer I/II, MPEG 2 layer II, AC3 Dolby Digital	
	Type	Mono, Stereo, Joint Stereo
	Sampling rates	32, 44.1 and 48 KHz
MPEG2 Video encoder	Video Input	1x CVBS , 1x Component (YCbCr)
	Support Video resolution	480i,576i Only
	Audio input	1x Audio R/L
	Video Encoding method	Compliant to ISO/IEC13818-2 (MPEG2 video)MP@ML and ISO/IEC11172-2 (MPEG1 video)
	Audio Encoding method	ISO/IEC11172-3 (MPEG1 audio) layer 1/2-compliant
	Audio Sampling frequency	48KHz

Serial data interface	Connector	9pin D-sub male, Max 115K bps
Remote control	Code	NEC-IR
	Operating condition	up to 7 Meter
SD card reader	Support SD spec	up to ver. 2.0(SDHC)
USB	USB Supply	DC 5V Max 500mA
Terrestrial ant input	Antenna Supply	DC 5V Max 100mA
Power supply	Power consumption	max 50W
	Passive standby	<1W(Compliance with MEPS)
	Supply voltage	100V ~ 250V
	Supply frequency	50Hz ~ 60Hz
Rear Panel connectors	Video	1 X RCA cinch
	Audio L/R	2 X RCA cinch
	Component(Y/Pb/Pr)	3 X RCA cinch
	Video IN	1 X RCA cinch
	Audio IN	2 X RCA cinch
	Componet(Y/Cb/Cr) IN	3 X RCA cinch
	Serial data	9pin D-sub IEC 169 - 24 IEC 169 - 24
	Terrestrial ant input	IEC 169 - 2
	Terrestrial ant output	IEC 169 - 2
	S/PDIF	Fiber Optic
	HDMI	Digital Video/Audio Output
	USB	USB A-type
	S-VIDEO	MINI-DIN
	LAN	RJ-45

Physical Specification	Size (W X H X D)	335 X 58.5 X 247(mm)
	Weight (Net)	3 Kg



Disposal of Old Electrical & Electronic Equipment(Applicable in the European Union and other European Countries with separate collection systems)

This symbol on the product or on its packaging indicates that this product shall not be treated as household waste. Instead it shall be handed over to the applicable collection point for the recycling of electrical and electronic equipment. By ensuring this product is disposed of correctly, you will help prevent potential negative consequences for the environment and human health, which could otherwise be caused by inappropriate waste handling of this product. The recycling of materials will help to conserve natural resources.

For more detailed information about recycling of this product, please contact your local city office, your household waste disposal service or the shop where you purchased the product.



STRONG Australia Pty Ltd.

60 WEDGEWOOD ROAD, HALLAM, VICTORIA 3803

PH: +61 3 8795 7990 **FAX:** +61 3 8795 7991

TECHNICAL SUPPORT: 1 800 820 030

STRONG & CO. (FAR EAST), LTD.

P. O. BOX 85, YOKOHAMA, KANAGAWA-KEN

JAPAN 231-91 **FAX:** +81 45 651 1842

www.strong.com.au

tech@strong.com.au